

## Part Number: PTR03-18222

## Kit Contents

Item #	Quantity Req'd.	Description
1	1	Performance Air Filter
2	1	Customer Care Label
3		

## Hardware Bag Contents

Item #	Quantity Req'd.	Description
2		
3		

## Additional Items Required For Installation

Item #	Quantity Req'd.	Description
1		
2		
3		

## Conflicts

None
------

## Recommended Tools

Personal & Vehicle Protection	Notes
Blanket and Lint Free Cloth	
Special Tools	Notes
Installation Tools	Notes
Special Chemicals	Notes
VDC approved cleaner	Prep Solvent 70 or similar

## General Applicability

MY22 and newer GR 86 models
-----------------------------

## Recommended Sequence of Application

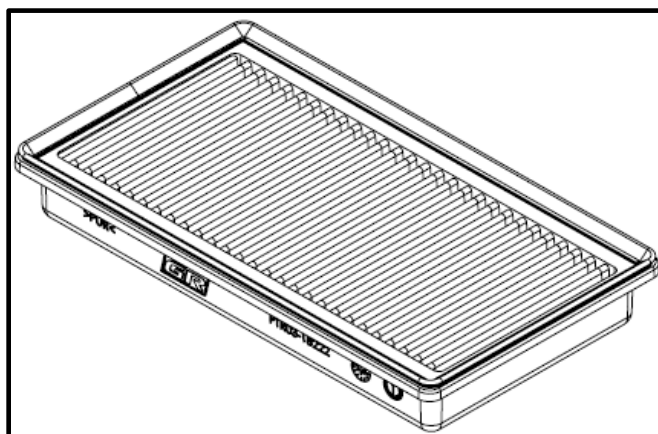
Item #	Accessory
1	
2	
3	

\*Mandatory

## Vehicle Service Parts (may be required for reassembly)

Item #	Quantity Req'd.	Description
1	1	Cleaning Kit, Performance Air Filter (PTR03-00088)
2		
3		

## Legend

**STOP:** Damage to the vehicle may occur. Do not proceed until process has been complied with.**OPERATOR SAFETY:** Use caution to avoid risk of injury.**CAUTION:** A process that must be carefully observed in order to reduce the risk of damage to the accessory/vehicle and to ensure a quality installation.**TOOLS & EQUIPMENT:** Used in Figures calls out the specific tools and equipment recommended for this process.**REVISION MARK:** This mark highlights a change in installation with respect to previous issue.**SAFETY TORQUE:** This mark indicates that torque is related to safety.

Procedure

Care must be taken when installing this accessory to ensure damage does not occur to the vehicle. The installation of this accessory should follow approved guidelines to ensure a quality installation.

These guidelines can be found in the "Accessory Installation Practices" document.

This document covers such items as:-


- Vehicle Protection (use of covers and blankets, cleaning chemicals, etc.).
- Safety (eye protection, rechecking torque procedure, etc.).
- Vehicle Disassembly/Reassembly (panel removal, part storage, etc.).
- Electrical Component Disassembly/Reassembly (battery disconnection, connector removal, etc.).

Please see your Toyota dealer for a copy of this document.

### 1. Check the Kit Contents.

- (a) Check the filter panel for damage to the wire mesh.
- (b) Ensure a Customer Care sticker is present (if provided), see Fig 5-1.

### 2. Protect the Vehicle.

-  (a) Place vehicle protection over the front bumper.
- (b) Unlatch the two air filter lid clips (Fig. 2-1).
  - (c) Lift and pull filter lid off.

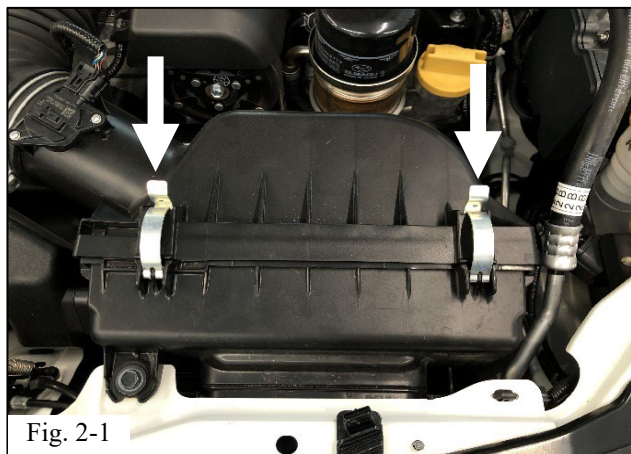


Fig. 2-1

### 3. Remove the OE Air Filter.

- (a) Remove the OE Filter and discard it (Fig. 3-1).



Fig. 3-1

#### 4. Install the TRD Air Filter.

(a) Place the TRD Air Filter in the filter housing (Fig. 4-1).

(b) Replace the filter housing lid (Fig. 4-1).

**⚠ NOTE:** Be careful to not damage the wire mesh of the air filter.

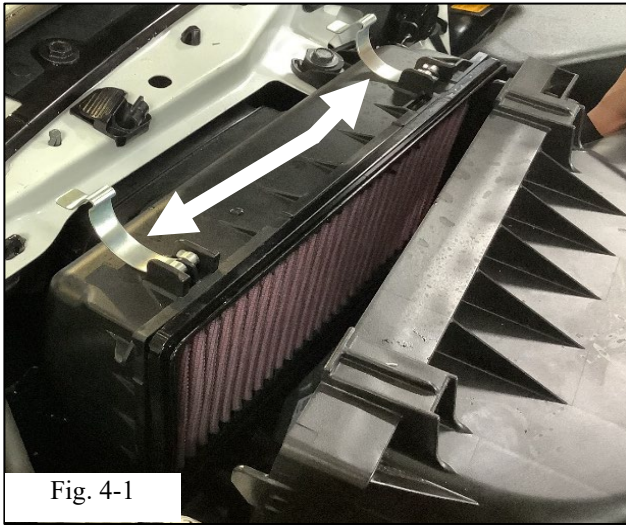


Fig. 4-1

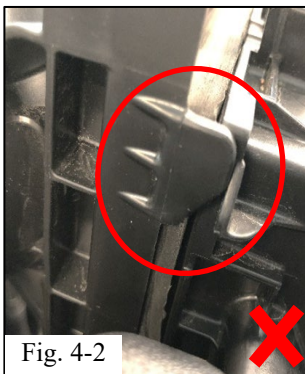


Fig. 4-2

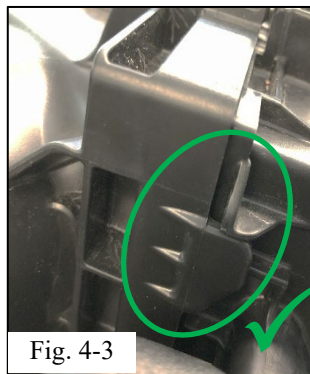


Fig. 4-3

**⚠** (c) Seat filter housing lid tabs under filter housing tabs to ensure seal (Fig. 4-2, Fig. 4-3)

**⚠** (d) Engage the two filter lid clips (Fig. 4-1).

#### 5. Install the Customer Care Label (If Provided).

(a) Clean the filter housing lid with a lint free cloth and VDC approved cleaner.

(b) Wipe the filter housing lid with a water-dampened lint free cloth and dry it with a dry lint free cloth.

(c) Place the Customer Care Label on the filter housing lid as shown. Center it with the ribs on the filter housing (Fig. 5-1).

(d) Remove the vehicle protection.



Fig. 5-1



<u>Check:</u>	<u>Look For:</u>
<u>Accessory Function Checks</u>  <input type="checkbox"/> Air filter  <input type="checkbox"/>  <input type="checkbox"/>  <input type="checkbox"/>	  Filter is firmly seated
<u>Vehicle Function Checks</u>  <input type="checkbox"/> Malfunction indicator light  <input type="checkbox"/>  <input type="checkbox"/>	  Any gaps between the housing & lid
<u>Vehicle Appearance Check</u>  <input type="checkbox"/> After accessory installation and removal of protective cover(s), perform a visual inspection.	  Ensure no damage (including scuffs and scratches) was caused during the installation process. (For PPO installations, refer to TMNA Accessory Quality Shipping Standard.)