

Part Number: PTR01-21051

Kit Contents

Item #	Quantity Req'd.	Description
1	1	Dipstick Tube, Pre-Formed Automatic Transmission.
2	1	Spacer, Small Stainless Steel Transmission Mounting
3	1	Spacer, Large Stainless Steel Transmission Mounting
4	1	Installation Instructions

Hardware Bag Contents

Item #	Quantity Req'd.	Description

Additional Items Required For Installation

Item #	Quantity Req'd.	Description
1	1	tC Supercharger Main Kit P/N PTR01-21050-90

Note: TRD Data Transfer Device, Diagnostic Tester Kits, CAN Interface Modules, Program Cards, or other SSTs may be ordered by calling SPX/OTC at **1-800-933-8335**

Conflicts

Note: NOT used on Manual Transmission models.

Recommended Tools

Personal & Vehicle Protection	Notes
Vehicle Protection	Seat/Floor Covers
Safety Glasses	
Special Tools REQUIRED	Notes
TRD Data Transfer Device	P/N 00002-17620
Toyota Diagnostic Tester Kit	P/N TOY220036
12 MB Program Card w/ version 13.3 Software (or later)	P/N 01002593-005
CAN Interface Module Kit	P/N 01002744
TIS Workstation	P/N 00002-TIS01-01-A
Midtronics Battery Tester	P/N 00002-MP815-T
Automotive Battery Charger	As needed
Installation Tools	Notes
Torque Wrench	0 - 150 ft-lbf (0 - 203 N-m)
10 mm socket	For dipstick tube fastener

NOTE: Part number of this accessory may not be the same as the part number shown

Special Chemicals	Notes

General Applicability

Model Year 2005-2006 Automatic Transmission SCION tC Vehicles equipped with TRD Supercharger.

Recommended Sequence of Application

Item #	Accessory
1	TRD tC Supercharger installation *
2	TRD SC Map installation *
3	ECU Reflash via TIS w TRD AT Map *

*Mandatory

Vehicle Service Parts (may be required for reassembly)

Item #	Quantity Req'd.	Description
1		

Legend



STOP: Damage to the vehicle may occur. Do not proceed until process has been complied with.



OPERATOR SAFETY: Use caution to avoid risk of injury.



CAUTION: A process that must be carefully observed in order to reduce the risk of damage to the accessory/vehicle and to ensure a quality installation.



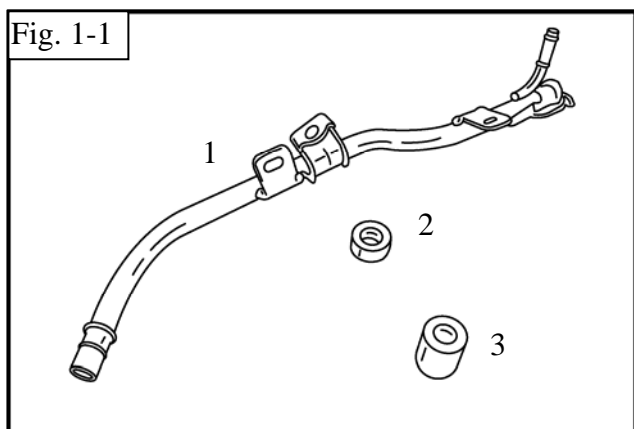
TOOLS & EQUIPMENT: Used in Figures calls out the specific tools and equipment recommended for this process.



REVISION MARK: This mark highlights a change in installation with respect to previous issue.

Kit Contents

Fig. 1-1



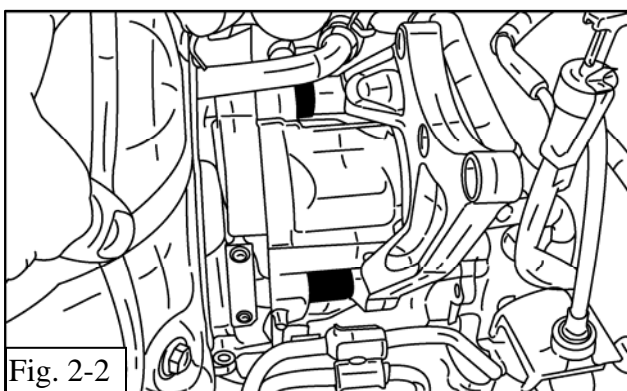
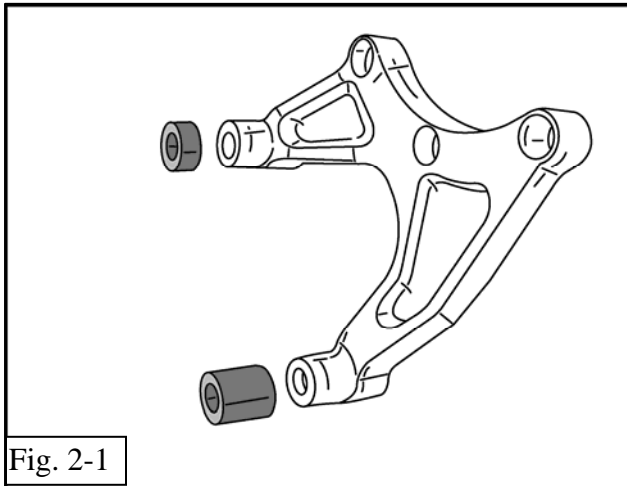
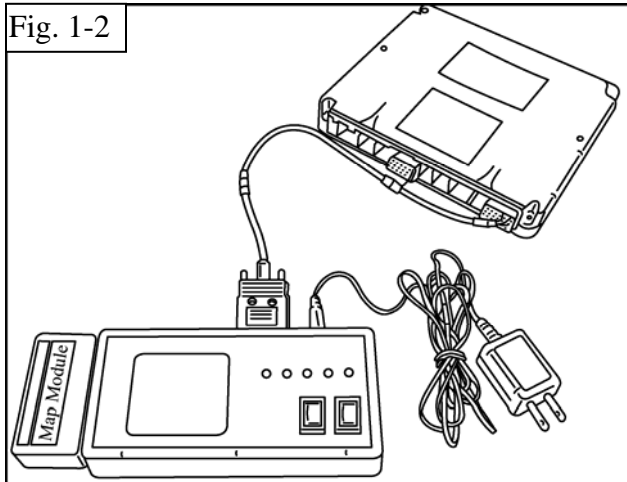
Care must be taken when installing this accessory to ensure damage does not occur to the vehicle. The installation of this accessory should follow approved guidelines to ensure a quality installation.

These guidelines can be found in the "Accessory Installation Practices" document.

This document covers such items as:-

- Vehicle Protection (use of covers and blankets, cleaning chemicals, etc.).
- Safety (eye protection, rechecking torque procedure, etc.).
- Vehicle Disassembly/Reassembly (panel removal, part storage, etc.).
- Electrical Component Disassembly/Reassembly (battery disconnection, connector removal, etc.).

Please see your Toyota dealer for a copy of this document.



10 mm Wrench



1. Installation review and vehicle preparation.

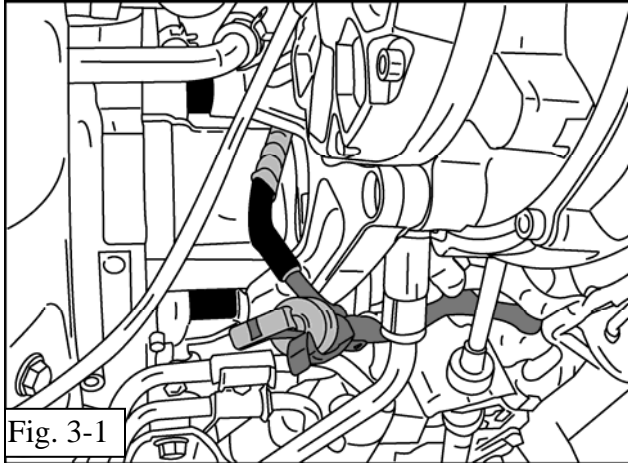
- (a) Review entire installation instructions provided with this supercharger kit BEFORE beginning the installation. **NOTE: You MUST have a TRD Data Transfer Device (Fig 1-2) SST 00002-17620 in order to complete the installation.** This SST can be ordered from SPX. <http://toyota.spx.com> 1-800-933-8335

- (b) Review kit contents (Fig.1-1) to ensure that all parts are present BEFORE beginning the installation. If any items are missing contact Technical Support at (800) 688-5912 before proceeding. **IMPORTANT:** Check the TIS website for the most up-to-date revision of these instructions. Print out the newest instructions whenever possible.

2. Mounting Bracket Spacer Installation

- (a) At the appropriate step during the supercharger installation, install supercharger transmission bracket SPACERS as seen in Fig 2-1 & Fig. 2-2.
- (b) Ensure that Small Spacer is on top and that the Large Spacer is on the bottom. Fig 2-1 & Fig. 2-2.





3. Transmission Dipstick Tube Removal & Installation.



(a) Carefully remove OE Transmission Dipstick and Transmission Dipstick Tube. (Fig. 2-2)

(b) Replace using TRD supplied pre-formed Transmission Dipstick Tube. Fig 3-1. Replace retaining bolt.

Torque to 9.0 ft-lbf (12.0 N-m).



(c) Reinstall OE breather hose to top of TRD Transmission Dipstick Tube. Route breather hose as shown in Fig. 3-1.

(d) Reinstall OE Transmission Dipstick. (Fig. 3-1)

4. TIS Calibration Update Installation.

(a) On the TIS website, be sure to review **TSB No. SS002-01** "ECU Flash Reprogramming Process".

(b) After completing the main supercharger installation instructions, download ECM Calibration Update from TIS and download to the Toyota Diagnostic Tester Tool using the TIS Calibration Update Wizard.

(c) Follow Standard Toyota instruction for re-flashing the ECM.



(d) NOTE: Vehicle will NOT operate properly without this update.



(e) This operation **MUST** be performed AFTER TRD data transfer is complete. The TIS update will NOT load into the ECM without the module data installed first. NOTE: The calibration for this vehicle is a two part calibration. The first part is supplied in the main supercharger kit and must be loaded into the ECM using the TRD Data Transfer Device **FIRST**.

- (f) The Second part must be obtained through TIS and loaded into the ECM using the Toyota Diagnostic Tester (a.k.a. Scan Tool) P/N TYO22036. Follow the instructions supplied by TIS for
“ECU Flash Reprogramming”
under the **“Diagnostics”** tab.



- (g) **VERY IMPORTANT:** Errors during the flash reprogramming process can permanently damage the vehicle ECU. Minimize the risks by following the steps below.



- (h) **Battery voltage MUST NOT FALL BELOW 11.4 volts** during reprogramming.



- (i) To ensure stable battery voltage, a battery charger may be connected during reprogramming if:



Voltage does not fall below **11.4** volts.
Voltage does not rise above **16.0** volts.
Setting is on **SLOW** charge and not **BOOST**.

- (j) The TIS calibration update will NOT load into the ECM without the module calibration loaded first.
- (k) Both calibration files must be loaded into the ECM. Operating the vehicle with only the module calibration will compromise performance.

Transmission	VDS	Current Calibration ID	New Calibration ID
AT	DE1#7	3YW20200	3YW20201

Checklist - these points **MUST** be checked to ensure a quality installation.

Check:☐

Vehicle Battery Voltage

☐

Inspect Spacers

☐

Transmission Dipstick Tube

☐

ECM Part Number Decal

☐

ECM Map Module

☐

Testing

Look For:

Ensure Vehicle Battery is fully charged before & during the ECM re-flash process.

Ensure spacers are in their proper location and that the bracket fits properly between the bell-housing and the supercharger.

Ensure that the transmission dipstick tube is properly installed and that there are no leaks after vehicle is started and / or driven after test drive.

Ensure TRD ECM Part Number decal for Automatic Transmission Map is installed onto OE ECM. Do not cover OE ECM label.

Ensure the ECM Map module is placed into vehicle glove box at completion of supercharger installation.

Ensure Vehicle runs properly after installation and there are no DTC codes. Recheck oil and coolant levels after drive test. Recheck serpentine drive belt alignment.