

Part Number: PT948-00220

Kit Contents

Item #	Quantity Reqd.	Description
1	1	LED Trunk Bulb

Hardware Bag Contents

Item #	Quantity Reqd.	Description

Additional Items Required For Installation

Item #	Quantity Reqd.	Description
1		

Conflicts

None

Recommended Tools

Personal & Vehicle Protection	Notes
Safety Glasses/Gloves	Required
Installation Tools	Notes
Nylon Removal Tool	
BOJO Sealant Smoothing Tool	P/N: SST2-162-163-XNGL

General Applicability

MY21 and newer Camry and Avalon models

Recommended Sequence of Application

Item #	Accessory

*Mandatory

Vehicle Service Parts (may be required for reassembly)

Item #	Quantity Reqd.	Description
1		
2		
3		

Legend



STOP: Damage to the vehicle may occur. Do not proceed until process has been complied with.



OPERATOR SAFETY: Use caution to avoid risk of injury.



CAUTION: A process that must be carefully observed in order to reduce the risk of damage to the accessory/vehicle and to ensure a quality installation.



TOOLS & EQUIPMENT: Used in Figures calls out the specific tools and equipment recommended for this process.



REVISION MARK: This mark highlights a change in installation with respect to previous issue.



SAFETY TORQUE: This mark indicates that torque is related to safety.



REGULATORY MARK: This mark indicates the component is related to regulatory compliance



Care must be taken when installing this accessory to ensure damage does not occur to the vehicle. The installation of this accessory should follow approved guidelines to ensure a quality installation.

These guidelines can be found in the "Accessory Installation Practices" document.

This document covers such items as:-

- Vehicle Protection (use of covers and blankets, cleaning chemicals, etc.).
- Safety (eye protection, rechecking torque procedure, etc.).
- Vehicle Disassembly/Reassembly (panel removal, part storage, etc.).
- Electrical Component Disassembly/Reassembly (battery disconnection, connector removal, etc.).

Please see your Toyota dealer for a copy of this document.

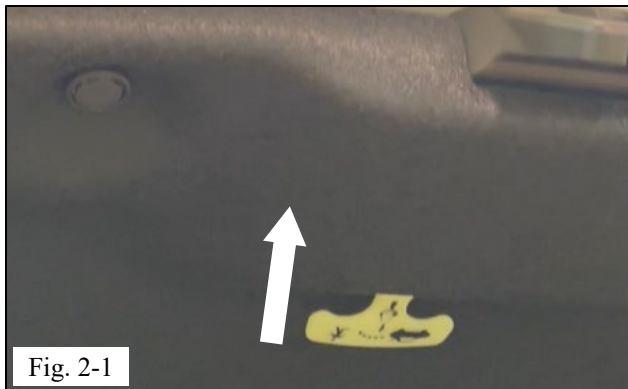


1. Open the Trunk

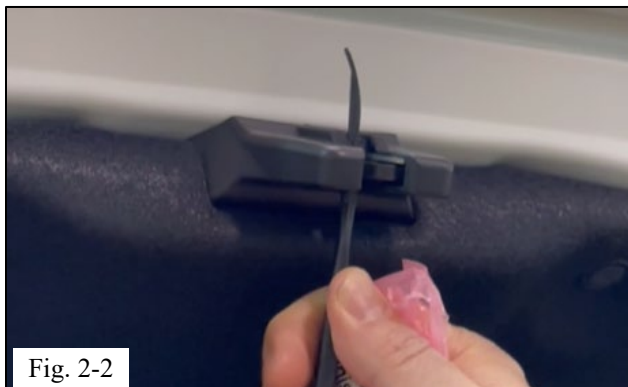
- (a) Press and hold the trunk release button from within the vehicle cabin (Fig. 1-1).

2. Turn Off Trunk Light

- (a) Push up trunk release lever located on inside of trunk lid (Fig. 2-1).



- (b) Insert the Sealant Smoothing tool perpendicular to the trunk latch until it triggers the trunk simulating a closed condition (Fig. 2-2).



3. Disassemble and Uninstall Vehicle Bulb

(a) Locate the trunk light (Fig. 3-1).



Fig. 3-1

(b) Using a nylon removal tool, depress the locking tab retaining the light in the vehicle (Fig. 3-2).

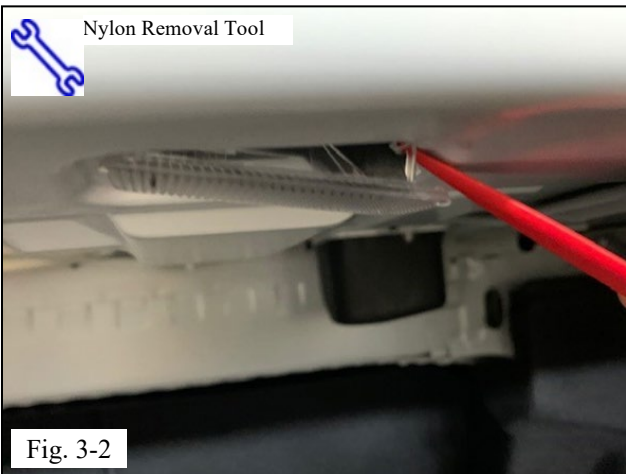


Fig. 3-2

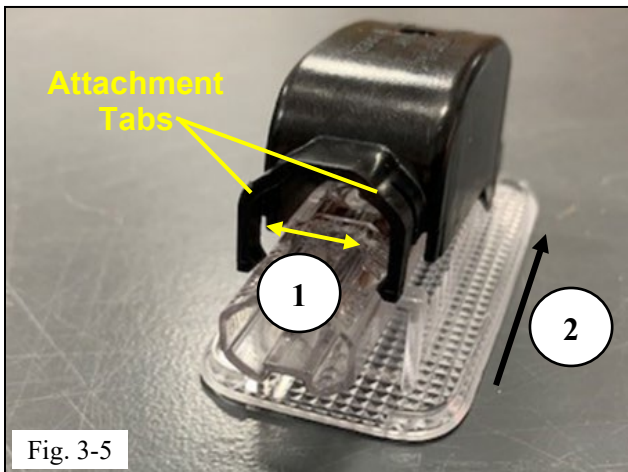
(c) Remove factory trunk light housing (Fig. 3-3).



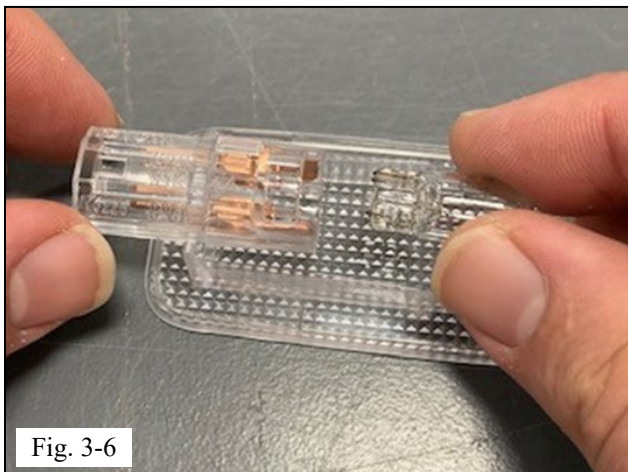
Fig. 3-3



- (d) Depress the locking tab on wire harness connector to disconnect trunk light housing from wire harness (Fig. 3-4).



- (e) Locate the attachment tabs on the back shell of the trunk light housing (Fig. 3-5).
- (1) Using slight pressure, carefully pry the attachment tabs outwards.
 - (2) Gently pry the back shell away from the trunk light housing.



- (f) Hold the light carefully and firmly, then use an outward motion to pull the bulb from the socket (Fig. 3-6).
- (g) Discard the removed bulb.

4. Install LED Bulb

- (a) Insert the LED bulb into the trunk light socket using a straight, inward motion (Fig. 4-1).

⚠ NOTE: Ensure the bulb is correctly oriented such that the LED diodes are facing the trunk light lens (Fig. 4-2).

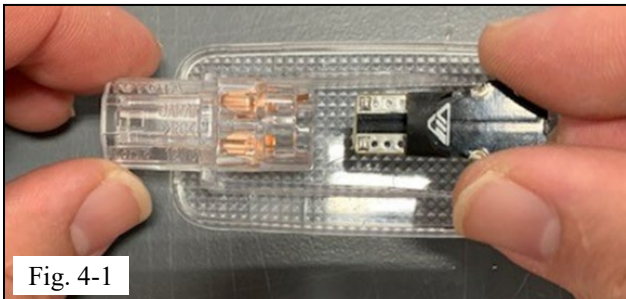


Fig. 4-1

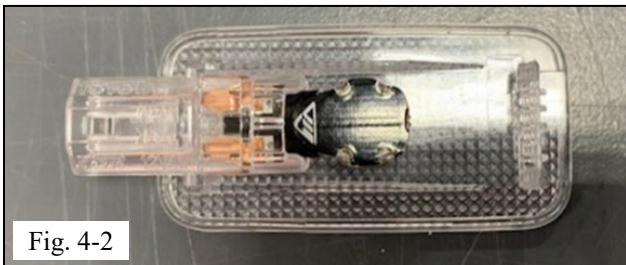


Fig. 4-2

- (b) Reinstall the trunk light back shell by inserting the locking tabs into lens (Fig. 4-3).

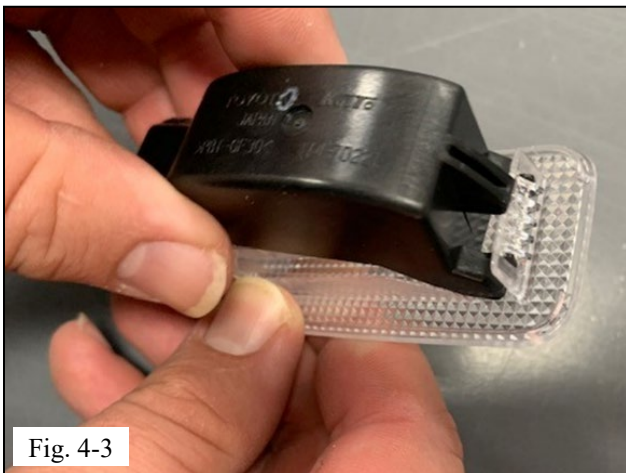


Fig. 4-3

- (c) Press down to fully seat the back shell (Fig 4-4).

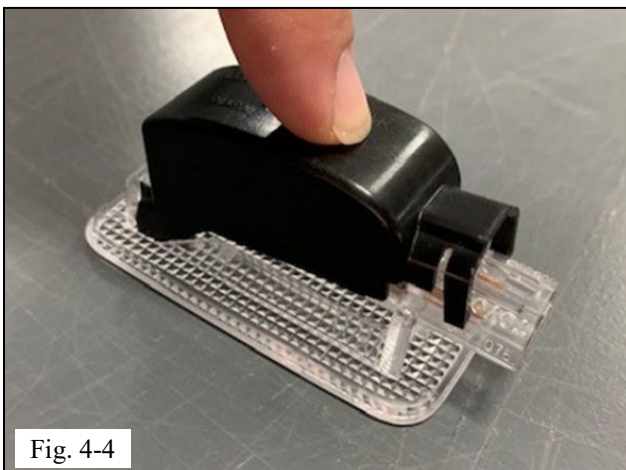


Fig. 4-4



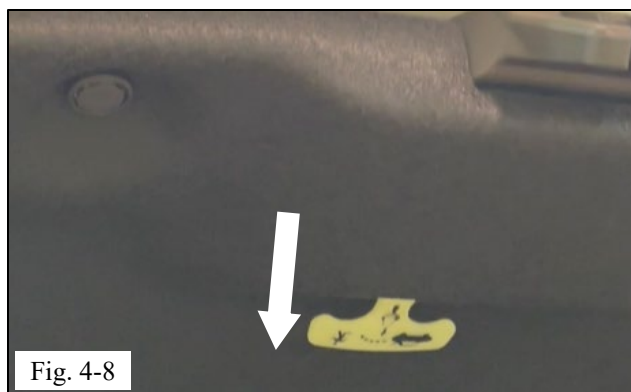
- (d) Attach wire harness to trunk light assembly as shown. An audible click will be heard which will indicate harness is fully seated in place (Fig. 4-5).



- (e) Insert the trunk light assembly into the housing cutout in the trunk (Fig. 4-6).



- (f) Press the trunk light assembly into until the tab locks the assembly into place (Fig. 4-7).



- (g) Pull down on trunk release lever located on inside of trunk lid (Fig. 4-8).
- (h) Complete Accessory Function Check.

TOYOTA AVALON, CAMRY 2021 - TRUNK LIGHT LED BULB

Checklist - these points **MUST** be checked to ensure a quality installation.

Check:	Look For:
<u>Accessory Function Checks</u>	
<input type="checkbox"/> Trunk is OPEN	Trunk light illuminates
<u>Vehicle Function Checks</u>	
<u>Vehicle Appearance Check</u>	
<input type="checkbox"/> After accessory installation and removal of protective cover(s), perform a visual inspection.	Ensure no damage (including scuffs and scratches) was caused during the installation process. (For PPO installations, refer to TMNA Accessory Quality Shipping Standard.)