

Preparation

Part Number: PT936-18220-XX**Kit Contents**

Item #	Quantity Req'd.	Description
1	1	Front Driver Door Guard (Reference Pink Sticker)
2	1	Front Passenger Door Guard (Reference Blue Sticker)

Hardware Bag Contents

Item #	Quantity Req'd.	Description
1	N/A	

Additional Items Required for Installation

Item #	Quantity Req'd.	Description
1	A/R	VDC Approved Cleaner; if possible, Minimum 70% Isopropyl Alcohol
2	A/R	Disposable Shop towels (i.e. Scott towels)
3	A/R	Blue painter's masking tape
4	1	Scissors

Conflicts

None

Recommended Tools

Personal & Vehicle Protection	Notes
None	
Special Tools	Notes
PPO Magnetic Template	IADS p/n = 8622-0004
Sealant Adjustment Tool	IADS p/n = HIG11-D5-04
DIO Paper Door Templates	See last 2 pages of these instructions (Letter Size)
Nylon Removal Tool (NRT)	SST p/n = 00002-06002-01
Installation Tools	Notes
12-oz. rubber mallet	IADS p/n = PRI10-D5-02 Vaughn, p/n = SF12
Special Chemicals	Notes
Minimum 70% Isopropyl Alcohol	

General Applicability

MY22 and newer 86 models

Recommended Sequence of Application

Item #	Accessory
1	Body Side Molding
2	Door Edge Guard

*Mandatory

Vehicle Service Parts (may be required for reassembly)

Item #	Quantity Req'd.	Description
1		
2		
3		

Legend**STOP:** Damage to the vehicle may occur. Do not proceed until process has been complied with.**OPERATOR SAFETY:** Use caution to avoid risk of injury.**CAUTION:** A process that must be carefully observed in order to reduce the risk of damage to the accessory/vehicle and to ensure a quality installation.**TOOLS & EQUIPMENT:** Used in Figures calls out the specific tools and equipment recommended for this process.**REVISION MARK:** This mark highlights a change in installation with respect to previous issue.**SAFETY TORQUE:** This mark indicates that torque is related to safety.

Care must be taken when installing this accessory to ensure damage does not occur to the vehicle. The installation of this accessory should follow approved guidelines to ensure a quality installation.

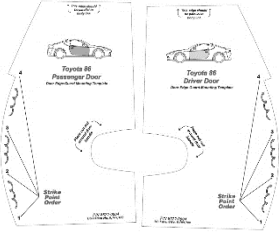



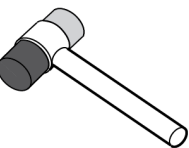



These guidelines can be found in the "Accessory Installation Practices" document.

This document covers such items as: -


- Vehicle Protection (use of covers and blankets, cleaning chemicals, etc.).
- Safety (eye protection, rechecking torque procedure, etc.).
- Vehicle Disassembly/Reassembly (panel removal, part storage, etc.).
- Electrical Component Disassembly/Reassembly (battery disconnection, connector removal, etc.).

Vehicle Images shown below are generic and may not match actual vehicle.

Please see your Toyota dealer for a copy of this document.

 <p>FRONT DOOR TEMPLATES</p>	 <p>FRONT DOOR EDGE GUARDS</p>	 <p>CLEANER</p>	 <p>NYLON REMOVAL TOOL</p>	 <p>MALLET</p>
		 <p>TAPE</p>	 <p>SCISSORS</p>	 <p>LINT FREE</p>

1

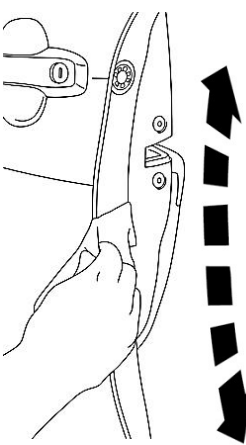


DOOR EDGE GUARD SEALANT ADJUSTMENT TOOL

CHECK DOOR SEALANT BEFORE INSTALLATION.
Do a visual check of the sealant on all four doors before install. The sealant adjustment tool must be used if sealant is close to the door's edge. Clearance is sufficient when the tool bottoms out on the door. Verifying the sealant condition must be done to allow for proper Door Edge Guard installation.

!

2



CLEAN ALL DOOR EDGES

BEGIN WITH NEW TOWEL.

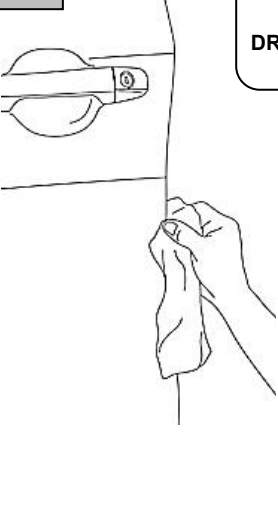
ROTATE TOWEL AFTER EACH WIPE. ONE TOWEL PER UNIT

Wipe thoroughly until clean

*Should feel resistance

!

3



DRY ALL DOOR EDGES

BEGIN WITH NEW TOWEL.


ROTATE TOWEL AFTER EACH WIPE. ONE TOWEL PER UNIT

MUST SQUEAK

!

4

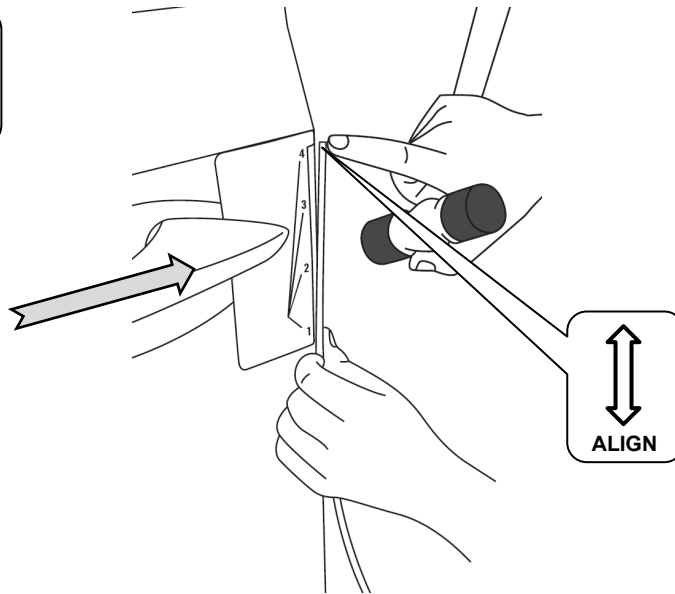
CLEAN TEMPLATE AND TEMPLATE CONTACT AREA



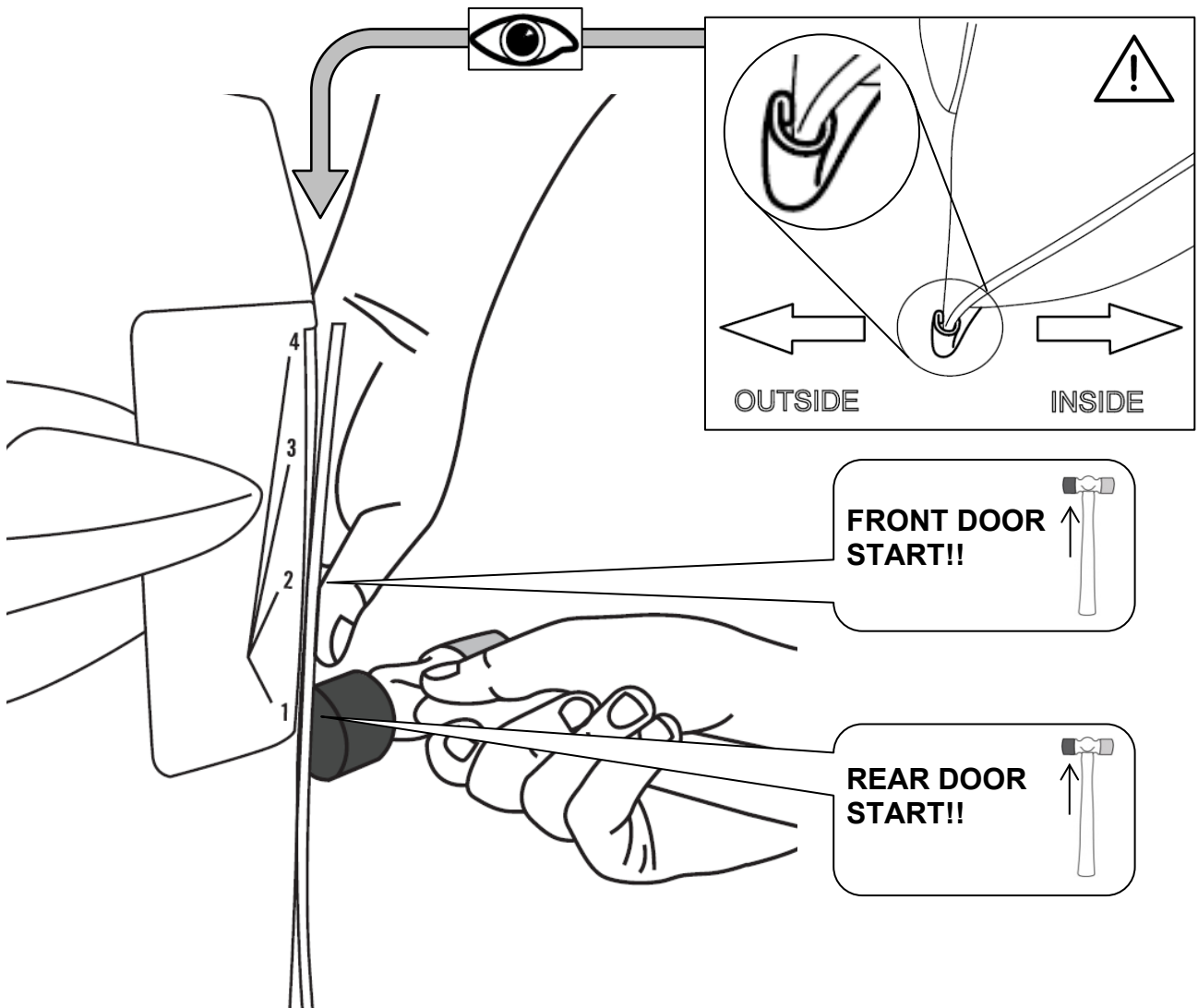
!

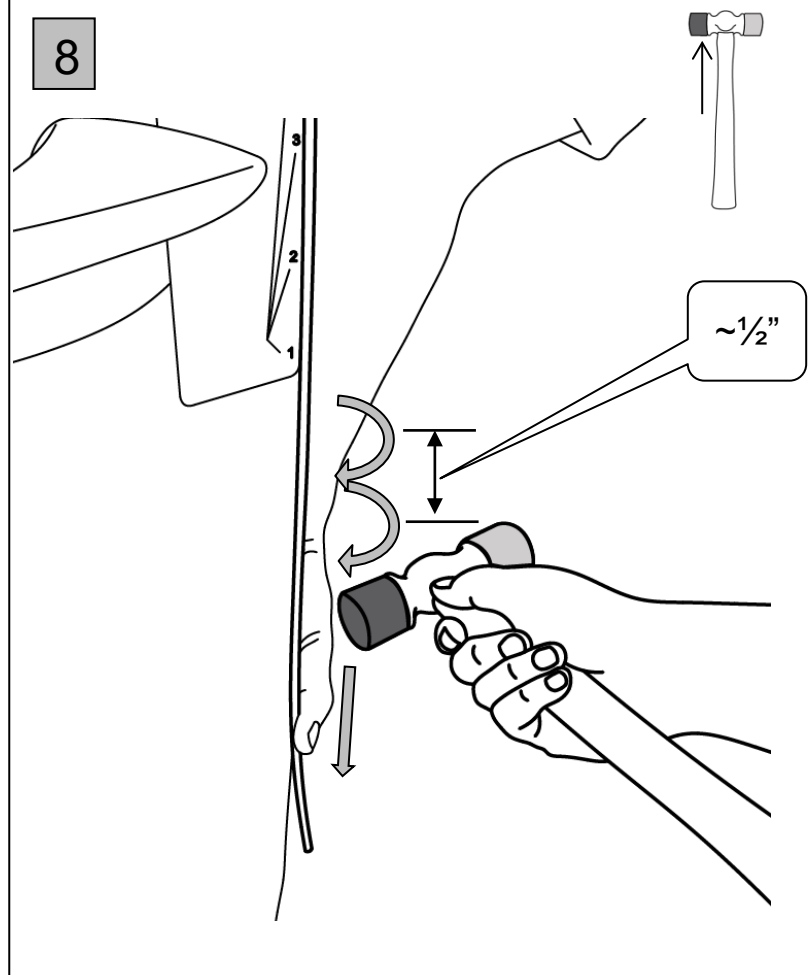
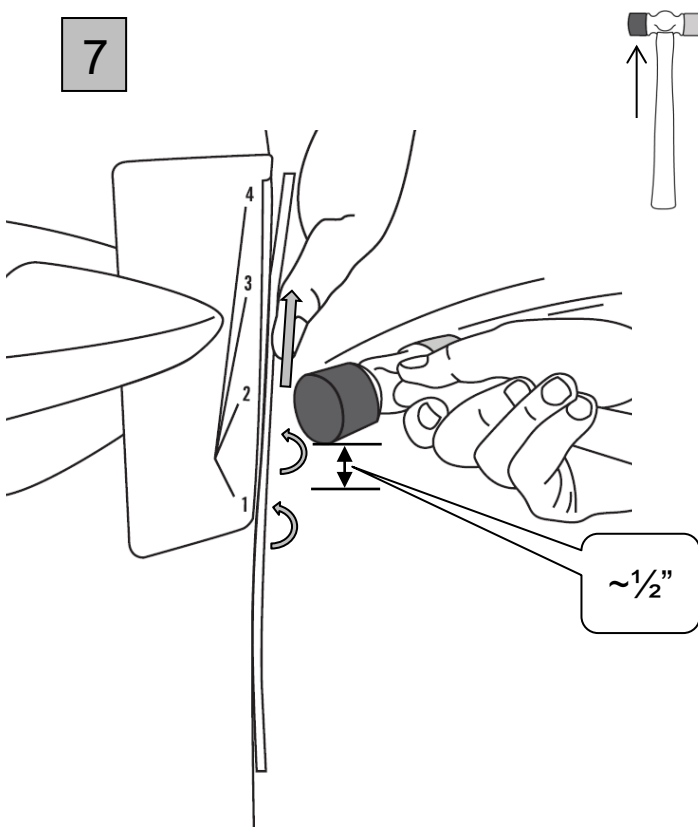
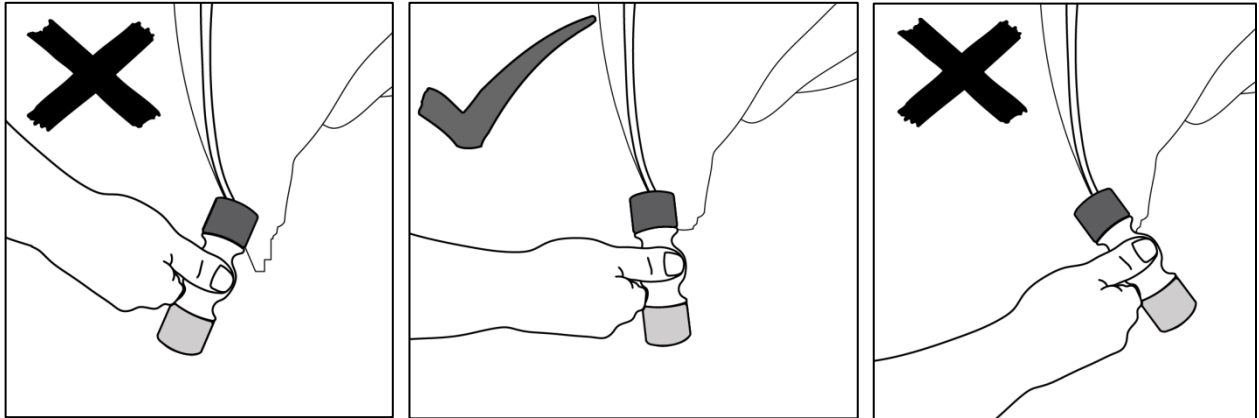
5

CLEAN
TEMPLATE AND
TEMPLATE
CONTACT
AREA

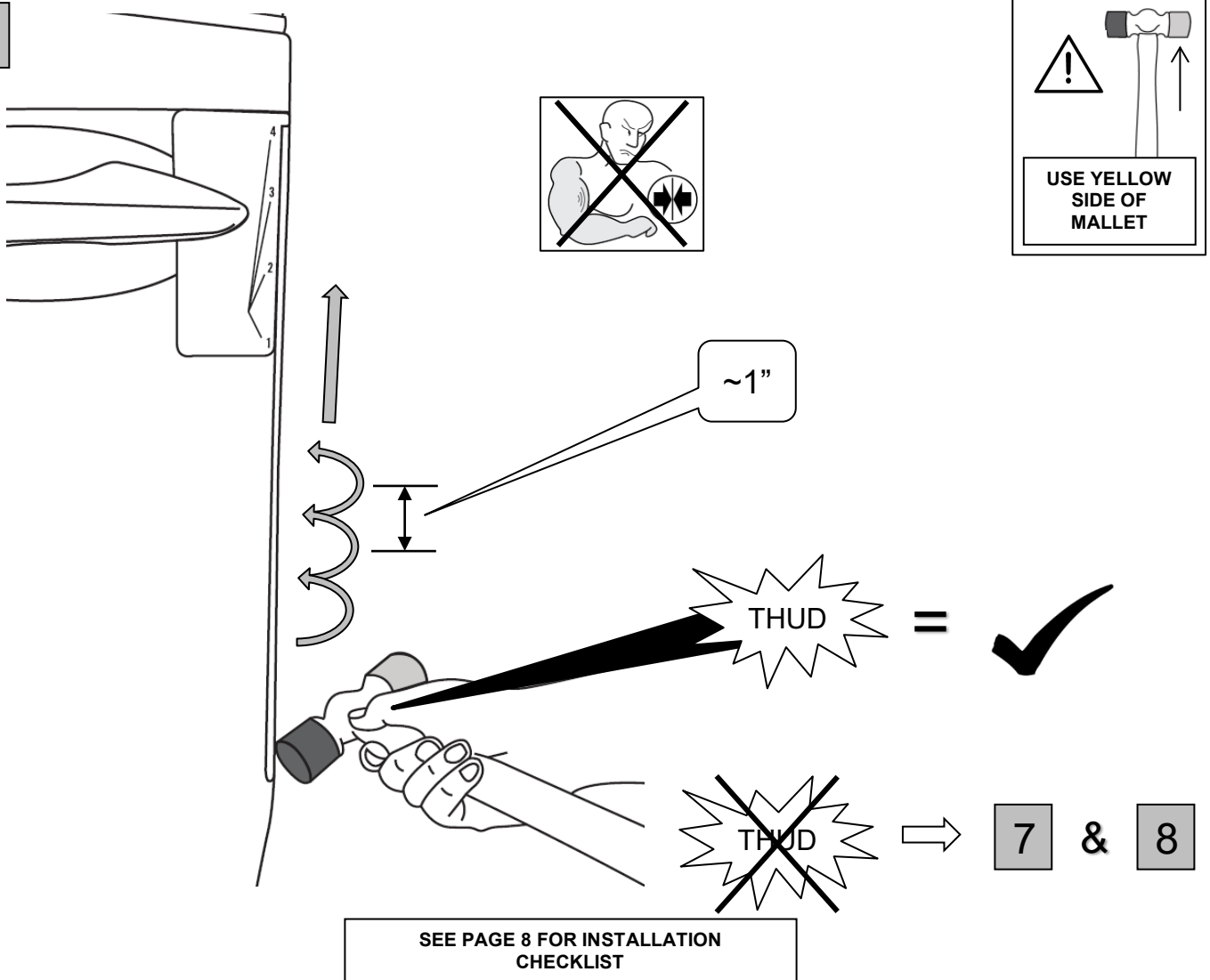


6



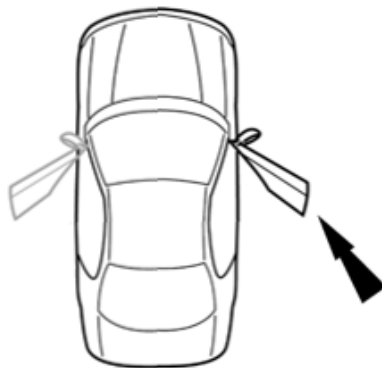


9

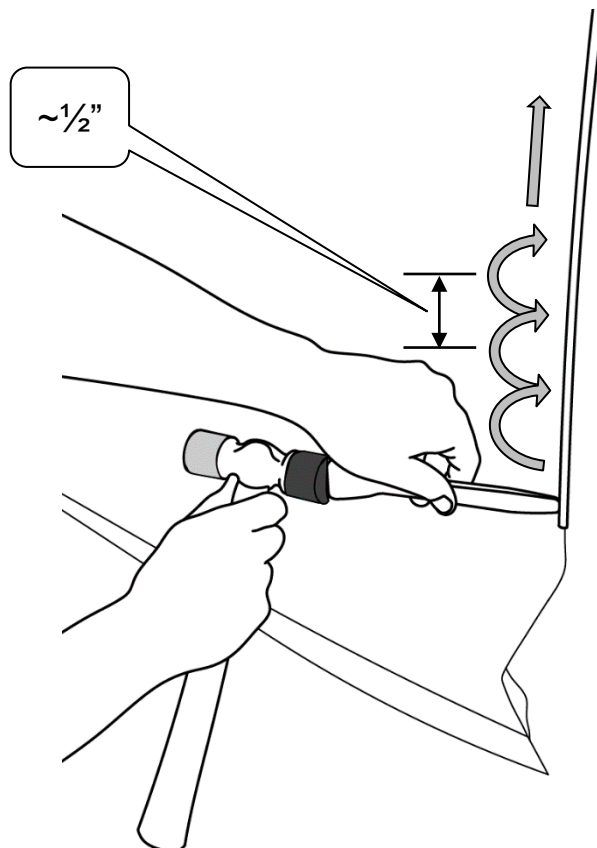
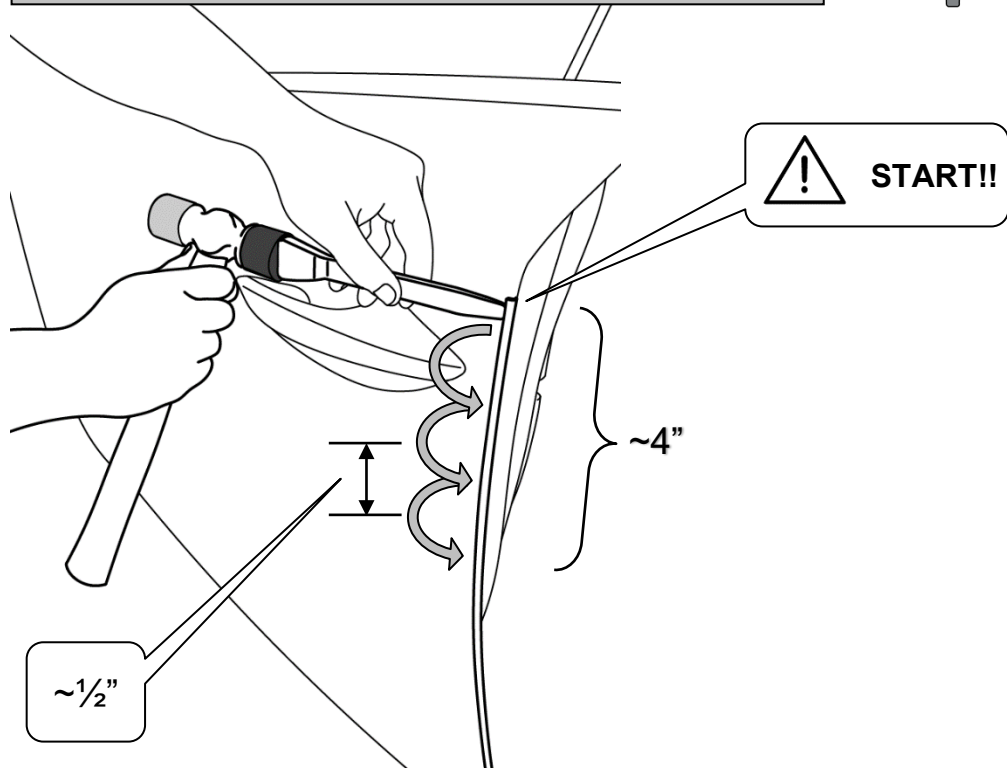
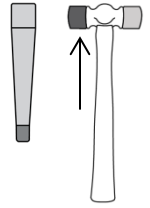


10

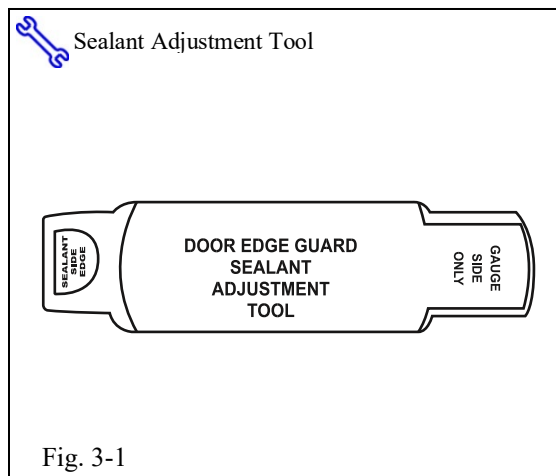
REPEAT ALL DOORS



DEG REMOVAL
DISCARD AFTER REMOVAL.
DO NOT REINSTALL DOOR EDGE GUARD.

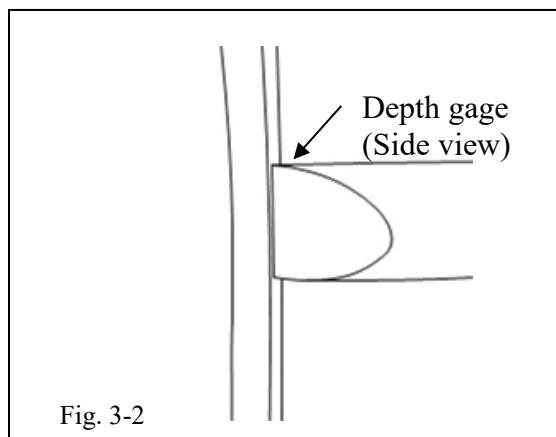


THIS PAGE PPO ONLY



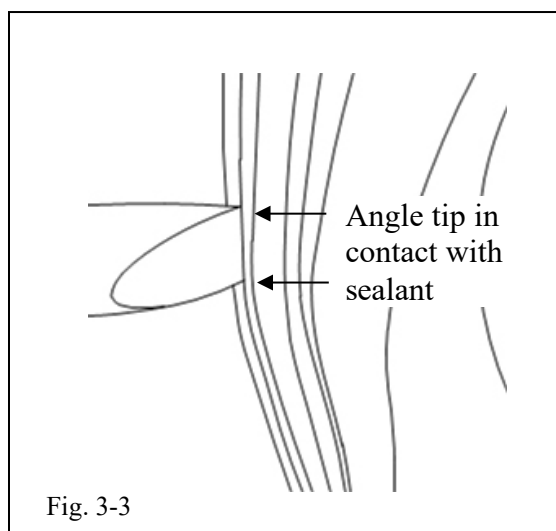
NOTE: Use the adjustment tool to verify if sealant is close to the door's edge. This must be done prior to **Door Edge Guard** installation to allow for proper fit (Fig. 3-1).

Check tool regularly for damage and wear. Channel depth should at least 3.0mm.



GAGE: Align the adjustment tool to the edge of the door, with the angle edge positioned toward the inside of the door (Fig. 3-2).

Use the adjustment tool as a depth gage down the entire length of the door's edge. Sealant clearance is sufficient when the tool bottoms out on the door's edge. This is to verify that the sealant material is away from the edge of the door allowing for proper Door Edge Guard installation.

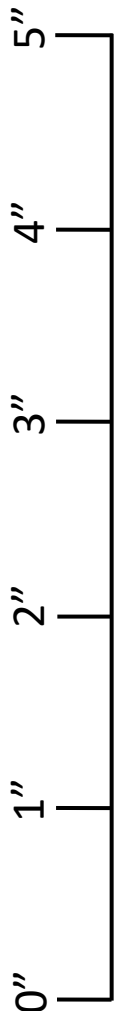


ADJUST: If sealant adjustment is needed then align the adjustment tool to the edge of the door, with the angle edge positioned toward the inside of the door (Fig. 3-3).

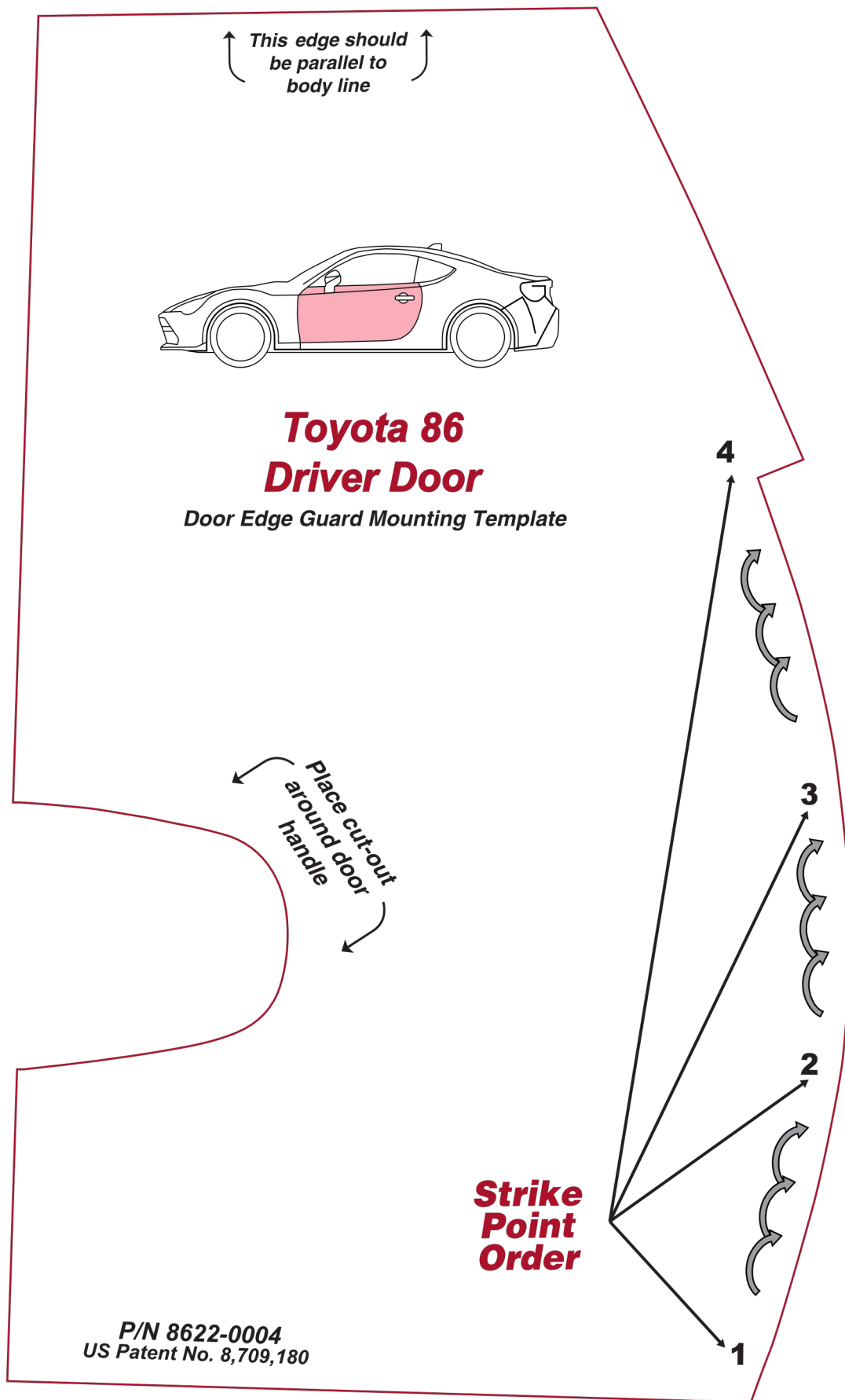
With the adjustment tool angle tip in contact with the sealant material, push the adjustment tool inward so that the tool bottoms out on the door's edge. Continue down the door's edge or sections of the door's edge that requires adjustment.

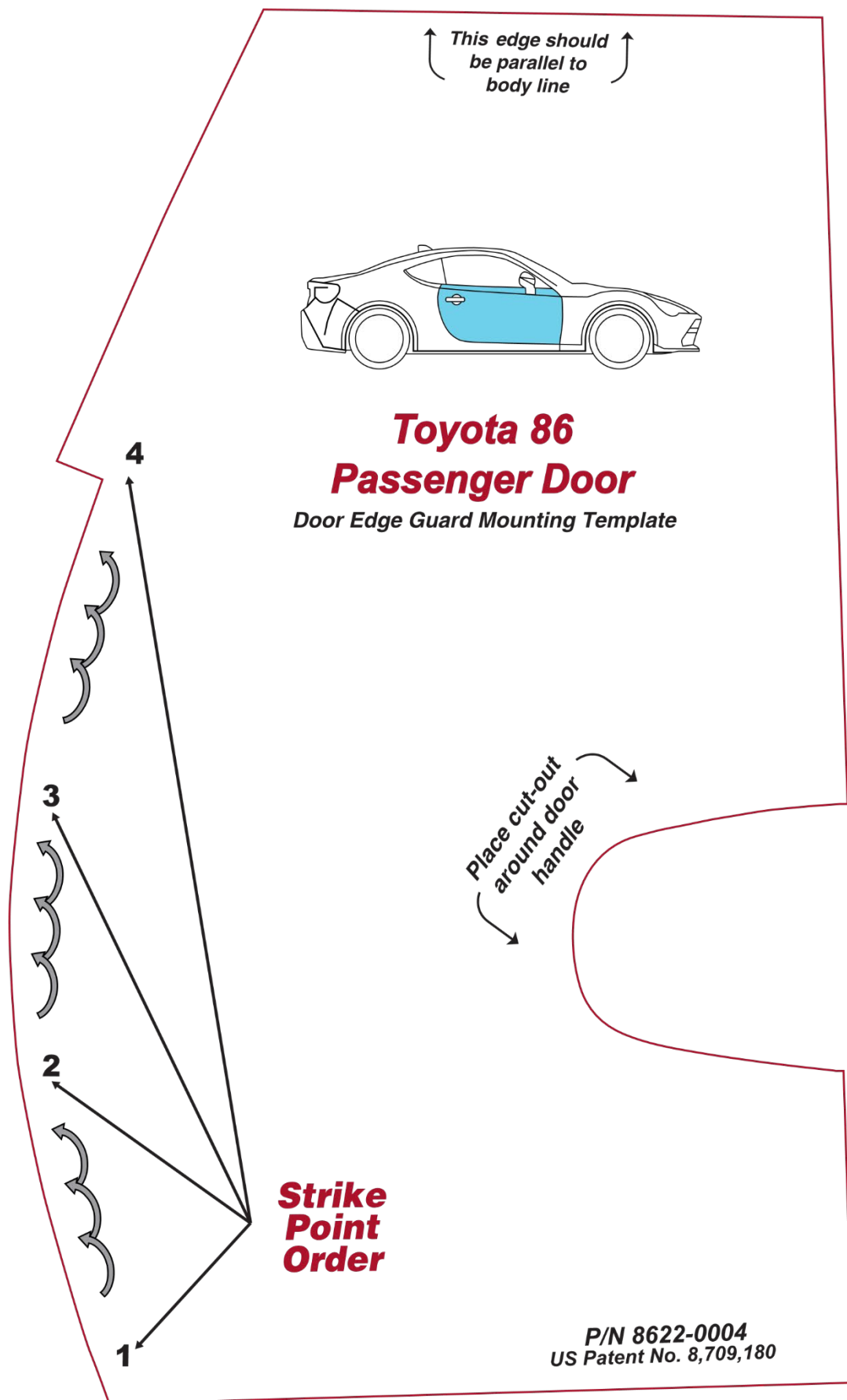
Checklist - these points **MUST** be checked to ensure a quality installation.

<p><u>Check:</u></p> <p><u>Accessory Function Checks</u></p> <p><input type="checkbox"/> Confirm all Door Edge Guards are fully seated.</p>	<p><u>Look For:</u></p> <p>Look for a fairly consistent gap between the DEG and adjoining vehicle panels.</p> <p>Gently use forefinger and thumb to pull Door Edge Guard to ensure it is properly seated. Follow the top, middle and bottom sequencing to gently pull the Door Edge Guard. Avoid pulling within 25mm of the very top and bottom of the DEG.</p> <p>NOTE: Normal vehicle manufacturing tolerances may exist that are not a consequence of an improperly seated DEG installation.</p>
<p><u>Vehicle Function Checks</u></p> <p><input type="checkbox"/> Vehicle door operation.</p>	<p>Confirm both doors open and close without interference from DEG or Body Side Molding (if installed).</p>
<p><u>Vehicle Appearance Check</u></p> <p><input type="checkbox"/> After accessory installation and removal of protective cover(s), perform a visual inspection.</p>	<p>Ensure no damage (including scuffs and scratches) was caused during the installation process.</p> <p>(For PPO installations, refer to TMNA Accessory Quality Shipping Standard.)</p>



Dealer Installation Note: Check the above scale to ensure it is 1:1. Adjust on photocopier if it is not to scale. If this is a pdf document, set the "Page Scaling" to "None" in the Print dialogue box prior to printing.





Dealer Installation Note: Check the above scale to ensure it is 1:1. Adjust on photocopier if it is not to scale. If this is a pdf document, set the "Page Scaling" to "None" in the Print dialogue box prior to printing.

