

Part Number: PT83K-08210-XX**Kit Contents**

Item #	Quantity Req'd.	Description
1	1	Molding, LH Front Door
2	1	Molding, LH Rear Door
3	1	Molding, RH Front Door
4	1	Molding, RH Rear Door

Hardware Bag Contents

Item #	Quantity Req'd.	Description
1		
2		
3		

Additional Items Required For Installation

Item #	Quantity Req'd.	Description
1		
2		
3		

Conflicts

None

Recommended Tools

Personal & Vehicle Protection	Notes
Safety Glasses	
Special Tools	Notes
Roller (Optional)	1" to 3" wide i.e. Marshalltown E54D or Dynamat 10007
Installation Tools	Notes
Flexible Scale or Tape Measure	
Masking Tape	1-in. wide
Clean Lint-free Cloths	
Non-marring straight edge	
Special Chemicals	Notes
Cleaner	

General Applicability

MY20 and newer Sienna Models

Recommended Sequence of Application

Item #	Accessory
1	Body Side Molding

*Mandatory

Vehicle Service Parts (may be required for reassembly)

Item #	Quantity Req'd.	Description

Legend

STOP: Damage to the vehicle may occur. Do not proceed until process has been complied with.



OPERATOR SAFETY: Use caution to avoid risk of injury.



CAUTION: A process that must be carefully observed in order to reduce the risk of damage to the accessory/vehicle and to ensure a quality installation.



TOOLS & EQUIPMENT: Used in Figures calls out the specific tools and equipment recommended for this process.



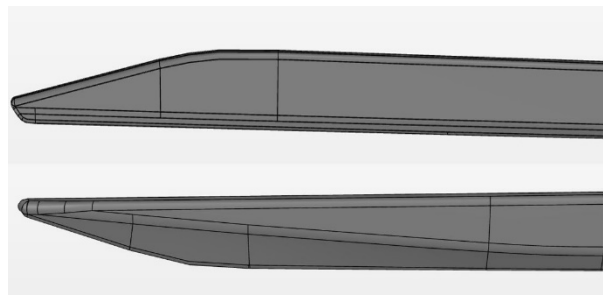
REVISION MARK: This mark highlights a change in installation with respect to previous issue.



SAFETY TORQUE: This mark indicates that torque is related to safety.



REGULATORY MARK: This mark indicates the component is related to regulatory compliance

**2X Front****2X Rear**

Care must be taken when installing this accessory to ensure damage does not occur to the vehicle. The installation of this accessory should follow approved guidelines to ensure a quality installation.

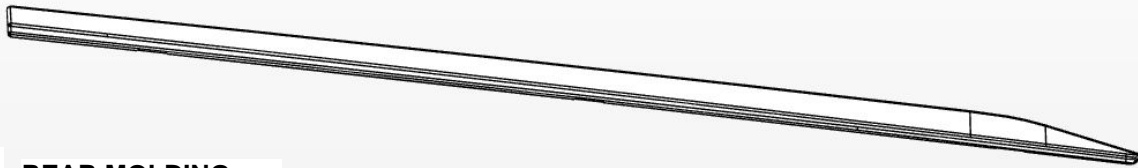
These guidelines can be found in the "Accessory Installation Practices" document.

This document covers such items as:-

- Vehicle Protection (use of covers and blankets, cleaning chemicals, etc.).
- Safety (eye protection, rechecking torque procedure, etc.).
- Vehicle Disassembly/Reassembly (panel removal, part storage, etc.).
- Electrical Component Disassembly/Reassembly (battery disconnection, connector removal, etc.).

Please see your Toyota dealer for a copy of this document.

X 2 FRONT MOLDING



X 2 REAR MOLDING



1



ENSURE VEHICLE IS CLEAN AND PREPPED FOR INSTALL.



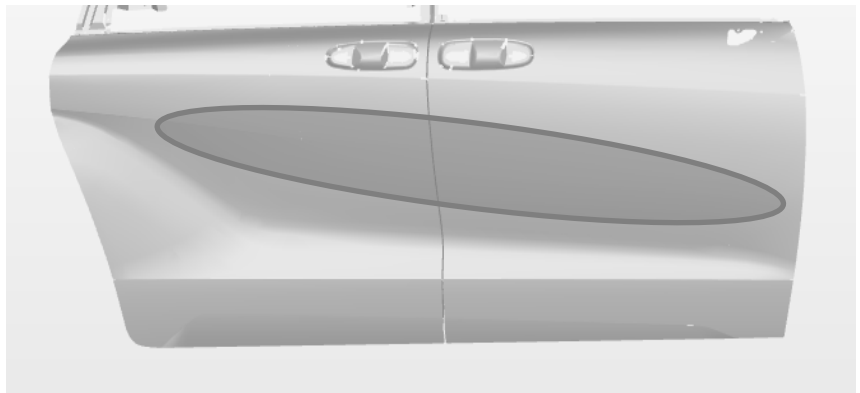
ENSURE DOOR SURFACE TEMPERATURE IS BETWEEN 60°F (16°C) TO 90°F (32°C).



SATURATE AND CLEAN AREA USING A LINT FREE CLOTH.

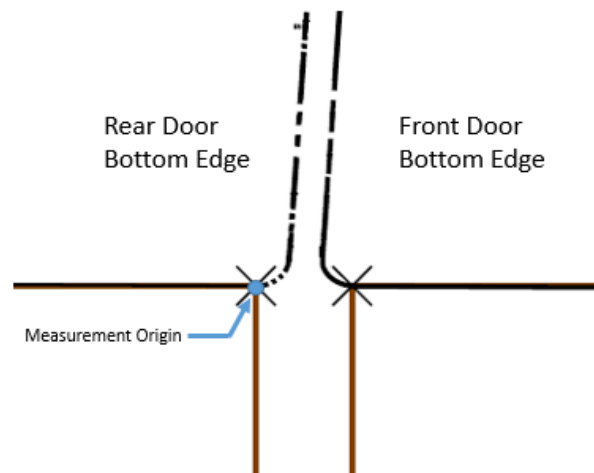


WIPE THE CLEANED SURFACE WITH A DRY LINT-FREE CLOTH.

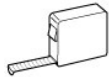


2

LOCATE THE HORIZONTAL MEASUREMENT LOCATION ON THE FRONT AND REAR DOORS.



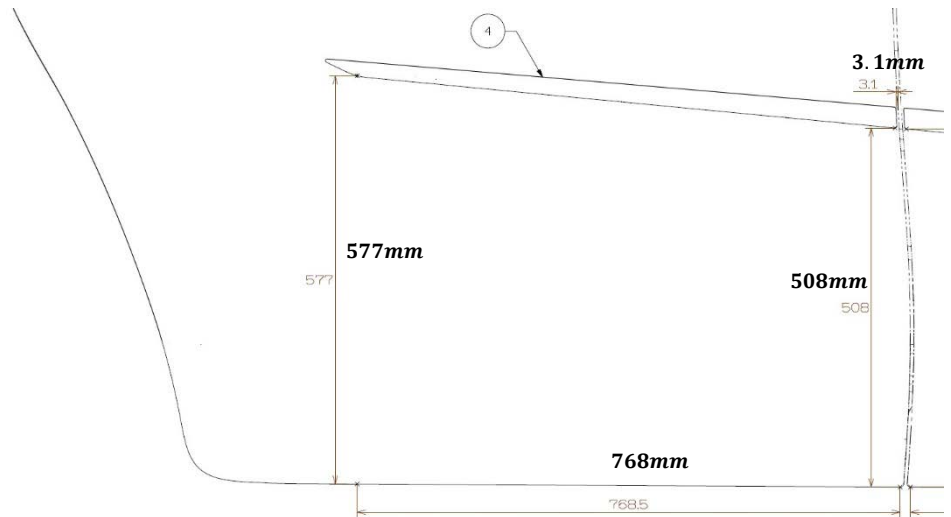
Procedure

3**REAR DOOR**

MEASURE THE LOCATIONS
ALONG THE LOWER EDGE OF
THE REAR DOOR, THEN
MEASURE THE VERTICAL
LOCATIONS FOR THE REAR
MOLDING.(MM OR IN)



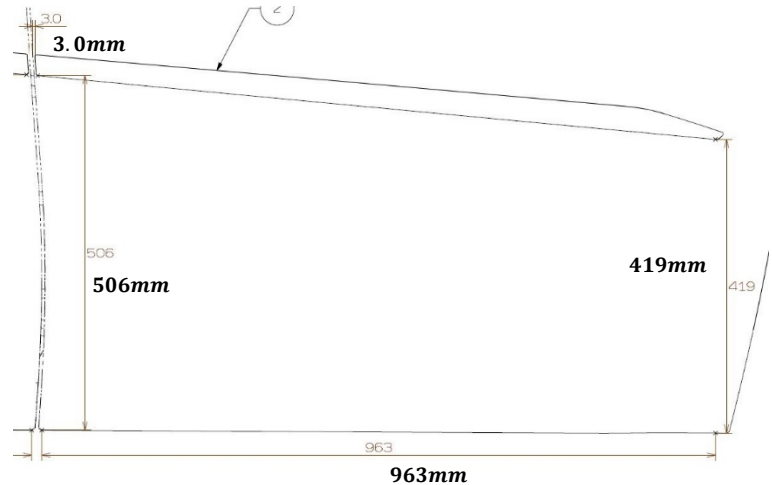
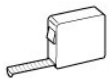
FOR EACH VERTICAL
LOCATION, PLACE A PIECE OF
TAPE ON THE REAR DOOR.

**4****FRONT DOOR**

MEASURE THE LOCATIONS
ALONG THE LOWER EDGE OF
THE FRONT DOOR, THEN
MEASURE THE VERTICAL
LOCATIONS FOR THE FRONT
MOLDING.



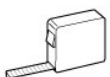
FOR EACH VERTICAL
LOCATION, PLACE A VERTICAL
PIECE OF TAPE ON THE FRONT
DOOR.

**5**

MEASURE THE DISTANCE FROM THE
EDGE OF THE FRONT DOOR TO THE
EDGE OF THE FRONT MOLDING.



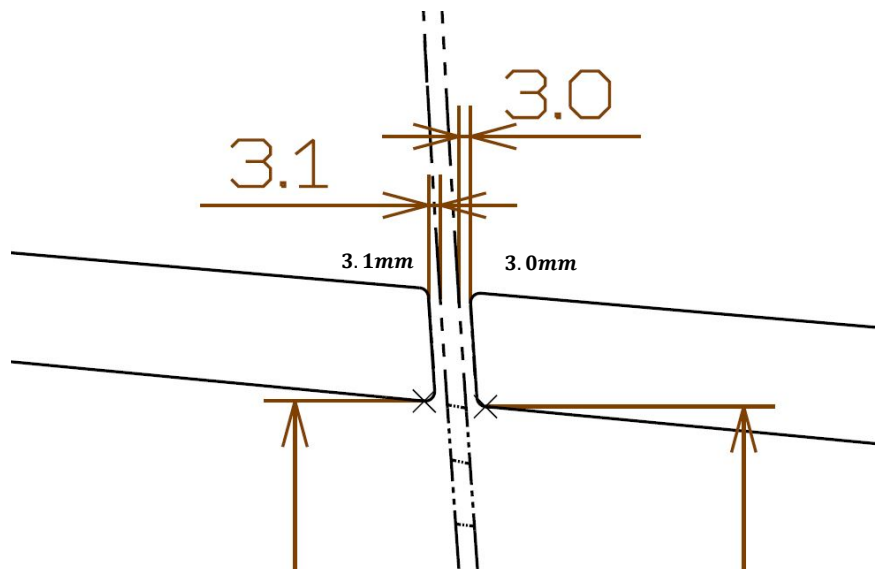
USING A PIECE OF TAPE, MARK THE
LOCATION OF THE FRONT MOLDING
FROM THE EDGE OF THE FRONT DOOR.



MEASURE THE DISTANCE FROM THE
EDGE OF THE REAR DOOR TO THE
EDGE OF THE REAR MOLDING.

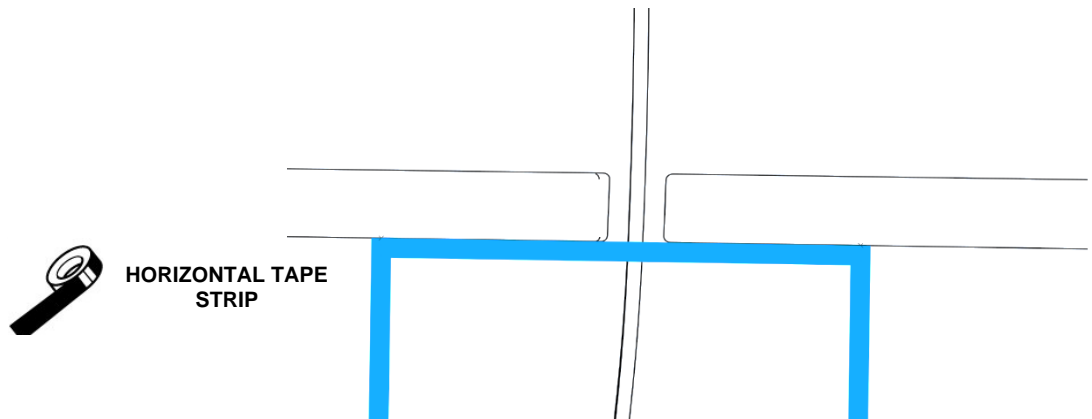


USING A PIECE OF TAPE, MARK THE
LOCATION OF THE REAR MOLDING
FROM THE EDGE OF THE REAR DOOR.



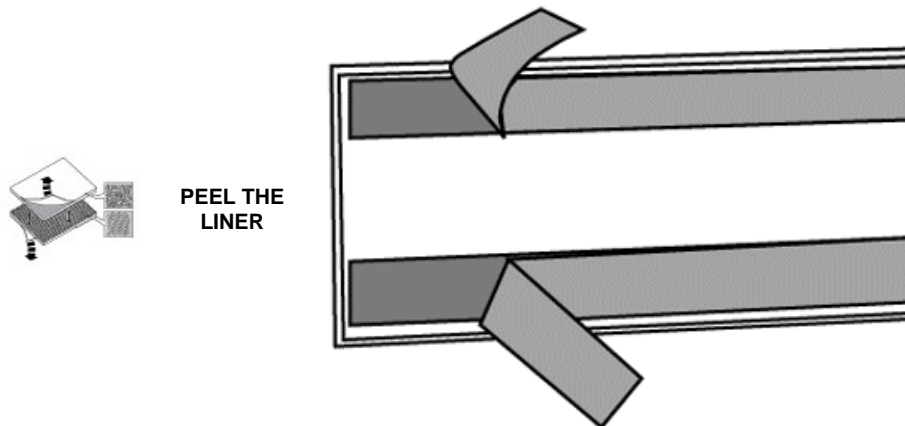
6

APPLY A HORIZONTAL STRIP OF TAPE BRIDGING THE FRONT AND REAR DOOR GAP.



7

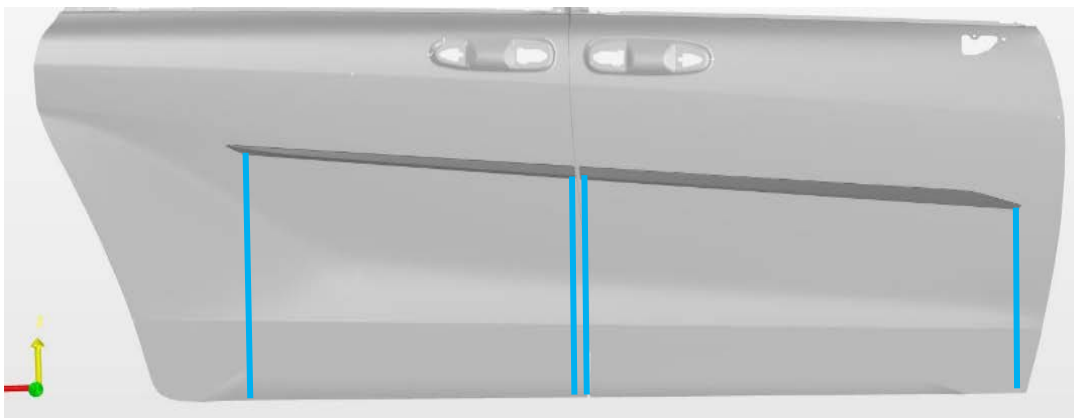
FOR EACH MOLDING, CAREFULLY FOLD THE LINER TABS AWAY FROM THE MOLDING SUCH THAT THE TABS ARE ACCESSIBLE WHEN THE MOLDING IS IN INSTALL POSITION.



8

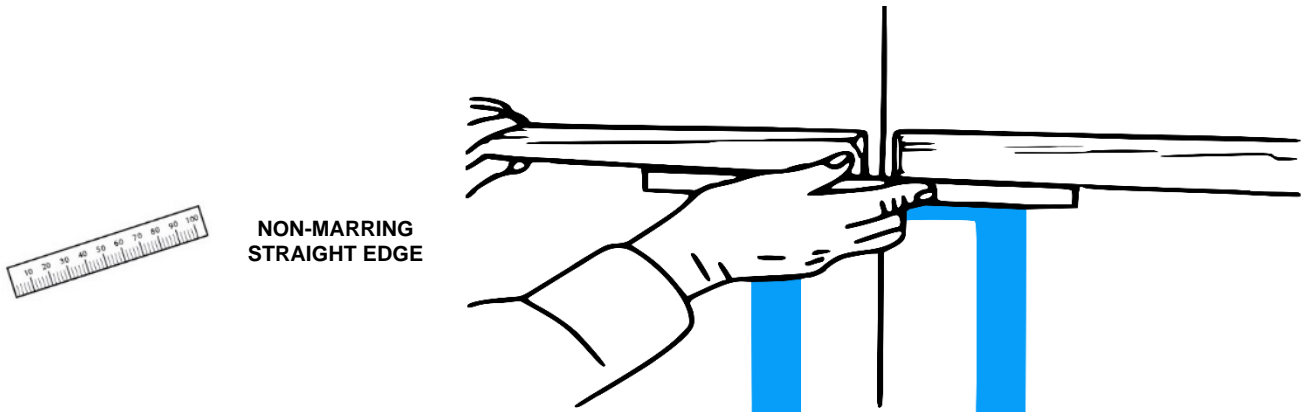
CAREFULLY HOLDING THE REAR MOLDING, ALIGN THE MOLDING ON THE MARKED LOCATIONS. BEGIN TO PEEL AWAY THE LINER BEGINNING FROM THE END OF THE VEHICLE.

REPEAT FOR THE FRONT MOLDING.



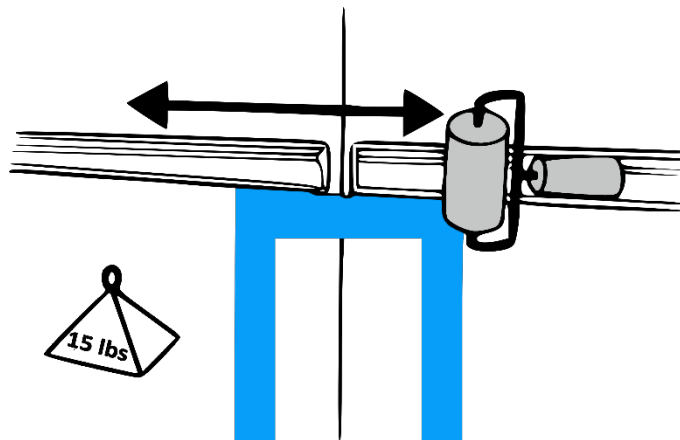
9

CHECK THE ALIGNMENT BETWEEN THE MOLDINGS BY PLACING A NON-MARRING STRAIGHT EDGE FLUSH WITH THE BOTTOM OF THE FRONT AND REAR MOLDINGS. THE EDGES MUST ALIGN.




10

USE A HAND ROLLER TO ROLL OVER THE MOLDINGS WHILE APPLYING 15 LBS OF FORCE TO ENSURE COMPLETE ADHESION OF TAPE TO THE DOOR SURFACE.



TOYOTA SIENNA 2020 - BODY SIDE MOLDING

Checklist - these points **MUST** be checked to ensure a quality installation.

Check:	Look For:
<u>Accessory Function Checks</u> <input type="checkbox"/> Check for visual alignment  <input type="checkbox"/> Check for proper tape adhesion <input type="checkbox"/> <input type="checkbox"/>	 The molding should be visually straight. Confirm 100% tape adhesion completely around the part between the molding and door sheet metal No gap is allowed between the tape and the vehicle door surface, except where the tape seam joints on the backside
<u>Vehicle Function Checks</u> <input type="checkbox"/> <input type="checkbox"/> <input type="checkbox"/>	
<u>Vehicle Appearance Check</u> <input type="checkbox"/> After accessory installation and removal of protective cover(s), perform a visual inspection.	 Ensure no damage (including scuffs and scratches) was caused during the installation process. (For PPO installations, refer to TMNA Accessory Quality Shipping Standard.)