

Part Number: PT413-42190 (Chrome)**Kit Contents**

Item #	Quantity Req'd.	Description
1	1	Fog Lamp, Left
2	1	Fog Lamp, Right
3		

Hardware Bag Contents

Item #	Quantity Req'd.	Description
1		
2		
3		

Additional Items Required For Installation

Item #	Quantity Req'd.	Description
1		
2		
3		

Conflicts

TRD Pro Fog Lamp

Recommended Tools

Personal & Vehicle Protection	Notes
Special Tools	Notes
Installation Tools	Notes
#2 Phillips Screwdriver	3" long
10mm Socket	Standard length
1/4" drive extension	1-1/2"
1/4" drive ratchet	
Small NRT	
Special Chemicals	Notes

General Applicability

MY20 and newer Tacoma (all except TRD Pro) models

Recommended Sequence of Application

Item #	Accessory
1	
2	
3	

*Mandatory

Vehicle Service Parts (may be required for reassembly)

Item #	Quantity Req'd.	Description
1		
2		
3		

Legend**STOP:** Damage to the vehicle may occur. Do not proceed until process has been complied with.**OPERATOR SAFETY:** Use caution to avoid risk of injury.**CAUTION:** A process that must be carefully observed in order to reduce the risk of damage to the accessory/vehicle and to ensure a quality installation.**TOOLS & EQUIPMENT:** Used in Figures calls out the specific tools and equipment recommended for this process.**REVISION MARK:** This mark highlights a change in installation with respect to previous issue.**SAFETY TORQUE:** This mark indicates that torque is related to safety.**REGULATORY MARK:** This mark indicates the component is related to regulatory compliance

Procedure

Care must be taken when installing this accessory to ensure damage does not occur to the vehicle. The installation of this accessory should follow approved guidelines to ensure a quality installation.

These guidelines can be found in the "Accessory Installation Practices" document.

This document covers such items as:-

- Vehicle Protection (use of covers and blankets, cleaning chemicals, etc.).
- Safety (eye protection, rechecking torque procedure, etc.).
- Vehicle Disassembly/Reassembly (panel removal, part storage, etc.).
- Electrical Component Disassembly/Reassembly (battery disconnection, connector removal, etc.).

Please see your Toyota dealer for a copy of this document.

1. Prepare for the Installation.



(a) Protect the fender before starting.



(b) The engine components and coolant may be hot.

(c) Check the kit for contents or damage.

(d) Remove battery negative terminal (Fig. 1-1).



CAUTION: Do not touch the positive terminal with any tool during removal.

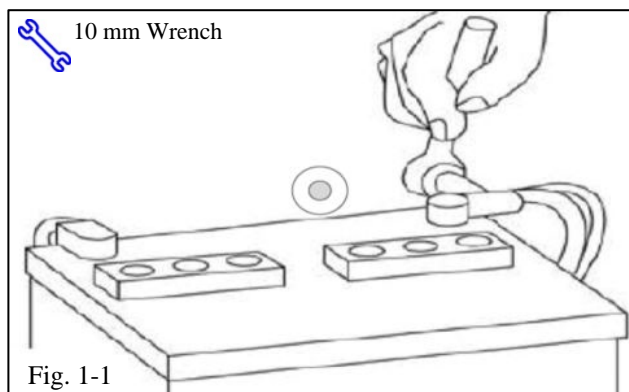


Fig. 1-1

2. Place Vehicle on a Chassis Lift.

(a) Raise vehicle to a comfortable working height.

(b) Turn the wheel/tire outward to gain additional clearance (Fig. 2-1).

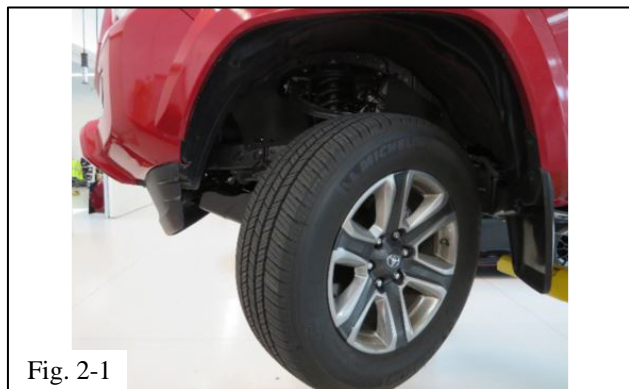
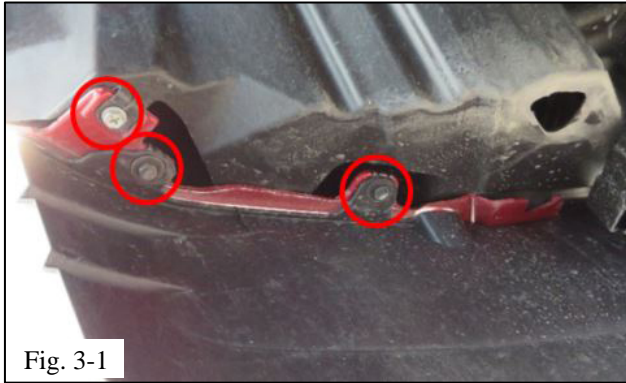


Fig. 2-1

3. Partially Remove the Fender Liner

- (a) Left side of vehicle shown, right side is the same process.
- (b) Remove the (2) outer spoiler screws and the (1) lower fender liner screw and save for re-use (Fig. 3-1).



- (c) From the wheel well, remove the (1) 1/4 turn fastener from the bumper as shown (Fig. 3-2).
 - (1) Turn the fastener until the slot is horizontal. Pull the pin, remove and save for re-use.



- (d) Remove the (1) push fastener from inside the wheel well (Fig. 3-3).
 - (1) Lift the head with an NRT, remove the entire fastener and save for re-use.



Fig. 3-4

- (e) Remove the fender liner screw located in front of the spoiler and save for reuse (Fig. 3-4).
- (f) Pull the fender liner back enough to gain access to the back side of the bumper.

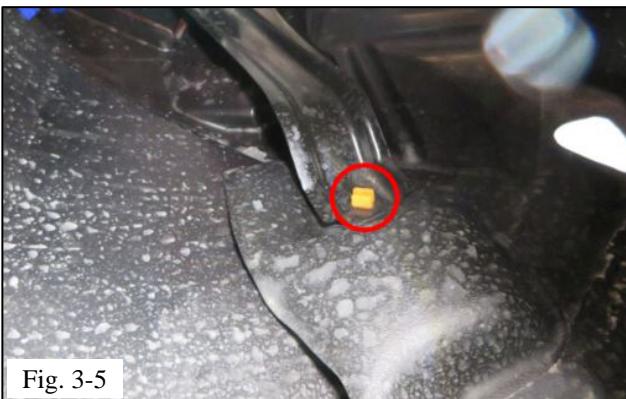


Fig. 3-5

- (g) Locate the orange clip attached to the metal brace and remove the clip (Fig. 3-5).

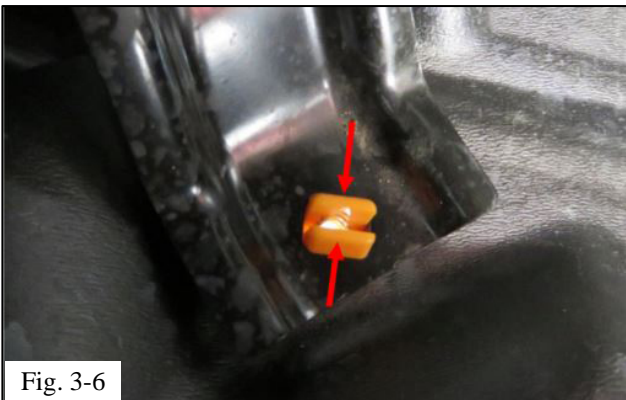


Fig. 3-6

- (1) To remove the orange clip, squeeze the legs of the clip together and push downward (Fig. 3-6).

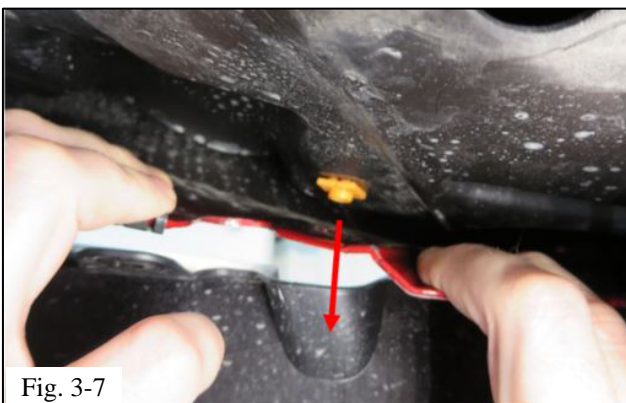
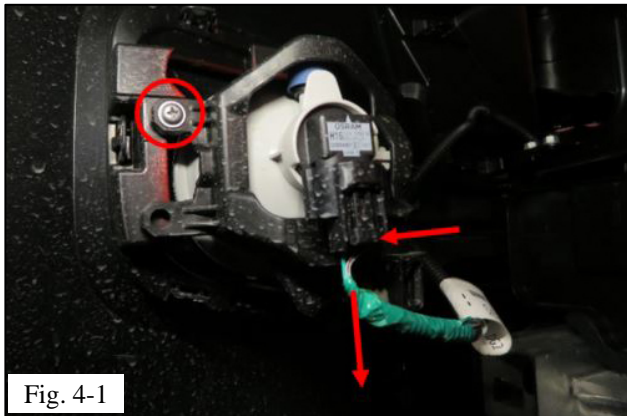


Fig. 3-7

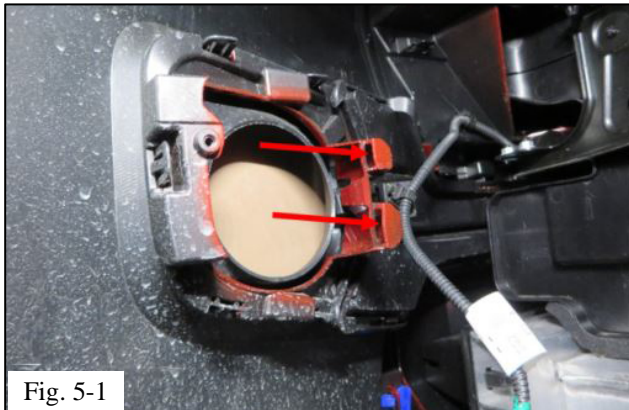
- (2) Now, from under the vehicle, pull down on the lower edge of the bumper to gain access to the orange clip, remove and save for reuse (Fig. 3-7).
- (h) With the orange clip removed you can now fully pull the fender liner back to gain access to the fog lamp.



4. Remove the OE Fog Lamp

- (a) From behind the bumper, disconnect the fog lamp connector by pushing in on the release tab and pulling down on the connector (not the wires) (Fig. 4-1).
- (b) Remove the (1) fog lamp mounting screw and save for reuse (Fig. 4-1).
- (c) Remove the fog lamp and discard.

5. Install the LED Fog Lamp



- (a) The LED Fog Lamps are marked LH and RH. Choose the LH Fog Lamp.
- (b) Insert the (2) inner mounting legs of the LED Fog Lamp into the mating slots in the bumper and rotate into position (Fig. 5-1).



- (c) Reinstall the (1) fog lamp mounting screw. Do not over tighten (Fig. 5-2).
- (d) Connect the fog lamp connector to the fog lamp. Push in until you hear an audible click (Fig. 5-2).

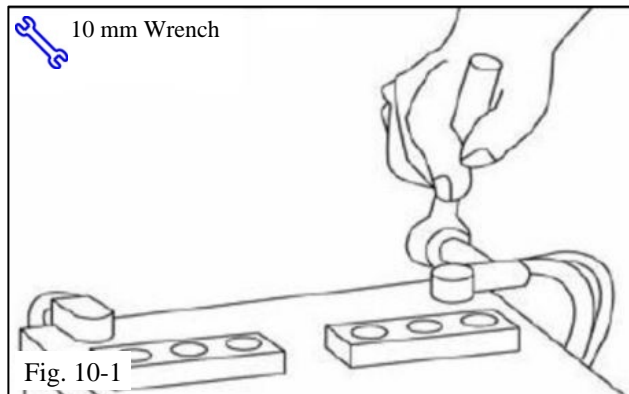
6. Reinstall the Fender Liner

- (a) Reposition the fender liner so all mounting holes are re-aligned to the vehicle.
- (b) Reinstall the (1) push fastener inside the wheel well (Fig. 3-3).
- (c) Reinstall the (1) 1/4 -turn fastener into the bumper (Fig. 3-2).
 - (1) Install the pin with the slot horizontal.
 - (2) Once fully inserted, turn the slot vertical to lock.
- (d) From behind the spoiler, pull down on the lower edge of the bumper (Fig. 6-1).
 - (1) This will give you clearance to reinsert the orange clip.
- (e) Align the square fender liner hole with the square hole in the metal brace and reinsert the orange clip through both (Fig. 3-7).
- (f) From in front of the vehicle, reinstall the (1) fender liner screw into the orange clip (Fig. 3-4).
- (g) Reinstall the (2) spoiler screws and the (1) lower fender liner screw (Fig. 3-1).



7. Install the Opposite Side Fog Lamp

- (a) Repeat Steps 4-9 on opposite side of vehicle.




8. Return the front wheels to straight.

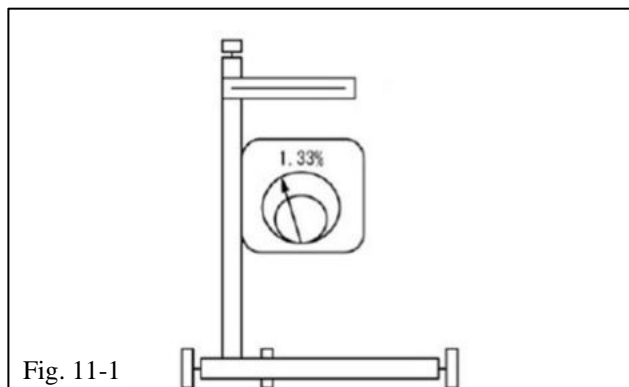
9. Lower the vehicle.

10. Reconnect the Battery.

11. Reconnect the negative battery cable (Fig. 10-1).

 Torque: 5.4 N•m (48 in•lbs)

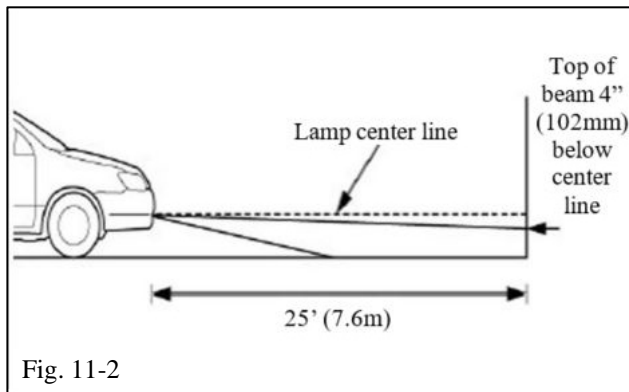
 **CAUTION:** Do not touch the positive terminal with any tool.



12. Aim the Fog Lights (DIO/PPO if required).

(a) If available, use a Hella Photometric Beam Setter (or equivalent) to align the fog light beam (Fig. 11-1).

 **NOTE:** If a beam setter is not available, use a wall to aim the lights.



- (1) Position the vehicle on a flat surface at a distance of 25 feet (7.6m) from the fog light to a wall (Fig. 11-2).
 - (2) Measure the distance from the center of the lamp to the ground and mark off the same height on the wall. This is the fog light centerline (Fig. 11-2).
 - (3) Turn on the fog lights and adjust them so that the top of the beam (high intensity portion) falls 4 inches (102 mm) below the mark on the wall (the fog light centerline) (Fig. 11-2).
- (b) Use a 10mm deep socket and 8" extension to turn the adjustment screw on the fog lights.

Checklist - these points **MUST** be checked to ensure a quality installation.

Check:	Look For:
<p><u>Accessory Function Checks</u></p> <ul style="list-style-type: none"> <input type="checkbox"/> Install a short pin (if necessary) <input type="checkbox"/> Turn the headlights on <input type="checkbox"/> Check the fog lamp switch illumination <input type="checkbox"/> Turn the fog lamps on <input type="checkbox"/> Switch the high beams on <input type="checkbox"/> Turn the headlights off <input type="checkbox"/> Check the fog light switch orientation 	<ul style="list-style-type: none"> Headlights function as normal Switch lights up Fog lamps turn on Fog lamps turn off Headlights and fog lamps turn off The lamp symbol faces left
<p><u>Vehicle Function Checks</u></p> <ul style="list-style-type: none"> <input type="checkbox"/> Taillights/brake lights turn signals <input type="checkbox"/> Reverse lights & emergency flashers <input type="checkbox"/> Mirror/dimmer controls/fuel door switch <input type="checkbox"/> Traction control <input type="checkbox"/> Hood Release Latch 	<ul style="list-style-type: none"> All function properly Functions properly Functions properly Functions properly Functions properly
<p><u>Vehicle Appearance Check</u></p> <ul style="list-style-type: none"> <input type="checkbox"/> After accessory installation and removal of protective cover(s), perform a visual inspection. 	<p>Ensure no damage (including scuffs and scratches) was caused during the installation process. (For PPO installations, refer to TMS Accessory Quality Shipping Standard.)</p>