

**Part Number: PT398-47160**

**Conflicts**

--

**Recommended Sequence of Application**

Item#	Quantity	Description
1	TVIP/RS3200 Plus	Any TVIP or RS3200 system

**Kit Contents**

Item#	Quantity	Description
1	1	V5 Wire Harness

**Hardware Bag Contents**

Item#	Quantity	Description
1	1	GBS ECU 08190-0C820
2	1	GBS ECU Mounting Bracket
3	1	Foam Tape
4	20	Wire Ties
5	1	Vinyl Sheet
6	1	M6 Nut 91651-60618
7	1	GBS Microphone 08192-6C810
8	2	V5 Window Label English 00107-VIPWS
9	2	V5 Window Label Spanish PT398-48142-AA
10	1	V5 Owner's Guide

**Additional Items Required For Installation**

Item#	Quantity	Description

**Recommended Tools**

Personal & Vehicle Protection	Description
Safety Glasses	
Safety Gloves	(Optional)
Blankets, Parts Boxes	
Special Tools	
Techstream	Version 10.30.029 or later
Striker Tool	CAD-E IADS P/N ALL 02-016-01
Wiring Terminal Tool	CAD-E IADS P/N ALL 02-016-03
Installation Tools	
Screwdriver	#2 Phillips, Flat Blade Jeweler's
Nylon Panel Removal Tool	e.g. Panel Pry Tool #1 Toyota SST# 00002-06001-01
Side Cutters	
Torque Wrench	Battery: 48 in•lbf (5.4 N•m), Bracket Bolt: 71 in•lbf (8 N•m),
Tape	Clear, Electric
Pick Tool	
Utility Knife	
Socket	10mm, extension
Special Chemicals	
Cleaner	VDC Approved Cleaner

**Legend**



**STOP:** Damage to the vehicle may occur. Do not proceed until process has been complied with.



**OPERATOR SAFETY:** Use caution to avoid risk of injury.



**CAUTION:** : A process that must be carefully observed in order to reduce the risk of damage to the accessory/vehicle and to ensure a quality installation.



**TOOLS AND EQUIPMENT:** Used in Figures calls out the specific tools and equipment recommended for this process.



**REVISION MARK:** This mark highlights a change in installation with respect to previous issue.



**SAFETY TORQUE:** This mark indicates that torque is related to safety.

**Accessory Installation Practice (read before installation)**

Care must be taken when installing this accessory to ensure damage does not occur to the vehicle. The installation of this accessory should follow approved guidelines to ensure a quality installation.

These guidelines can be found in the “Accessory Installation Practices” document.

This document covers such items as:

- Vehicle Protection (use of covers and blankets, cleaning chemicals, etc.)
- Safety (eye protection, checking torque procedure, etc.)
- Vehicle Disassembly/Reassembly (panel removal, part storage, etc.)
- Electrical Component Disassembly/Reassembly (battery disconnection, connector removal, etc.)

Please see your Toyota dealer for a copy of this document.



## Table of Contents

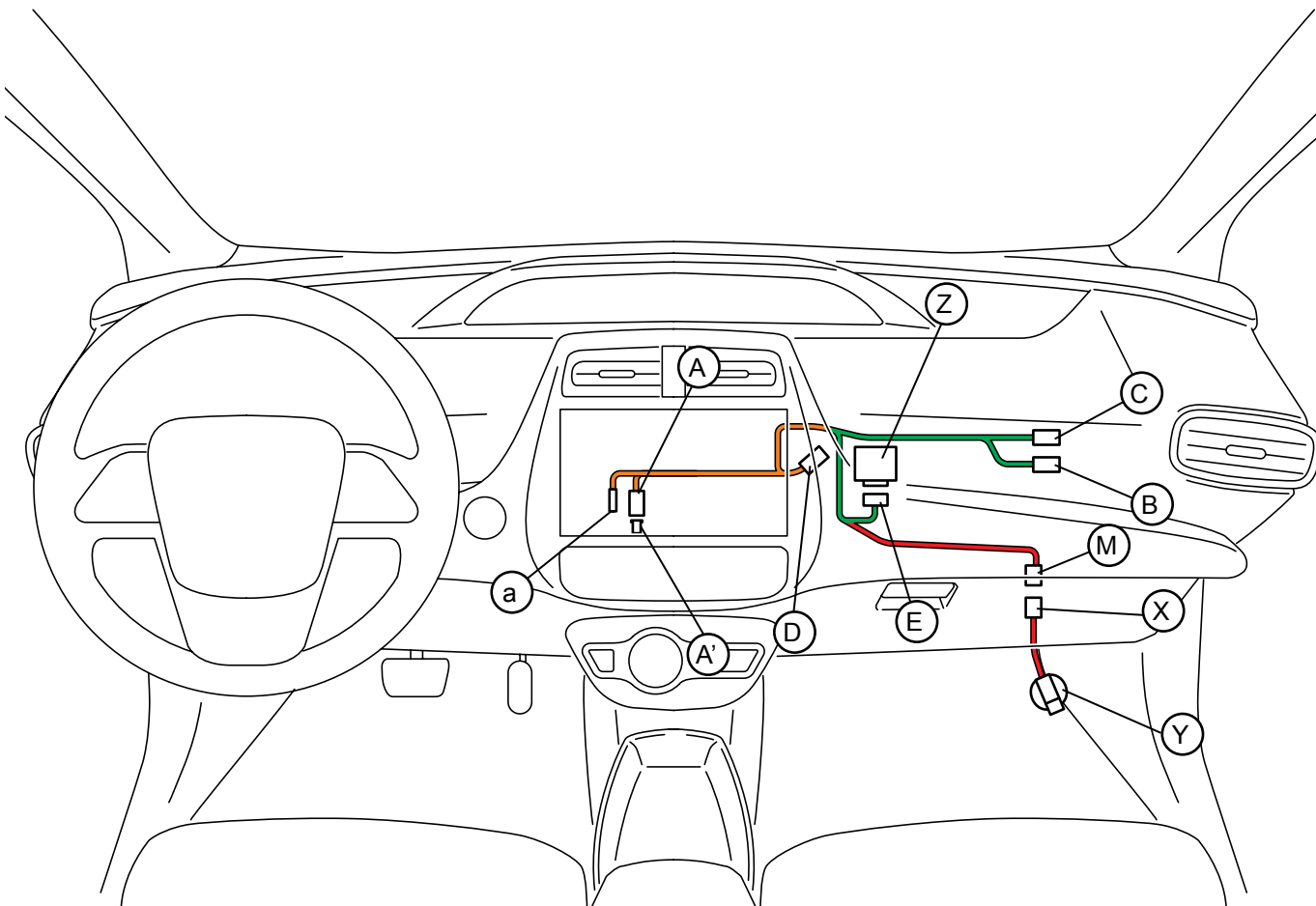
---

I. Preparation .....	1-4
1. Table of Contents .....	2
2. Wire Routing Overview .....	3
3. Perform the Following .....	4
II. Procedure .....	5-24
1. Preparation. ....	5
2. Vehicle Disassembly. ....	6
3. GBS ECU & V5 Harness Preparation and Installation .....	8
4. Microphone Installation. ....	17
5. Registration .....	20
6. Window Label Installation .....	24
7. Complete the Installation. ....	24
III. Checklist .....	25-29
1. Accessory Function Checks.....	25
2. Vehicle Function Check .....	27
3. Vehicle Appearance Check .....	28



# TOYOTA PRIUS RS3200 PLUS

## Wire Harness Outline\*

[illegible]



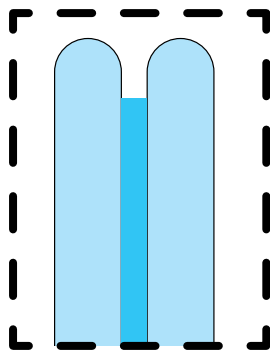


**CAUTION:** There are two Sensitivity Values for the GBS ECU.  
You must first determine which Glass your vehicle has.



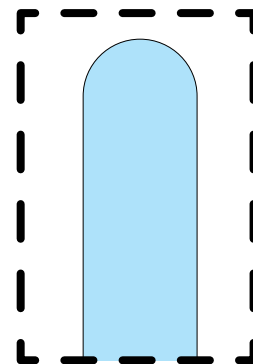
**Perform the Following.**

- Roll down the Drivers window partway.
- Look at the edge of the window.



**THIS VEHICLE HAS ACOUSTIC WINDOWS**

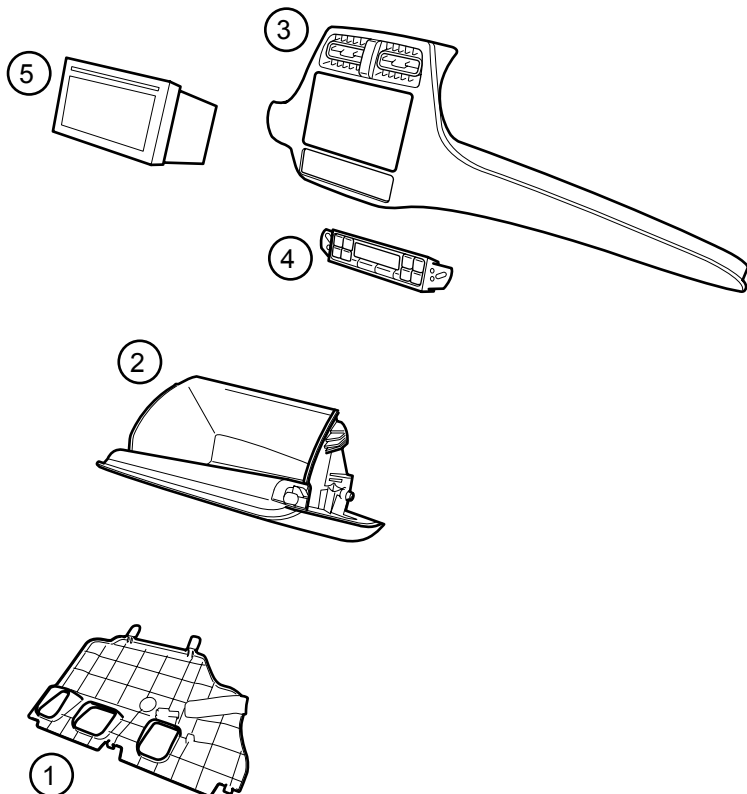
You will need to use sections highlighted in YELLOW for this Vehicle.



**THIS VEHICLE HAS UV WINDOWS**

You will need to use sections highlighted in BLUE for this Vehicle.



[illegible]

Disconnect all Corresponding Connectors.



- a. Place the Vehicle in Park with the Parking Brake set. (Fig. 1-1)
- b. Disconnect the Negative Battery Terminal. (Fig. 1-1)
  - Note the Battery Cable Position as it will be re-installed in the same position.



**CAUTION:** Do not touch the Positive Terminal. (Fig. 1-1)



**NOTE:** Ensure all disassembled Vehicle Parts are thoroughly inspected. (Fig. 1-1)







- e. Remove the Center Sub Cluster Panel. (Fig. 2-4)
  - Remove 2 Screws.
- f. Carefully remove the Vehicle Harness Clip as shown. (Fig. 2-4)



**NOTE:** Ensure all disassembled Panel connectors are carefully disconnected. (Fig. 2-4)

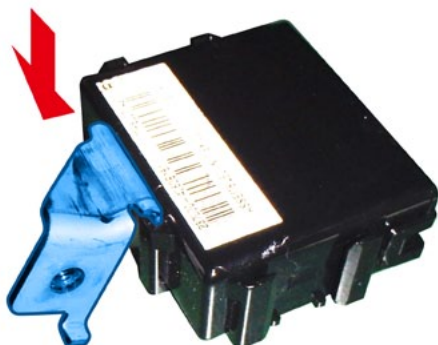
- g. Remove the Audio Unit. (Fig. 2-5)
  - Remove 4 Bolts.



**NOTE:** Disconnect all connectors, except the connectors shown. (Fig. 2-5)



Fig. 3-1



### 3. GBS ECU & V5 Harness Preparation and Installation.



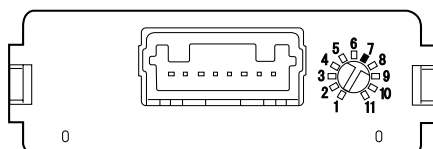
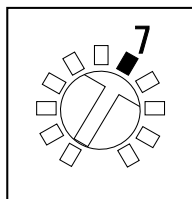
**NOTE:** Ensure all Kit Parts are thoroughly inspected before installation. (Fig. 3-1)

- a. Attach GBS ECU Bracket to the GBS ECU as shown. (Fig. 3-1)



Flatblade Jeweler's Screwdriver

Fig. 3-2



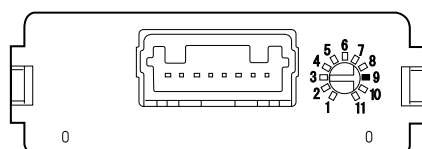
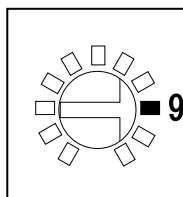
### Vehicles with UV windows ONLY

- b. Set the GBS Sensitivity Value to 7. (Fig. 3-2)



Flatblade Jeweler's Screwdriver

Fig. 3-3



### Vehicles with Acoustic windows ONLY

- c. Set the GBS Sensitivity Value to "9". (Fig. 3-3)



- d. Secure the V5 Harness to the Vehicle Reinforcement using 1 Wire Tie. (Fig. 3-4)

- e. Secure the V5 Harness to the Vehicle Harness using 1 Wire Tie. (Fig. 3-5)
- f. Secure the V5 Harness to the HVAC Unit using 1 Wire Tie. (Fig. 3-5)

- g. Plug the V5 8P White Connector to the GBS ECU. (Fig. 3-6)



- h. Place the GBS ECU on the Vehicle Brace in the Glove Box Area. (Fig. 3-7)
- i. Install the GBS ECU using the supplied Bolt. (Fig. 3-7)

**Torque: 8 N•m (71 in•lbf)**



**NOTE:** Make sure the Guide Pin is seated correctly and verify that the Bolt is tightened securely. (Fig. 3-7)

- j. Route the V5 Harness toward the Audio Unit area. (Fig. 3-7)

- k. Route the V5 Harness toward the Audio Unit area and behind the Vehicle Harness. (Fig. 3-8)

- l. Continue to route the V5 Harness upward and toward the Audio Unit area and behind the Vehicle Harness. (Fig. 3-9)



- m. Plug in the V5 2P Connector to the Vehicle's 2P Connector. (Fig. 3-10)

- n. Disconnect the Vehicle's Glove Box Lamp 2P Connector. (Fig. 3-11)



**CAUTION:** Do not pull the 2P Connector's Harness. (Fig. 3-11)

- o. Plug in the V5 2P Connector to the Vehicle's Glove Box Lamp 2P Connector. (Fig. 3-12)



- p. Plug in the V5 2P Connector to the Vehicle's Glove Box Lamp 2P Connector. (Fig. 3-13)

- q. Cut out one short Quarter piece from the Vinyl Sheet. (Fig. 3-14)
- r. Cut out one long Quarter piece out from the remaining Vinyl Sheet as shown. (Fig. 3-14)

- s. Wrap the V5 Harness using the short Quarter piece of Vinyl Sheet as shown. (Fig. 3-15)
- t. Secure the V5 Harness to the Vehicle Reinforcement using 1 Wire Tie. (Fig. 3-15)
- u. Secure the V5 2P Connector to the Vehicle's Reinforcement using 1 Wire Tie. (Fig. 3-15)



**CAUTION:** Avoid strain on the 2P Connector's Harness. (Fig. 3-15)



- v. Secure the V5 Harness in the Audio Unit area to the Vehicle Harness using 1 Wire Tie. (Fig. 3-16)

- w. Secure the V5 Harness to the Vehicle Harness towards the Driver Side Using 1 Wire Tie. (Fig. 3-17)



**CAUTION:** Avoid contact between the V5 Harness and all surrounding Sharp Clip edges. (Fig. 3-17)

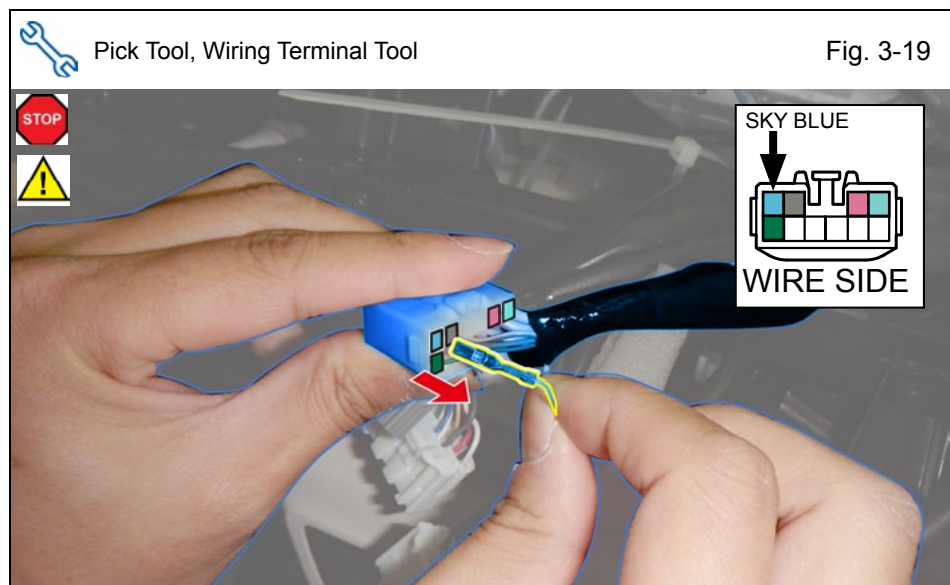


**NOTE:** Do not secure the surrounding 2P Connector wires. (Fig. 3-17)

- x. Secure the V5 Harness to the air conditioner unit using 1 Wire Tie. (Fig. 3-17)

- y. Secure the V5 Harness to the air conditioner unit using 1 Wire Tie. (Fig. 3-18)
- z. Secure the V5 Harness to the Vehicle Harness using 1 Wire Tie. (Fig. 3-18)





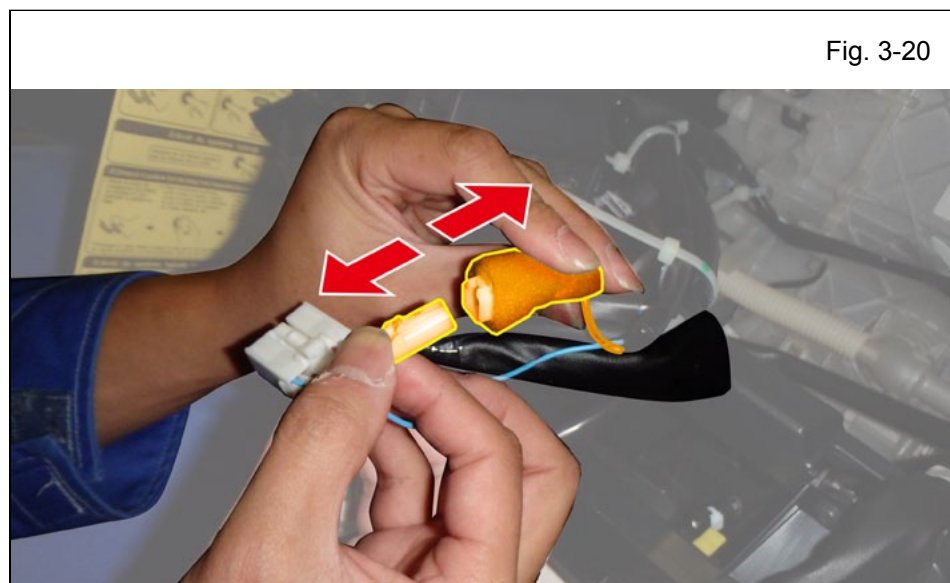
aa. Pull out the Vehicle's Sky Blue Wire Terminal from the indicated location on the 10P Vehicle Connector. (Fig. 3-19)



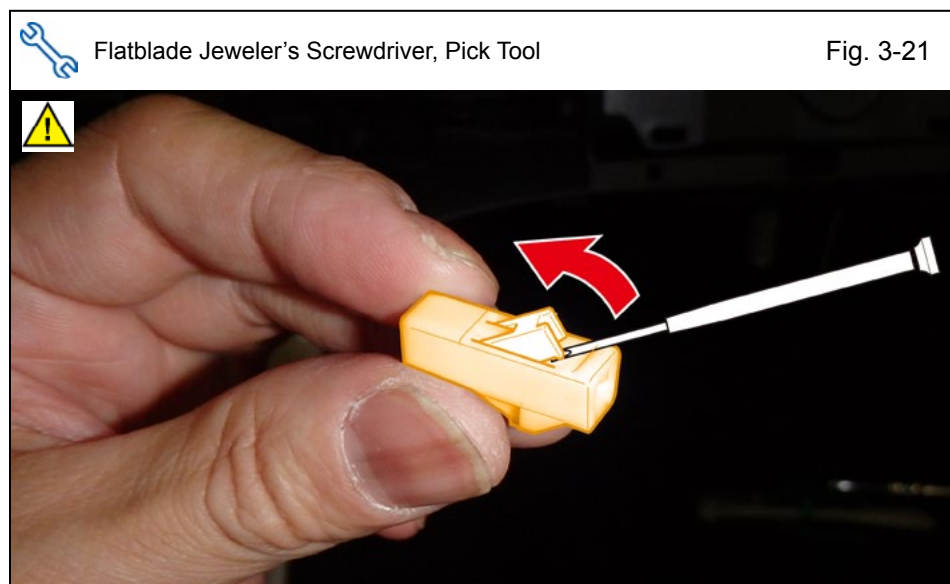
**CAUTION:** Do not pull out the White and Blue Wire Terminal on the opposite side of the connector. (Fig. 3-19)



**CAUTION:** Using a pick tool or wiring terminal tool, release and pull out the terminal. (Fig. 3-19)



ab. Disconnect the V5 White 1P Connector from the V5 White 1P Connector. (Fig. 3-20)



ac. Lift the Terminal Retainer Clip. (Fig. 3-21)



**CAUTION:** Do not pull out the Retainer Clip. (Fig. 3-21)



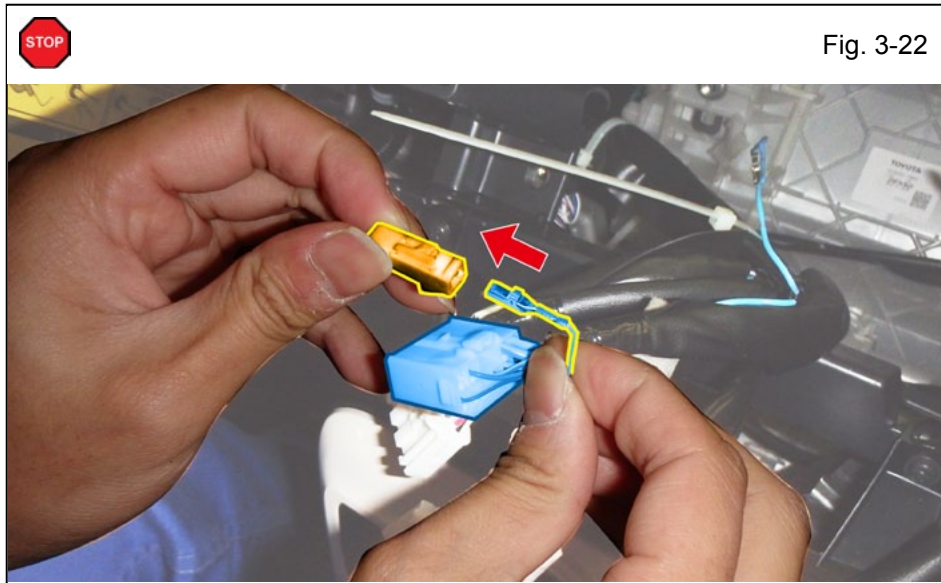


Fig. 3-22

ad. Insert the Vehicle's Sky Blue Wire Terminal into the V5 1P Connector. (Fig. 3-22)



**VERIFY:** Terminal Pins are properly inserted and do not come out. (Fig. 3-22)

ae. Close the Terminal Retainer Clip. (Fig. 3-22)

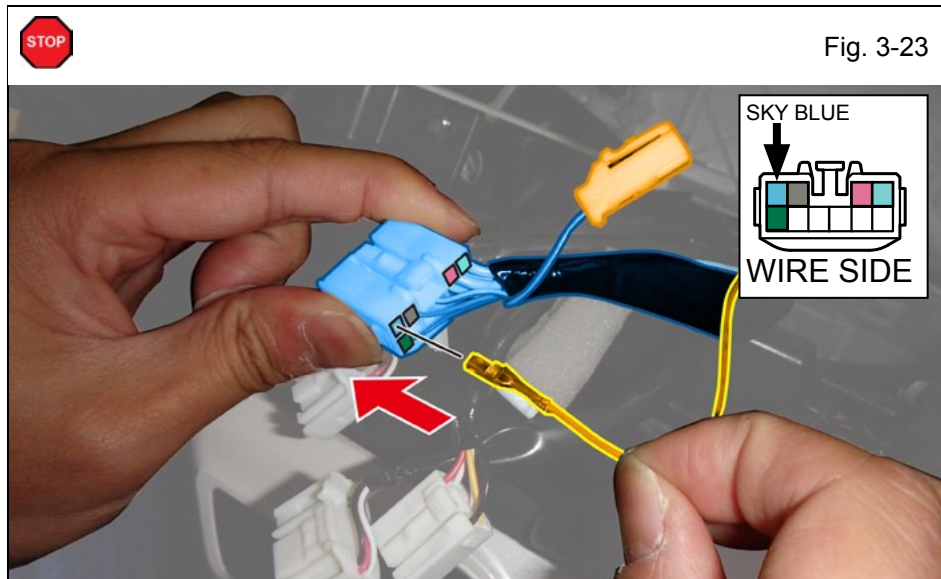


Fig. 3-23

af. Insert the V5 Sky Blue Wire Terminal into the indicated location on the 10P Vehicle Connector. (Fig. 3-23)



**CAUTION:** Do not insert the V5 Sky Blue Terminal into the White and Blue Wire Terminal on the opposite side of the connector. (Fig. 3-23)



**VERIFY:** Terminal Pins are properly inserted and do not come out. (Fig. 3-23)

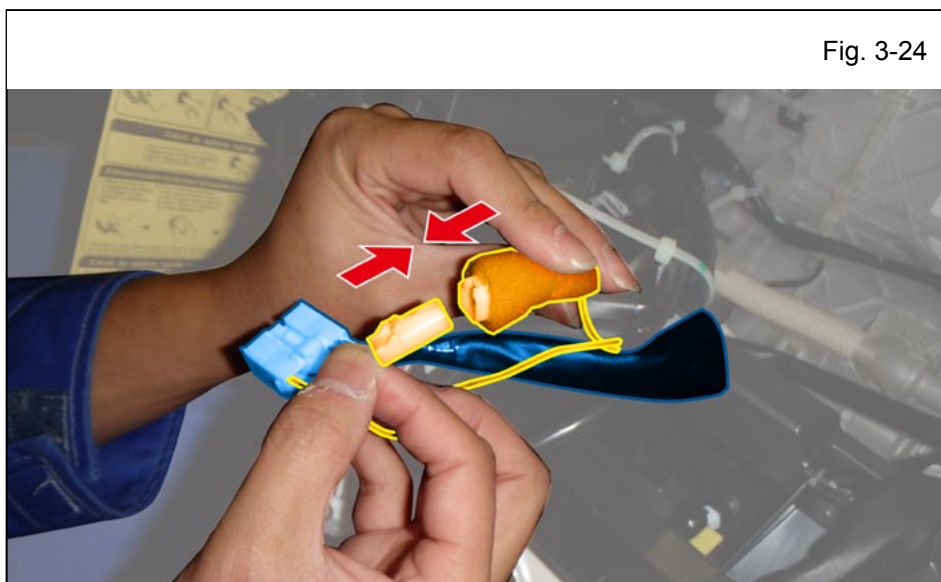


Fig. 3-24

ag. Connect the V5 White 1P Connector to the V5 White 1P Connector. (Fig. 3-24)



- ah. Wrap the V5 Harness and V5 1P Connectors using the long Quarter piece of Vinyl Sheet as shown. (Fig. 3-25)
- ai. Secure the long Quarter piece of Vinyl Sheet to the V5 harness using Electrical Tape as shown. (Fig. 3-25)



**CAUTION:** Ensure all bare wire and V5 1P Connectors are secured within the Vinyl Sheet and Electrical Tape. (Fig. 3-25)

- aj. Secure the V5 Harness to the Vehicle Harness using 1 Wire Tie. (Fig. 3-25)
- ak. Secure the Vinyl Sheet wrapped V5 Connectors to the Vehicle Harness using 1 Wire Tie. (Fig. 3-25)
- al. Route the V5 Harness behind then over the Vehicle's Dashboard. (Fig. 3-26)

- am. Secure the V5 Harness to the air conditioner unit using 2 Wire Ties as shown. (Fig. 3-27)
- an. Secure the V5 Harness to the Vehicle Harness using 1 Wire Tie. (Fig. 3-27)







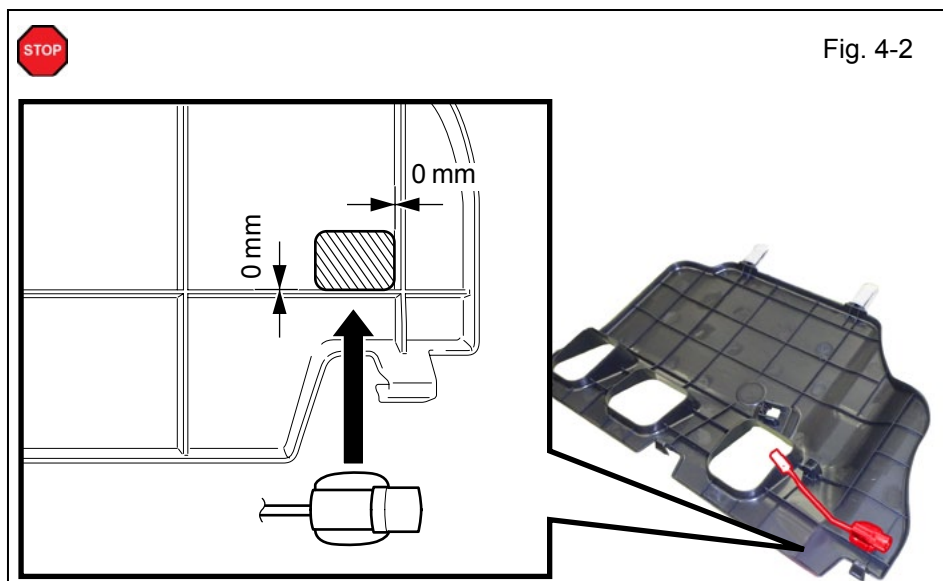


Fig. 4-2

**Vehicles with UV windows  
ONLY**

- b. Using the VDC approved cleaner and Cleaning Method, clean the area indicated on the backside of the Glove Box Under Cover. (Fig. 4-2)
- c. Attach the GBS Microphone to the backside of the Glove Box Under Cover as shown. (Fig. 4-2)



**NOTE:** Make sure to align GBS Microphone to the Glove Box Under Cover. (Fig. 4-2)

- d. Cut Foam Tape in half. (Fig. 4-3)

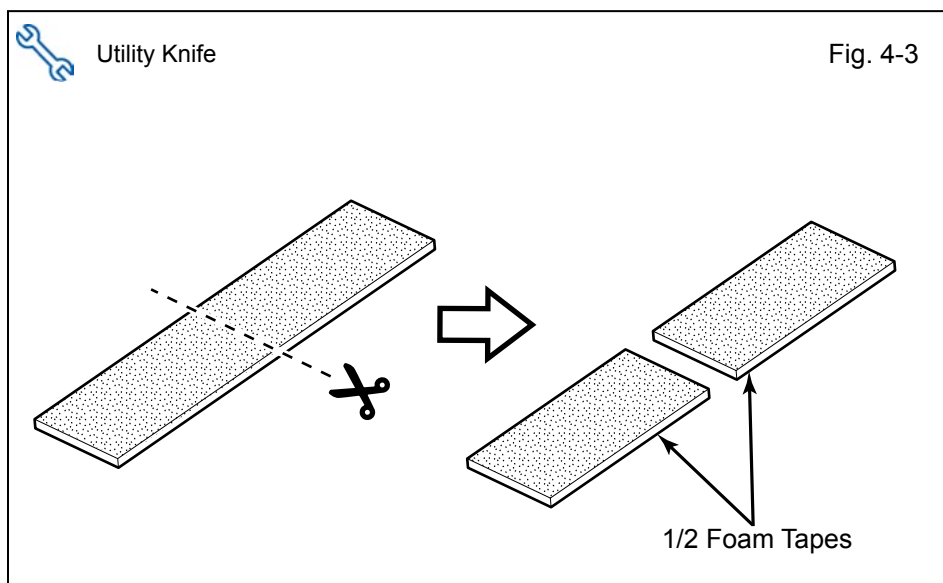


Fig. 4-3

- e. Apply both of the 1/2 Foam Tapes to the GBS Microphone as shown. (Fig. 4-4)



**NOTE:** Do not cover the Microphone opening with the Foam Tape. (Fig. 4-4)



**NOTE:** Do not cover the Clip with the Foam Tape. (Fig. 4-4)

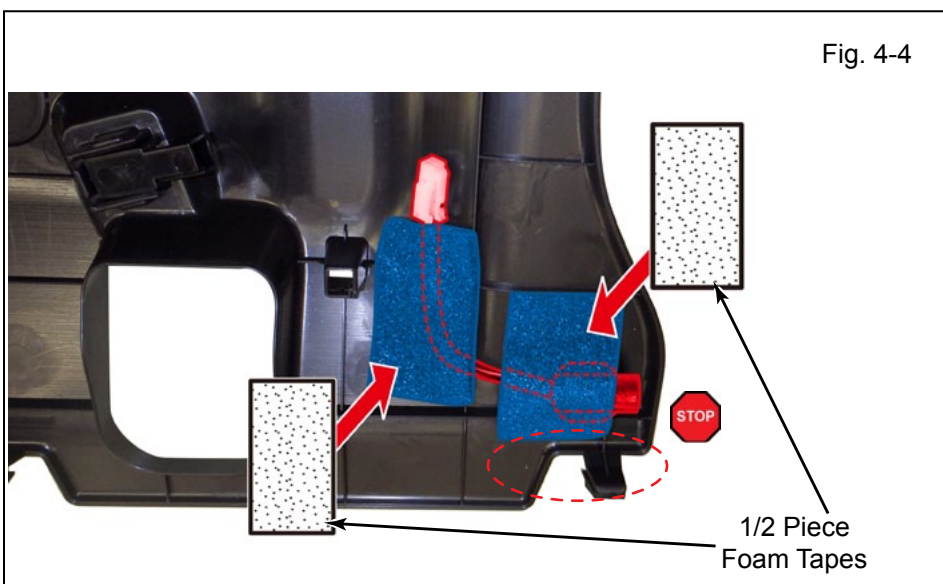


Fig. 4-4



- f. Connect the Microphone's 2P Connector to the V5 2P Connector. (Fig. 4-5)
- g. Reinstall the Glove Box Under Cover. (Fig. 4-5)

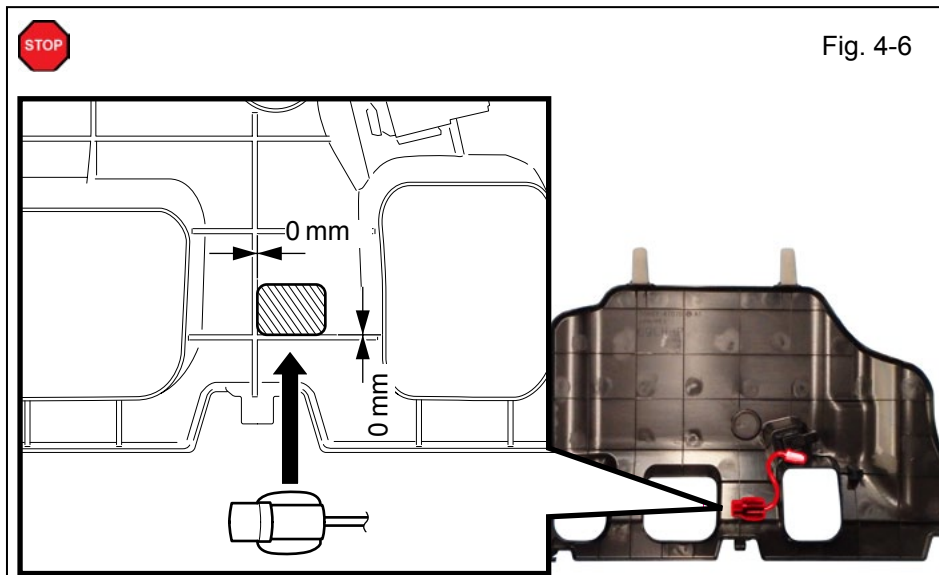


Fig. 4-6

**Vehicles with Acoustic windows ONLY**

- h. Using the VDC approved cleaner and Cleaning Method, clean the area indicated on the backside of the Glove Box Under Cover.(Fig. 4-6)
- i. Attach the GBS Microphone to the backside of the Glove Box Under Cover as shown. (Fig. 4-6)

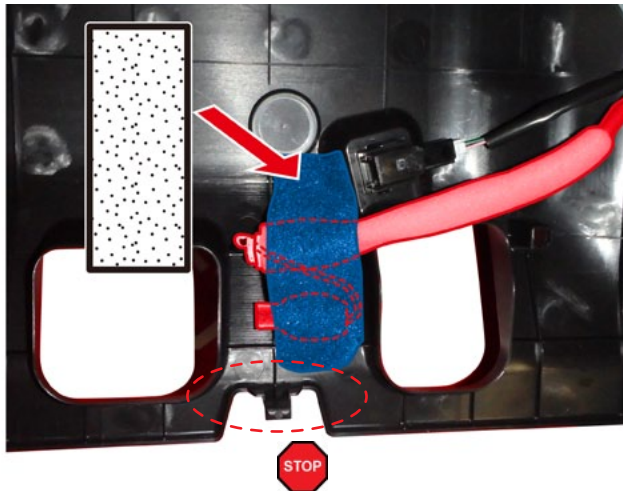


**NOTE:** Make sure to align GBS Microphone to the Glove Box Under Cover. (Fig. 4-6)

- j. Connect the Microphone's 2P Connector to the V5 2P Connector. (Fig. 4-7)



Fig. 4-8



- k. Apply 1 Foam Tape to the GBS Microphone as shown. (Fig. 4-8)



**NOTE:** Do not cover the Microphone opening with the Foam Tape. (Fig. 4-8)



**NOTE:** Do not cover the Clip with the Foam Tape. (Fig. 4-8)

- l. Reinstall the Glove Box Under Cover. (Fig. 4-8)

## 5. Registration.

- a. Verify that the D/C Cut Fuse is Installed. (Fig. 5-1)
- If not Install now

- a. Temporarily reconnect the Negative Battery Cable. (Fig. 5-2)



**CAUTION:** Do not touch the positive Terminal. (Fig. 5-2)



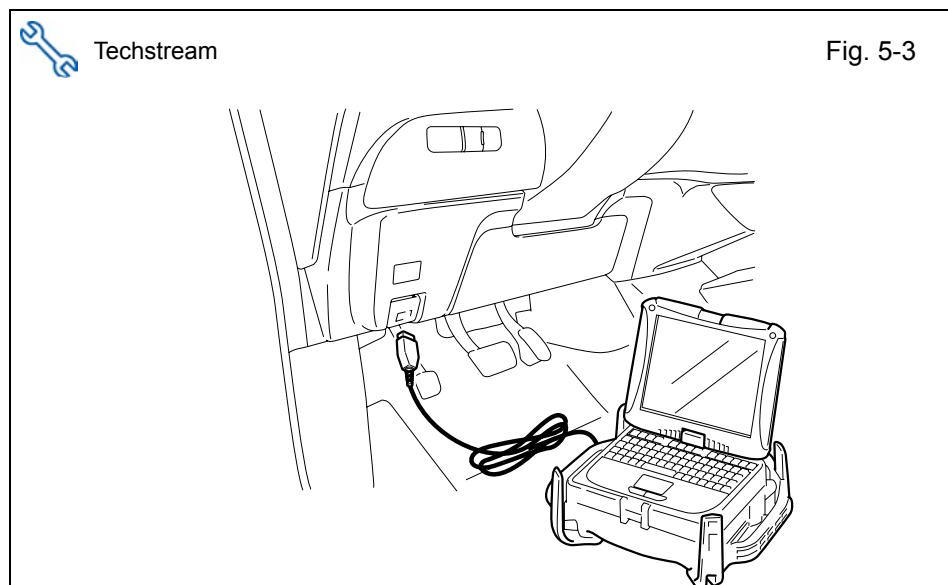


Fig. 5-3

- b. Connect the Techstream Notebook to the Vehicle's Diagnostic Port. (Fig. 5-3)
- c. With the Smart Key in your possession, press the Power Button twice to select the Ignition "ON" position. (Fig. 5-3)

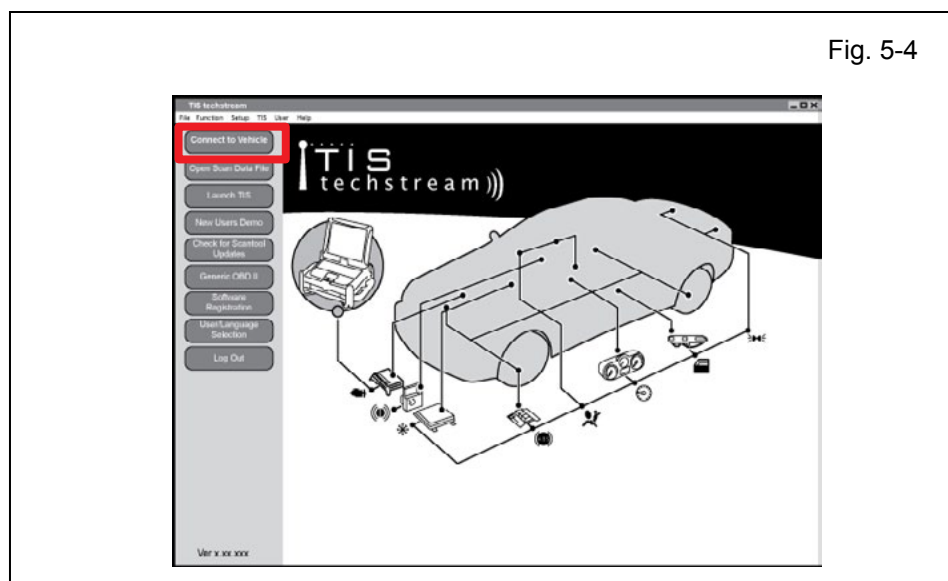


Fig. 5-4

- d. Start the TIS Techstream Application by clicking on the shortcut located on the Desktop. (Fig. 5-4)
- e. Click "Connect to Vehicle". (Fig. 5-4)

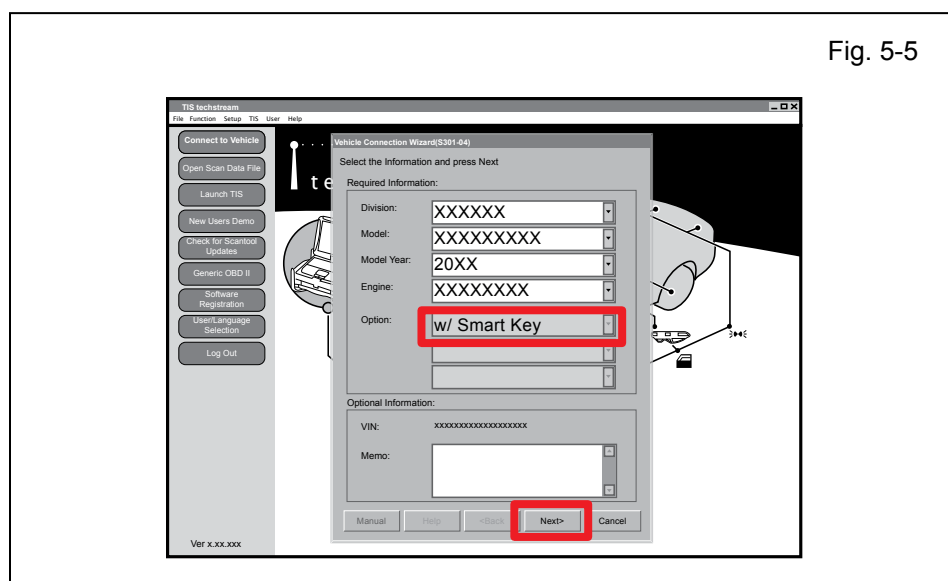
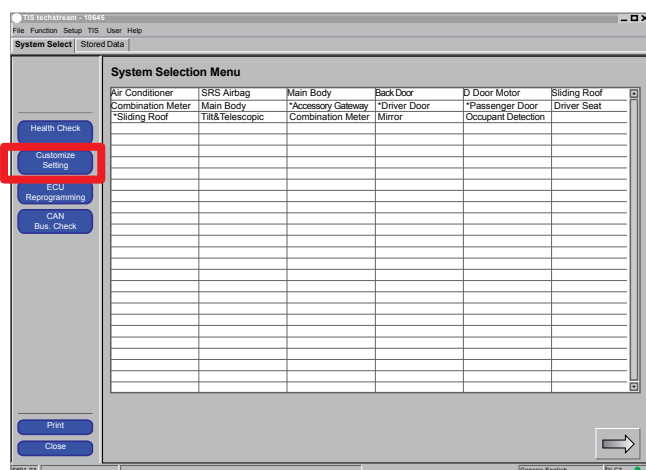


Fig. 5-5

- f. Confirm that the information displayed on the Vehicle Connection Wizard is correct for the vehicle. If not, verify that the Techstream is properly connected. (Fig. 5-5)
- g. Select any additional "Option" items that are applicable to the vehicle. (Fig. 5-5)
- h. Click "Next>". (Fig. 5-5)

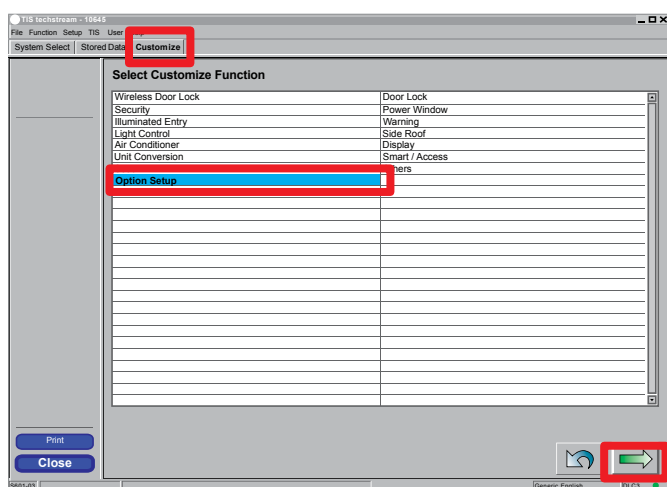


Fig. 5-6



- i. Click "Customize Setting".  
(Fig. 5-6)

Fig. 5-7




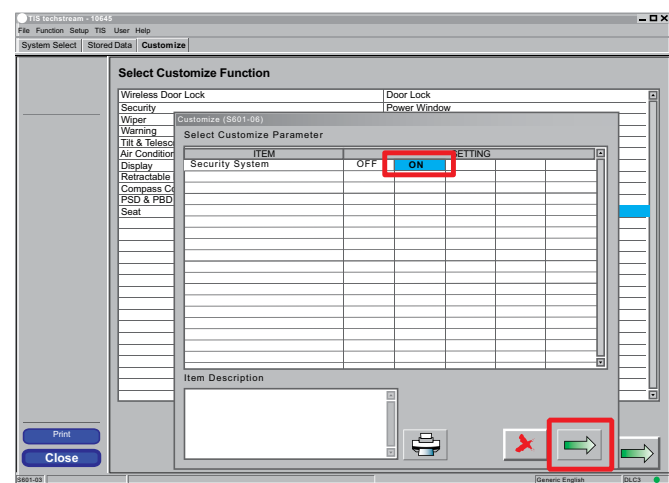
- j. Make sure that the "Customize" tab is selected.  
(Fig. 5-7)
- k. Select "Option Setup".  
(Fig. 5-7)
- l. Click . (Fig. 5-7)

Fig. 5-8




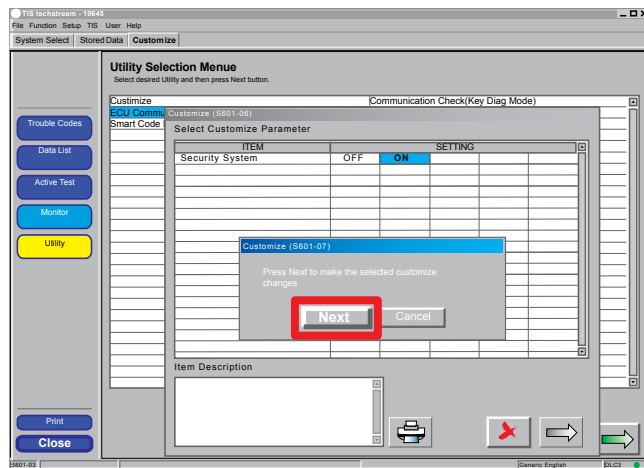
- m. Select "ON". (Fig. 5-8)
- n. Click . (Fig. 5-8)

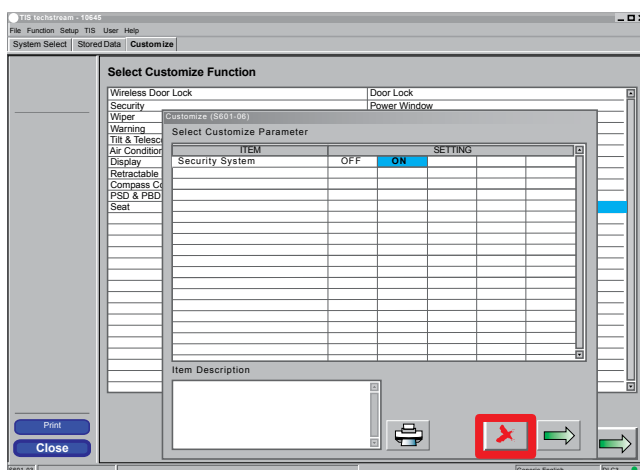


Fig. 5-9



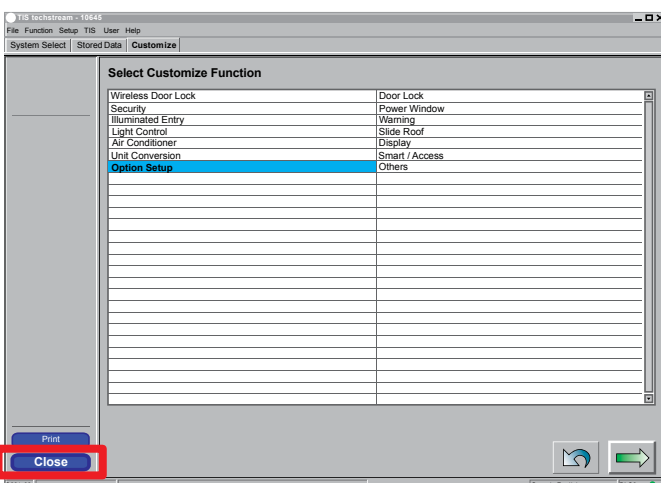
- o. Click “Next” to accept the changes to the Vehicle. (Fig. 5-9)

Fig. 5-10



- p. Click  (Fig. 5-10).

Fig. 5-11



- q. Click “Close”. (Fig. 5-11)



## 6. Window Label Installation.

- For US Vehicles use the English Tags and Labels, and discard the Spanish Tags and Labels. (Fig. 6-1)
- For Mexico Vehicles use the Spanish Tags and Labels, and discard the English Tags and Labels. (Fig. 6-1)
- a. Use VDC Approved Cleaner to clean the inside of the Front Door Window. (Fig. 6-1)
- b. Use a piece of Clear Tape to lift the Label off its protective backing. (Fig. 6-1)



**CAUTION:** Do not touch the adhesive surface. (Fig. 6-1)

- c. Attach the Label as shown.



**NOTE:** Make sure to align the Label according to Etching or other Label. (Fig. 6-1)

**REPEAT:** Steps a-c with the other Window. (Fig. 6-1)

## 7. Complete the Installation.

- a. Position the Negative Battery Cable at the original factory position. (Fig. 7-1)



**Torque: 5.4 N•m (48 in•lbf)**



**CAUTION:** Do not touch the Positive Terminal. (Fig. 7-1)

- b. Clean up and remove trash. (Fig. 7-1)
- c. Sealed in its protective bag, place the Owner's Guide in the Glove Box. (Fig. 7-1)





**Accessory Function Checks**

Roll up all windows, and exit the vehicle with the remote.

	Perform	Look For
1	Press and release the remote control lock button to start the system's arming process.	The turn signal lights flash once. All doors lock. The security LED lights up.
2	Wait 30 seconds.	Security LED starts flashing; the system is now armed.
3	Press and release the remote control's unlock button to disarm the system.	The turn signal lights flash twice. The driver's door unlocks. The Security LED stops flashing.

**Open the driver's door, with the smart key in your possession, press the power button to "ON." Roll down all the windows, remove the key and exit the vehicle.**

4	Arm and disarm the system with the remote again, then wait 30 seconds.	The doors automatically relock. The system automatically starts the arming process.
5	Press and release the remote control's unlock button again to stop the arming process.	Refer to step 3
6	Press the lock button on the driver's exterior door handle to start the arming process.	All doors lock. The Security LED lights up.
7	Wait 30 seconds.	Security LED starts flashing; the system is now armed.
8	Reach inside and manually unlock the driver's door to trigger an alarm.	The driver's door automatically relocks. The horn sounds repeatedly. The headlights flash repeatedly. The turn signal lights flash repeatedly. The Security LED lights up.
9	Manually unlock the driver's door again and hold it unlocked, open the door, then sit in the driver's seat.	The driver's door lock attempts to lock repeatedly. The horn continues to sound repeatedly. The headlights and turn signal lights continue flashing. The Security LED remains on.
10	The smart key in your possession, press the power button twice to "START" to stop the alarm.	The horn stops sounding. All the lights stop flashing and/or turn off. The Security LED turns off. The starter cranks and the engine starts.

**Press the power button to turn the vehicle off, and then exit the vehicle.**

11	With the door open, press the lock switch on the door to lock the doors, then close the door to start the system's arming process.	All doors lock. The Security LED lights up.
12	Wait 30 seconds.	Security LED starts flashing; the system is now armed.
13	Reach inside and manually unlock the front passenger's door to trigger an alarm.	The front passenger's door automatically relocks. The horn sounds repeatedly. The headlights flash repeatedly. The turn signal lights flash repeatedly. The SECURITY LED lights up.



CHECKLIST – these points **MUST** be checked to ensure a quality installation.

14	Press and release the remote control's unlock button to stop the alarm.	The horn stops sounding. All the lights stop flashing. The Security LED stops flashing.
15	Press and release the remote control's lock button to start the system's arming process, then wait 30 seconds until the system is armed.	Refer to steps 1 and 2.
16	Unlock and open one of the rear passenger doors to trigger an alarm. (if available).	Refer to step 13.
17	Press and release the remote control's unlock button to stop the alarm.	Refer to Step 14
18	Repeat the above steps with the other rear passenger door. (if available).	Refer to steps 1, 2, and 13.

**For Vehicles with UV Glass. (For Vehicles with Acoustic Glass, Skip to Steps 23 - 26)****Roll up all windows, remove the key and exit the vehicle.****Take the Smart Key from the Vehicle and place them 15 ft. (4.5 meters) or more away from the Vehicle.**

19	Press and release the remote control's lock button to start the arming process.	Refer to step 1.
20	Wait 30 seconds.	After 30 seconds, the Security LED starts flashing; the system is now armed.

**Perform the following check in a temperature-controlled environment. (50° - 90° F)**

21	With the tip of a key, or Striker Tool pulled all the way out (PPO only), tap the center of the driver's door window to trigger the alarm.	The horn sounds repeatedly. The headlights flash repeatedly. The turn signal lights flash repeatedly. The Security LED lights up.
22	Insert the key into the driver's door key cylinder and turn it toward the back of the vehicle to stop the alarm.	Refer to Step 14

**Skip to Vehicle Function Checks. (See Page 27)****For Vehicles with Acoustic Glass.**

This procedure will require an assistant. With the installer inside the vehicle, roll up all windows.

**Take out the Smart Key and the Smart Card Key from the Vehicle. Place them 15 feet (4.5 meters) or more away from the Vehicle.**

Perform		Look For
23	Have assistant lock the doors with installer inside of the Vehicle, then start the system's arming process.	The turn signal lights flash once. All doors lock. The Security LED lights up.
24	Wait 30 seconds.	Security LED starts flashing; the system is now armed.

Perform the following check in a temperature controlled environment (50° - 90° F)



CHECKLIST – these points **MUST** be checked to ensure a quality installation.

25	With the tip of a key, or Striker Tool pulled all the way out (PPO only), have installer tap the center of the driver's door window from the inside to trigger the alarm.	The horn sounds repeatedly. The headlights flash repeatedly. The turn signal lights flash repeatedly. The Security LED lights up.
26	Assistant must insert the key into the driver's door key cylinder and turn it toward the back of the vehicle to stop the alarm.	The horn stops sounding. All the lights stop flashing and/ or turn off. The Security LED lights up.



**NOTE:** If the alarm does not trigger during functional verifications the Smart Key and Smart Card Key might be too close. Move them farther from the vehicle and test the system again.

**NOTE:** If the alarm still does not trigger during the section test, increase the GBS sensitivity to the next setting and test again.

**NOTE:** If you do not disarm the system, the alarm will last 20 seconds. It is not necessary to check the alarm duration.









### Vehicle Function Checks

Function	Function
----------	----------

#### Enter the Vehicle

<input type="checkbox"/> Dome/Courtesy Lights	<input type="checkbox"/> Illuminated Door Sills (If Equipped)
---	---

#### Start the Vehicle

<input type="checkbox"/> Panel/Switch Illumination	<input type="checkbox"/> Gauges
<input type="checkbox"/> Check Engine Light <i>If the warning light remains on, it may indicate a system malfunction.</i> 	<input type="checkbox"/> ABS Light (if equipped) <i>If the warning light remains on, it may indicate a system malfunction.</i> 
<input type="checkbox"/> Lamp Failure Sensor <i>If the warning light remains on, it may indicate a system malfunction.</i> 	<input type="checkbox"/> Track/Skid Control Light (if equipped) <i>If the warning light remains on, it may indicate a system malfunction.</i> 
<input type="checkbox"/> Seat Belt Warning Light <i>If the warning light remains on, it may indicate a system malfunction.</i> 	<input type="checkbox"/> Tire Pressure Monitoring System (TPMS).  <i>Prior to TPMS activation and Pre-delivery Service (PDS) of the Vehicle the TPMS light will blink when IG is turned on.</i>  <i>After TPMS activation and PDS of the Vehicle the TPMS light will illuminate for a few seconds and go off when IG is turned on.</i> 
<input type="checkbox"/> Air Bag Warning Light <i>If the warning light remains on, it may indicate a system malfunction.</i> 	
<input type="checkbox"/> Cruise Control Light (if equipped) 	

#### Using a Mirror or Assistant check the following.

<input type="checkbox"/> Trunk/Tailgate/Bed Lights (if equipped)	<input type="checkbox"/> Tail Lights
<input type="checkbox"/> Brake Lights	<input type="checkbox"/> Daytime Running Lights (if equipped)



CHECKLIST – these points **MUST** be checked to ensure a quality installation.

<input type="checkbox"/>	Backup Lights	<input type="checkbox"/>	Marker Lights
<input type="checkbox"/>	Clearance Sonar (if equipped)		

**Stop the Engine, Place the Vehicle's IG in the ON position.**

<input type="checkbox"/>	Hazard Lights	<input type="checkbox"/>	Turn Signal Lights
<input type="checkbox"/>	Head Light	<input type="checkbox"/>	Fog Lights (if equipped)
<input type="checkbox"/>	High Beams	<input type="checkbox"/>	Accessory Controls/Illumination (if equipped)
<input type="checkbox"/>	Power Side Mirrors (if equipped)	<input type="checkbox"/>	Convenience Memory Settings (if equipped)
<input type="checkbox"/>	Horn	<input type="checkbox"/>	Rear Wiper/Washer (if equipped)
<input type="checkbox"/>	Front Wiper/Washer	<input type="checkbox"/>	Rollover Side Curtain Air Bag Switch (RSCA) (if equipped)
<input type="checkbox"/>	Power Sun/Moon Roof (if equipped)	<input type="checkbox"/>	Navigation System (if equipped)
<input type="checkbox"/>	Clock (if equipped)	<input type="checkbox"/>	HVAC
<input type="checkbox"/>	Audio/Video (if equipped)	<input type="checkbox"/>	Rear Window Defogger (if equipped)
<input type="checkbox"/>	Steering Wheel Audio Control (if equipped)	<input type="checkbox"/>	Accessory Power Socket (if equipped)
<input type="checkbox"/>	Front Windshield Defogger (if equipped)	<input type="checkbox"/>	Heated/Vented Seats (if equipped)
<input type="checkbox"/>	Side Mirror Defogger (if equipped)		

<input type="checkbox"/>	Glove Box Light (if equipped)	<input type="checkbox"/>	Glove Box Undercover Light
--------------------------	-------------------------------	--------------------------	----------------------------

<input type="checkbox"/>	Power Locks (if equipped)	<input type="checkbox"/>	Power Windows (if equipped)
<input type="checkbox"/>	Power Seats (if equipped)	<input type="checkbox"/>	Key Sensor Buzzer

**Vehicle Appearance Check**

Perform		Look For
<input type="checkbox"/>	After accessory installation and removal of protective cover(s), perform a visual inspection of the vehicle.	Ensure no damage (including scuffs and scratches) was caused during the installation process.  (For PPO installations, refer to TMS Accessory Quality Shipping Standard.)



CHECKLIST – these points **MUST** be checked to ensure a quality installation.

**Remove the D/C Cut Fuse after Function check.**

Check with your Port/Dealer to see if this step is necessary.

