

Part Number: 00016-74100

Accessory Code: YF20



**CONFLICTS**

NONE
------

**Kit Contents**

Item #	Quantity Reqd.	Description
1	2	Fog Lamps
2	2	Fog Lamp's bezels
3	1	Switch Assembly
4	1	Hardware bag

**Hardware Bag Contents**

Item #	Quantity Reqd.	Description
1	1	Switch harness
2	1	SPST Relay
3	15	Wire ties
4	2	Phillip head screws

**Additional Items Required For Installation**

Item #	Quantity Reqd.	Description

**Recommended Tools**

<b>Safety Tools</b>	
Safety Glasses	
Electrical Tape	
<b>Installation Tools</b>	
10mm Wrench	
Phillips Screw Driver	
Pliers	
Side Cutters	
<b>Special Chemicals</b>	

**Color Applicability/Trim Level**

Service Part Part Number	Fog Light Housing LH	Fog Light Housing RH	Switch	Relay	Bezel LH	Bezel RH
00016-08401-04	X					
00016-08401-03		X				
00016-79417-05			X			
00016-79417-04				X		
00016-74100-02					X	
00016-74100-01						X

**General Applicability**

--

**Recommended Sequence of Application**

Item #	Accessory
1	
2	
3	

**Mandatory**

**Legend**

**STOP:** Damage to the vehicle may occur. Do not proceed until process has been complied with.

**OPERATOR SAFETY:** Use caution to avoid risk of injury

**CRITICAL PROCESS:** Proceed with caution to ensure a quality installation. These points will be audited on a completed vehicle installation

**TOOLS & EQUIPMENT:** This calls out the specific tools and equipment required for this process

**REVISION MARK:** This mark highlights a change in installation with respect to previous issue.


**SPECIAL NOTE:**  
After **TMS** and **Safety** mandated preparatory steps have been taken, the installation sequence is the suggested method for completing the accessory installation. In some instances the suggested sequence is written for one associate to install and in others the sequence is given as part of a team accessory installation. Unless otherwise stated in the document, the associates may perform the installation steps in any order to make the installation as efficient as possible while maintaining consistent quality. Also some items listed to be removed may not need to be removed if caution is taken to not damage vehicle.

Care must be taken when installing this accessory to ensure damage does not occur to the vehicle. The installation of this accessory should follow approved guidelines to ensure quality installation. These guidelines can be found in the Accessory Installation Practices document.

This document covers such items as:

- Vehicle Protection (use of covers and blankets, cleaning chemicals, etc)
- Safety (eye protection)
- Vehicle Disassembly / Reassembly (panel removal, part storage, etc)

## Preparation

 Remove negative battery cable

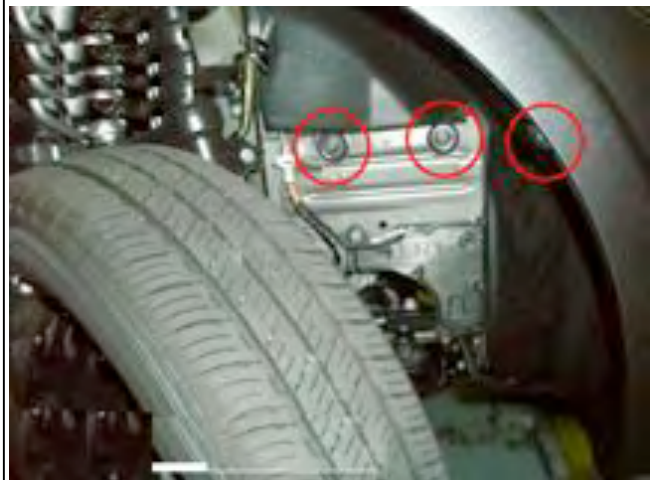
## Vehicle Disassembly

1. Remove screw from fender liner (picture 1).



Picture 1

2. Remove fasteners inside fender liner (picture 2)



Picture 2

3. Repeat steps 1 and 2 on both sides of vehicle

4. Remove existing fog light cover on both sides (picture 3)



Picture 3

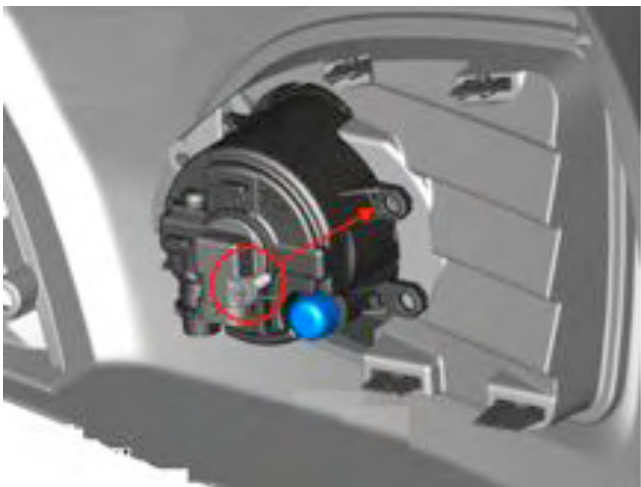
**Installation**

- 5. Locate the existing fog light harness, and connect to fog light (picture 4)



Picture 4

- 6. Lamps are marked for installation on the left or right side of vehicle. From behind, install fog lamp into bumper and secure with supplied screws (picture 5)



Picture 5

- 7. Snap on the both fog light bezel (picture 6)



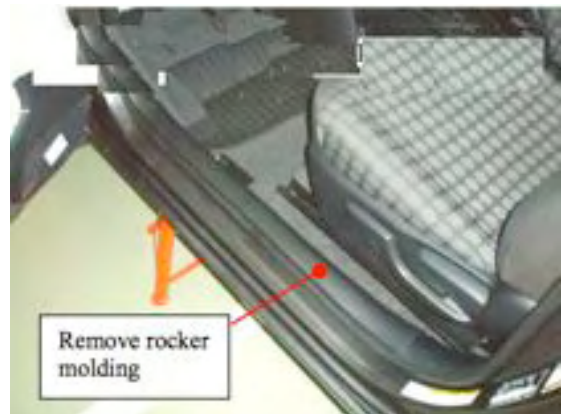
Picture 6

- 8. Reinstall fender liners

**RELAY INSTALLATION**

*Optional Step:*

- 9. Remove rocker panel (picture 7)



Picture 7

*Optional Step:*

- 10. Remove side-kick panel (picture 8)



Picture 8

*Optional Step:*

- 11. Remove lower instrument panel by removing two screws and pulling cover off (picture 9)

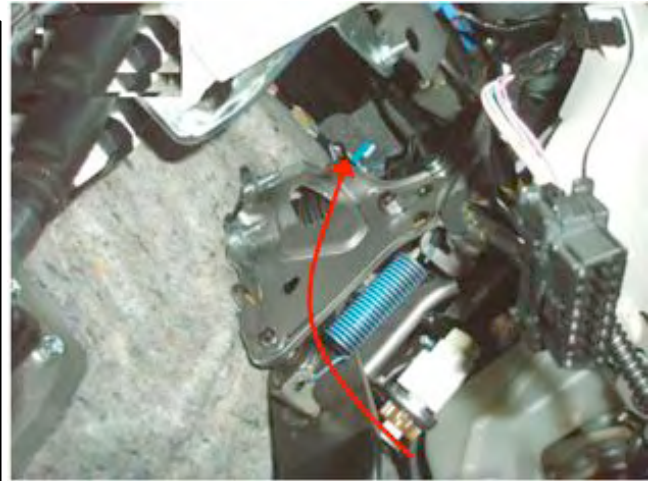


Picture 9

- 12. Look up under instrument panel from left (pictures 10A ~ 10C)



Picture 10A



Picture 10B



Picture 10C

- 13. Locate the gray receptacle. Plug relay into top of this receptacle (light blue object, picture 11)

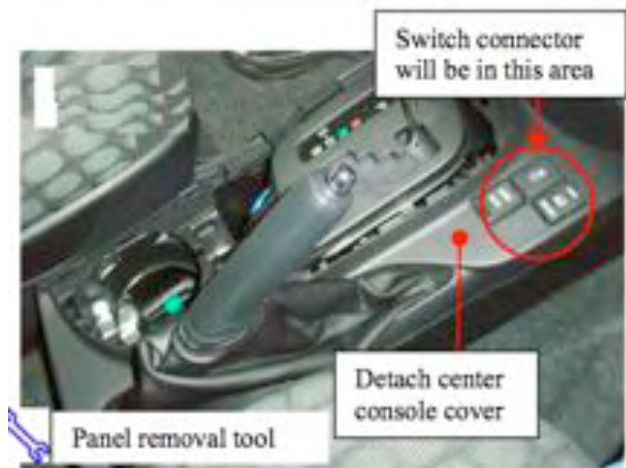


Picture 11

14. Reinstall all panels

SWITCH INSTALLATION

15. Detach center console cover (picture 12)



Picture 12

16. Remove switch knock-out from console panel (picture 13)



Picture 13

17. Locate the existing factory wire harness (picture 14)



Picture 14

18. Connect the switch wire harness adapter and then connect switch (pictures 15 & 16)



Picture 15

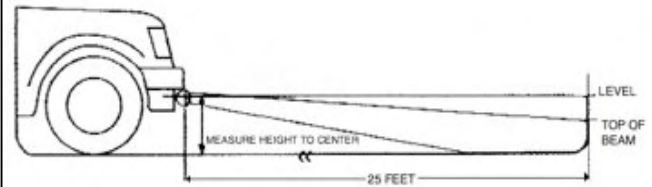


Picture 16

19. Reinstall center console panels

20. Reconnect negative cable of battery to the negative terminal of battery. Torque to 48 in-lbs

Visual aim is made with the top of the beam 4 inches below the lamp center at 25 feet with the lamp facing straight forward (see picture 24)



## Check System for Operation

1. Check that battery is connected
2. Turn on headlamp low beams, then press fog light switch to "ON" position. Fog lights should be working. Fog lights will only work when the low beam headlamps are "ON". Fog lights will NOT work when the high beam headlamps are "ON"

## Fog Light Aiming

Traditional fog lights are usually mounted in the front bumper about 10-24 inches from the ground. There are two important issues to address when installing fog lights: the first is to minimize the amount of return glare into the drivers eyes, and the other is to minimize the glare into oncoming eyes. Both of these issues must be accomplished while putting as much light as possible on the road.

These fog weather light aiming instructions are suggestions taken from common practice and the S.A.E. standard J583. Some modifications to these instructions may be necessary to minimize glare.

**Check**

Accessory Functions Checks

---

- Fog Lights function .....
- All Panels snapped into place.....
- Fog Lights.....
- Battery Terminal.....

Vehicle Function checks

---

- Check functions all switch functions

**Look For:**

---

Loose panels and switches

Visually confirm lights are straight forward

Re-torque negative battery terminal to 48 in-lb

Place fog light operation guide inside glove box.

**VEHICLE FUNCTION CHECK**

AFTER ALL PANELS, COVERS AND COMPONENTS THAT WERE REMOVED HAVE BEEN REINSTALLED, TEST THOROUGHLY ALL MECHANICAL AND ELECTRICAL COMPONENTS DISCONNECTED AND/OR REMOVED FROM THE VEHICLE DURING THE INSTALLATION OF THIS ACCESSORY