

TOYOTA TUNDRA 2007 - FENDER FLARE SET

Part Number: 00016-34720

Accessory Code: TG10



Kit Contents

Item #	Quantity Req'd.	Description
1	1	Left Front Fender Flare
2	1	Right Front Fender Flare
3	1	Left Rear Main Fender Flare
4	1	Right Rear Main Fender Flare
5	1	Hardware Bag

Hardware Bag Contents

Item #	Quantity Req'd.	Description
2	6	Black Tab
3	6	"S" Clip
4	6	Serrated Flange Screw
5	18	Hex Screw
6	2	"U" Clip
7	2	Truss Head Screw

Additional Items Required For Installation

Item #	Quantity Req'd.	Description
1	None	

Conflicts

Note:

Recommended Tools

Safety Tools	
Safety glasses	
Special Tools	
Phillips Screwdriver	
Flat Head Screwdriver	
Socket Wrench	
10mm Socket	
Installation Tools	
Nylon Tool	Standard
Wiping Cloth	Non-scratch, lint free
Grease Pencil	
Special Chemicals	
Cleaner	Isopropyl Alcohol-Based

Color Applicability/Trim Level

Accessory Color	Super White (040)	Silver Sky Metallic (1D6)	Slate Metallic (1F9)	Black (202)	Radiant Red (3L5)	Salsa Red Pearl (3Q3)	Desert Sand Mica (4Q2)	Pyrite Mica (4T3)	Timberland Mica (6T8)	Nautical Blue (8S6)	Blue Streak Mica (8T7)
Vehicle/Trim Color											
Super White (040)	x										
Silver Sky Metallic (1D6)		x									
Slate Metallic (1F9)			x								
Black (202)				x							
Radiant Red (3L5)					x						
Salsa Red Pearl (3Q3)						x					
Desert Sand Mica (4Q2)							x				
Pyrite Mica (4T3)								x			
Timberland Mica (6T8)									x		
Nautical Blue (8S6)										x	
Blue Streak Mica (8T7)											x

General Applicability

B-Cab, D-Cab, CrewMax 2007-Up

Recommended Sequence of Application

Item #	Accessory
1	Factory Mud Guards*
2	Fender Flare Set

*Mandatory

Legend

	STOP: Damage to the vehicle may occur. Do not proceed until process has been completed with.
	OPERATOR SAFETY: Use caution to avoid risk of injury.
	CAUTION: A process that must be carefully observed in order to reduce the risk of damage to the accessory/vehicle and to ensure a quality installation.
	TOOLS & EQUIPMENT: Used in Figures calls out the specific tools and equipment recommended for this process.
	REVISION MARK: This mark highlights a change in installation with respect to previous issue.

SPECIAL NOTE: Installation Sequences

After TMS and Safety mandated preparatory steps have been taken, the installation sequence is the suggested method for completing the accessory installation. In some instances the suggested sequence is written for one associate to install and in others the sequence is given as part of a team accessory installation. Unless otherwise stated in the document, the associates may perform the installation steps in any order to make the installation as efficient as possible while maintaining consistent quality.

SPECIAL NOTE: Installation Sequences

After TMS and Safety mandated preparatory steps have been taken, the installation sequence is the suggested method for completing the accessory installation. In some instances the suggested sequence is written for one associate to install and in others the sequence is given as part of a team accessory installation. Unless otherwise stated in the document, the associates may perform the installation steps in any order to make the installation as efficient as possible while maintaining consistent quality.



Fig. B1

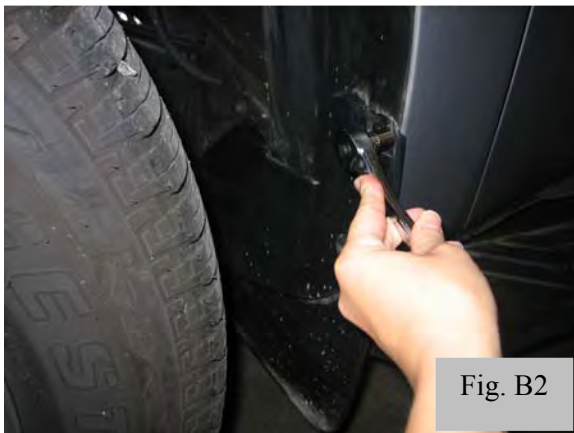


Fig. B2



Fig. B3

Section II – Installation Procedure

Care must be taken while installing this accessory to ensure damage does not occur to the vehicle. The installation of this accessory should follow approved guidelines to insure a quality installation.

These guidelines can be found in the “Accessory Installation Practices” document.

A. Installation Preparation

1. Verify that the part is for the correct vehicle model and that it fits the vehicle properly.
2. Inspect the vehicle for damage prior to installing the Fender Flares.
 - i. Paint: Prepare part surfaces per Toyota paint standards. Do not use lacquer thinner or enamel reducer as a degreaser.

B. Fastener Removal from Front

1. Using a Phillips screw driver, remove plastic fastener from front of wheel well. (Fig. B1)
Note: For the Limited version, a flat head screw driver will be needed.
2. Using a socket wrench with a 10mm socket, remove top screw from factory mud guard as shown. (Fig. B2)
3. Remove screw from underside of factory mud guard. (Fig. B3) Note: If vehicle is equipped



with running boards, running boards may need to be removed in order to access this screw.

C. Install Front Flare

1. Make sure that all installation surfaces are free of dirt and/or grease.
 - i. Use a clean, lint-free cloth and isopropyl alcohol-based cleaner.

Optional step: Spray soap/water on the truck to help position the flare for installation.

2. Hold the flare firmly on the fender. Starting with the second hole from the front of the flare, mark three clip locations with a grease pencil. (Fig. C1 and C2)

(Note: Grease pencil is an optional step.)

3. Remove flare from fender. Center a supplied Black Tab over each mark made in Step 2. (Fig. C3)
4. Slide a supplied "S" Clip over each Tab. (Fig. C4)
5. Slide a supplied "U" Clip over fender lip, aligning with forwardmost hole in fender. (Fig. C5) Note: for the Limited version, skip this step.
6. Replace flare on fender, aligning holes with holes in clips. Start three supplied Serrated-Flange Screws through three holes in flare and into "S" Clips installed in Step 4. (Fig. C6)
7. Start three supplied Hex Screws through three rear holes in flare and into factory holes in rear of wheel well. (Fig. C7 and C8)
8. Start a supplied Truss Head Screw through forward-most hole in flare and into "U" Clip installed in Step 5. (Fig. C9) Note: for the Limited version, install this screw directly into hole in fender.



Fig. C5



Fig. C6



Fig. C7



Fig. C8

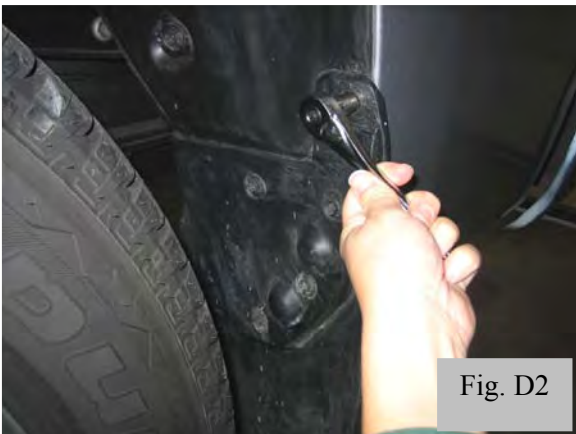
9. Ensure flare is properly positioned and tighten all screws.

D. Fastener Removal from Rear

1. Using a socket wrench with a 10mm socket, remove lower screw from front of rear wheel well as shown. (Fig. D1)
2. Remove top screw from mud flap as shown. (Fig. D2)
3. Remove screw from underside of factory mud guard. (Fig. D3)

E. Install Rear Flare

1. Make sure that all installation surfaces are free of dirt and/or grease.
 - i. Use a clean, lint-free cloth and isopropyl alcohol-based cleaner.
2. Hold the flare firmly on the fender. Start a supplied Hex Screw through each hole and flare and into hole in fender, six places. (Fig. E1 and E2)
3. Ensure Flare is properly positioned and tighten all screws.



Checklist: these points MUST be checked to insure a quality installation.

<p><u>Check:</u></p> <p><u>Accessory Function Check</u></p> <p><input type="checkbox"/> Rubber Molding</p> <p><input type="checkbox"/> Flare Fit</p> <p><input type="checkbox"/> Paint Finish</p>	<p><u>Look For:</u></p> <p>Uniform fit to truck with no gaps visible.</p> <p>No overlapping of parts over door edge openings or gas door finger groove.</p> <p>No damage, dirt, or finger marks.</p>