

TOYOTA

Tundra

2015

Power Tailgate Lock

Part Number: 00016-34092
 Accessory Code: TL1000



Conflicts

Note: Vehicles without Keyless Entry

Kit Contents

Item #	Quantity Reqd.	Description
1	1	Power Lock Assembly
2	1	Long Wire Harness
3	1	Short Wire Harness
4	2	Wire Taps
5	25	Cable Ties
6		
7		
8		

Hardware Bag Contents

Item #	Quantity Reqd.	Description
1		
2		
3		
4		
5		
6		
7		
8		

Additional Items Required For Installation

Item #	Quantity Reqd.	Description

Recommended Tools

Safety Tools	
Special Tools	
Installation Tools	
T-27 Torx (Star) Bit/Driver	
8,10 MM Wrench/Socket	
Small Flat Screwdriver	
Pliers	
Torque Wrench	
Drill / 11/32 drill bit	
Special Chemicals	
VDC Approved sealant	

Color Applicability/Trim Level

Accessory Color	Vehicle/Trim Color											

General Applicability

Models with Keyless Entry

Recommended Sequence of Application

Item #	Accessory	
1		
2		
3		

*Mandatory

Legend

STOP: Damage to the vehicle may occur. Do not proceed until process has been complied with.

OPERATOR SAFETY: Use caution to avoid risk of injury.

CAUTION: A process that must be carefully observed in order to reduce the risk of damage to the accessory/vehicle and to ensure a quality installation.

TOOLS & EQUIPMENT: Used in Figures calls out the specific tools and equipment recommended for this process.

REVISION MARK: This mark highlights a change in installation with respect to previous issue.

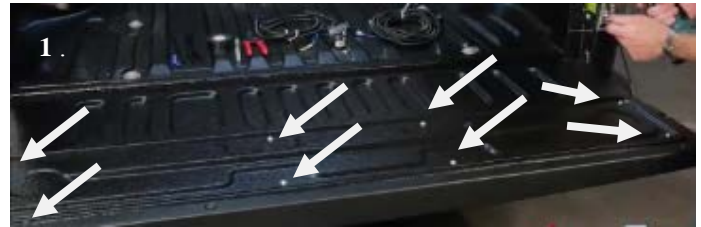
SAFETY TORQUE: This mark indicates that torque is related to safety.

SPECIAL NOTE: Installation Sequences

After TMS and Safety mandated preparatory steps have been taken, the installation sequence is the suggested method for completing the accessory installation. In some instances the suggested sequence is written for one associate to install and in others the sequence is given as part of a team accessory installation. Unless otherwise stated in the document, the associates may perform the installation steps in any order to make the installation as efficient as possible while maintaining consistent quality.

REMOVE NEGITIVE BATTERY CABLE

Step 1: Remove the T-27 Torx screws that hold the access panel on the inside of the tailgate and remove the access panel.



Step 2: Unclip and remove both latch rods. Do this by rotating the clip off the rod and lifting the rod out of the clip (You may need to use a small screw driver to rotate clip). Lay them to the side.



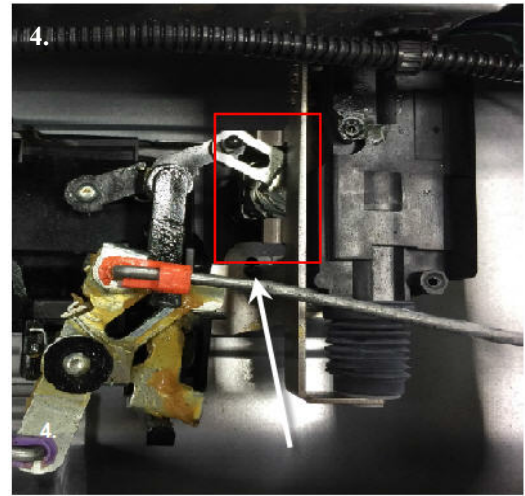
Step 3: Remove the passenger side 8mm or 10mm mounting bolt. Mark bottom of 2 OE harness clips for tailgate and drill 11/32 holes as shown in Figs. 5a & 5c. Wire tie Tailgate Lockharness to OE tailgate harness only. This will make it easy to unplug for tailgate removal.



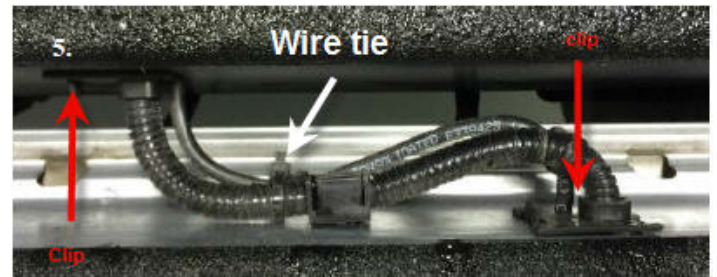
Step 4: Mount the power lock inside the tailgate to the passenger side of the handle. One hole in the bracket will align with the mounting bolt remove in the last step. The other hole will straddle a plastic post on the handle (see arrow) . Insert the handle mounting bolt into the hole and tighten.

The factory locking arm will lie between the two tabs on the power lock slide bar.

NOTE: The actuator obscures the mounting bolt, you will have to start the mounting bolt by hand and tighten it using a wrench and reattach latch rods.



Step 5: Remove 2 OE harness clips for tailgate and notch both as seen below. Wire tie Tailgate Lock harness to OE tailgate harness only. This will make it easy to unplug for tailgate removal.



Before



Fig. 5a.

Bed side of harness with bottom marked to drill hole.

Before



Fig. 5c.

Tailgate side harness with bottom marked to drill hole.

After

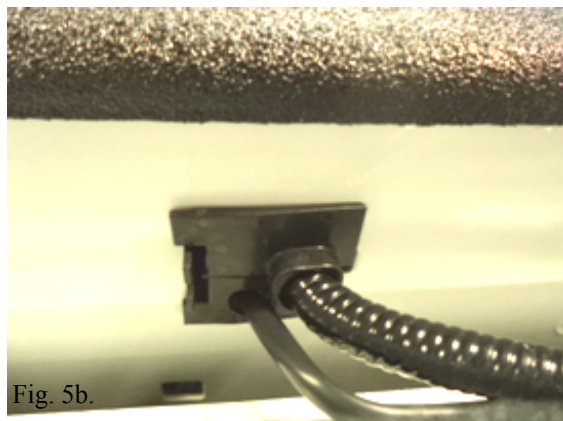


Fig. 5b.

Bed side of harness with clip installed and harness routed.

After



Fig. 5d.

Tailgate side of harness with clip installed and harness routed.

Step 6: Connect the bullet connectors to the actuator on the power lock maintaining green to green and blue to blue. Roll up and secure extra wire with a cable tie.



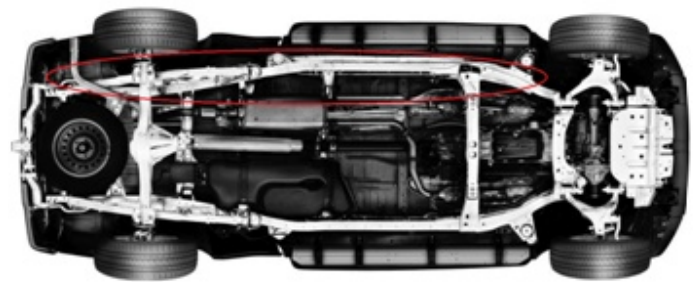
Step 7: Connect the Delphi end of the long wire harness to the Delphi end of the short harness. Secure the long wire harness under the truck bed maintaining easy access to the Delphi plug for tailgate removal. Also make sure the tailgate can be open and closed without pinching any part of the connector or the wire.

NOTE: Do not secure any part of the short harness to the actual truck or tailgate won't be able to be removed.



Step 8: Run the Long Wiring Cable down under the bed of the truck and along the passenger side frame rail, securing it about every 16 inches with the cable ties. Run the wire up to the passenger side lower corner of the fire wall.

NOTE: Make sure to secure the wire so it does not touch the exhaust or get pinched.



8.

SEE NEXT PAGE FOR HARNESS ROUTING.



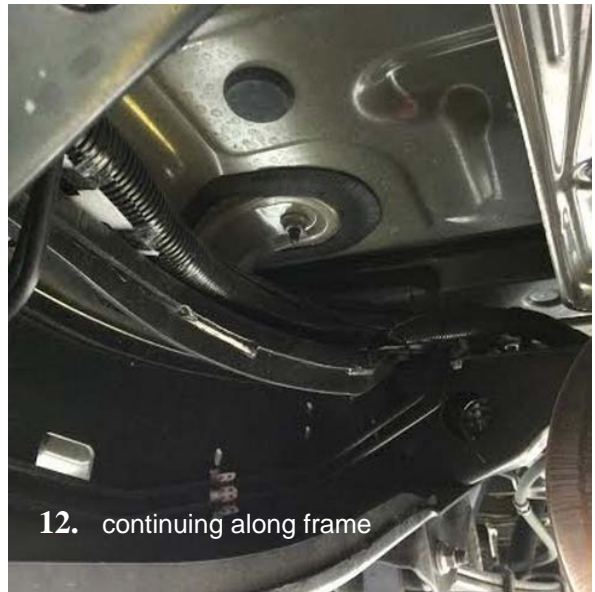
9. Lock harness at tailgate harness



10. Harness on passenger side of spare tire



11. Harness ran along frame rail above exhaust

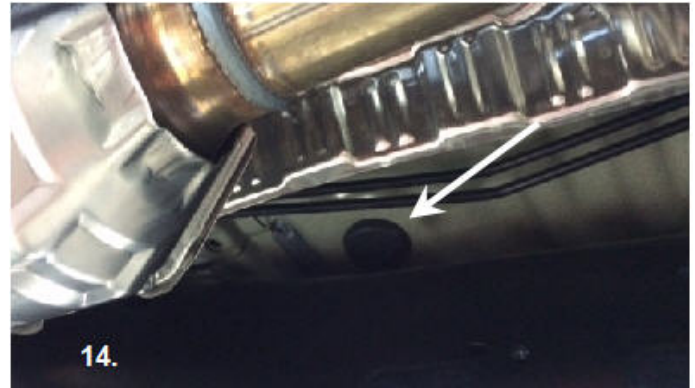


12. continuing along frame



13. ending at grommet under cab

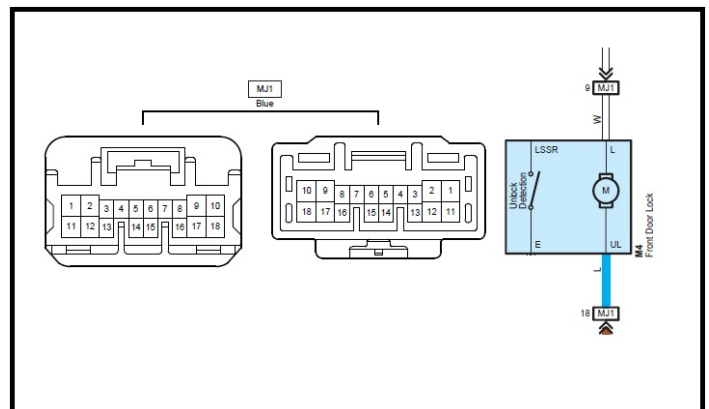
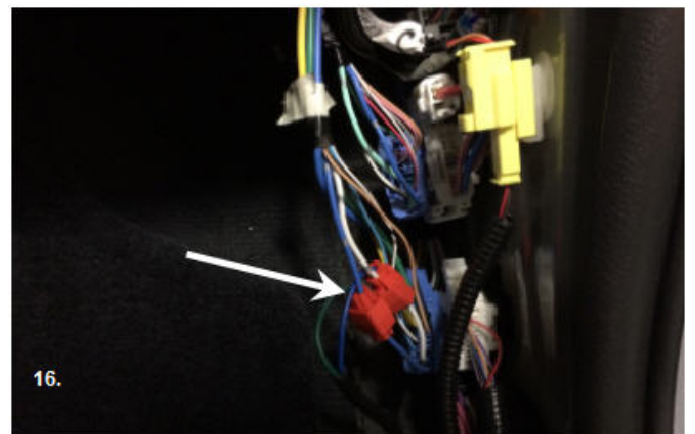
Step 9: Locate the rubber grommet for the main factory wiring harness in the lower passenger side corner of the fire wall. Cut a small slit in the upper part of the grommet. Snake all available long wiring cable through the slit into the cab of the truck. Seal with VDC approved sealant.



Step 10: Remove the passenger's side kick panel. Start by removing the nut that holds the kick panel on. Gently pull the panel towards you. be carefull not to break any of the plastic.




Step 11: Locate the terminal marked MJ1. This is the bottom blue connector. Splice the Blue wire of the long wire harness to the White wire pin 9. And the Green wire of the power lock to the Blue wire pin 18 using the Quick Splice Connectors. (Instructions for connectors are on next page)



To use quick splice connectors:

1. Snap the connector channel onto un-stripped factory wire.
2. Insert un-stripped wire from the long wire harness into the connector inside channel until it hits the stop.
3. Use pliers to cinch down the metal connector tab. Do this by holding the pliers perpendicular to the wires and squeeze the metal tab down into the plastic connector until it is flush with the top of the plastic insulator.
4. Close the plastic hinged top cover until latched. Bundle harness as shown.

 Reinstall negative battery terminal and torque to 48" lbs.

Step 12: The power lock should lock and unlock the tailgate whenever the passenger door is locked or unlocked with the remote or door switch. When unlocking with the remote press the Unlock button TWICE.

NOTE: The tailgate still can be locked and unlock with the factory key.

Troubleshooting Note: If the power lock functions opposite of the doors locks, switch the wires at the bullet connectors. Connect the blue to green and green to blue.

Step 13: If the power lock functions properly reinstall all removed panels.

