

TOYOTA

CAMRY LE

2015

Grille Overlay

Part Number: 00016-32058

Accessory Code: BG4000



Conflicts

Fits LE, XLE Models Only

Color Applicability/Trim Level

Kit Contents

Item #	Quantity Req'd.	Description
1	1	Bumper Grille Overlay
1	1	Hardware Bag

Hardware Bag Contents

Item #	Quantity Req'd.	Description
1	2	3M Adhesive Promoter Ampules

Additional Items Required For Installation

Item #	Quantity Req'd.	Description

Recommended Tools

Safety Tools	
Special Tools	
Installation Tools	
Lint Free Cloth	
Painters Tape	
Felt Pressing block or Equivalent	
Special Chemicals	
Alcohol/Water 50/50	

Vehicle Trim Color / Accessory Color	00016-32058-10	00016-32058-05	00016-32058-03	00016-32058-20	00016-32058-30	00016-32058-02				
Celestial silver metallic	X									
Crème Brule mica		X								
Ruby flare pearl			X							
Blizzard pearl				X						
Super white					X					
Midnight black Metallic						X				

Legend

STOP: Damage to the vehicle may occur. Do not proceed until process has been complied with.

OPERATOR SAFETY: Use caution to avoid risk of injury.

CAUTION: A process that must be carefully observed in order to reduce the risk of damage to the accessory/vehicle and to ensure a quality installation.

TOOLS & EQUIPMENT: Used in Figures calls out the specific tools and equipment recommended for this process.

REVISION MARK: This mark highlights a change in installation with respect to previous issue.

SAFETY TORQUE: This mark indicates that torque is related to safety.

SPECIAL NOTE: Installation Sequences

After TMS and Safety mandated preparatory steps have been taken, the installation sequence is the suggested method for completing the accessory installation. In some instances the suggested sequence is written for one associate to install and in others the sequence is given as part of a team accessory installation. Unless otherwise stated in the document, the associates may perform the installation steps in any order to make the installation as efficient as possible while maintaining consistent quality.

mix



1.

- Overlay Bumper Grille
- Lint Free Cloth
- Alcohol / Water 50 /50 Mix
- Painters Tape
- 2 3M Adhesive Promoters



2.

Clean area with Alcohol / Water mix prior to grille overlay installation.

Inspect part and vehicle for damage or paint defects. **Insure vehicle surface temp is a minimum of 60 degrees.**



3A.

Apply 1/2" wide bed of promoter in all areas shown above.

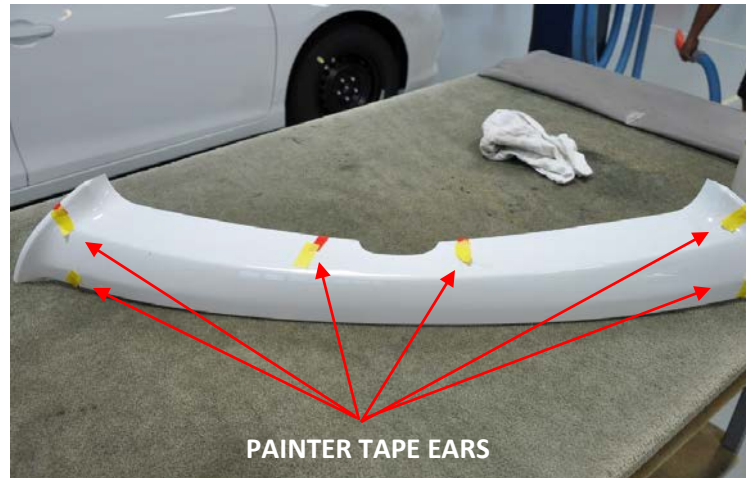


3B.

Let dry at least 30 seconds or until promoter flashes off to a dry "milky" appearance.



4. Completely remove red liner from center long strip of tape as listed above.



5B. Peel 1-2" off liner from tape ends and tape with painters tape on opposite side as listed above.

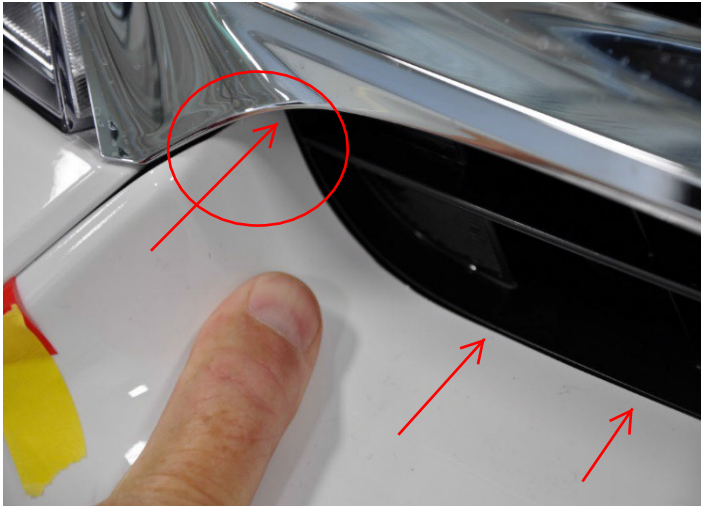


5A. Peel 1-2" off liner from tape ends and tape with painters tape on opposite side as listed above.



6.

1. Align the overlay to the center by putting the overlay emblem cut out under the emblem and back flush with the grille. Keep overlay at the angle that prevents center long strip from making contact with the bumper.
2. After overlay is centered and pushed back tight against the factory grille, concentrate on lining up top corners first.



7. Be sure overlay is pushed back against factory grille and line up top corners keeping part tight to vehicle grill. Repeat for other side.



9. Remove liners from ends of overlay.



8. Remove liners along top edge of overlay, **working from the center out** while keeping top edge against OE grill.



10. Remove liner from under side of overlay.



11.

Apply pressure to all taped areas with a felt block or equivalent tool that protects paint finish.

This completes the bumper grille overlay installation.