



Southeast Toyota Distributors, LLC Accessory Installation Instructions

2018 Avalon LED Illumination Package

Year & Model:	2018 Avalon
Part Number:	00016-00071
Accessory Code:	LL1010
PIO / DIO:	PIO/DIO
Business Partner:	L28

Conflicts

Note: None

General Applicability

Fits Models:	
1.	All Models

Additional Items Required For Installation

Item#	Quantity Req'd.	Description:
1	1	62217-06050
2	1	00016-00069-99

Sequence of Application

Item#	Accessory:
1	N/A
2	

*Mandatory

SPECIAL NOTE: Installation Sequences
After TMS & Safety mandated preparatory steps have been taken, the installation sequence is the suggested method for completing the accessory installation. In some instances the suggested sequence is written for one associate to install & in others the sequence is given as part of a team accessory installation. Unless otherwise stated in the document, the associates may perform the installation steps in any order to make the installation as efficient as possible while maintaining consistent quality.

Recommended Tools

Safety Items	
N/A	
Special Tools	
N/A	
Installation Tools	
Phillips Screwdriver	Right Angle Drill
Trim Removal Tool	Rivet Gun
Pliers	Tape Measure
1" Hole Saw	Torque Wrench
5/32" Drill Bit	Needle-Nosed Pliers
Drill Stop	Fish Tape
Utility Knife	10mm Socket & Ratchet
Special Chemicals	
50/50 alcohol	
VPC Approved Sealant	

Legend

	STOP: Damage to the vehicle may occur. Do not proceed until process has been complied with.
	OPERATOR SAFETY: Use caution to avoid risk of injury.
	CAUTION: A process that must be carefully observed in order to reduce the risk of damage to the accessory/vehicle and to ensure a quality installation.
	TOOLS & EQUIPMENT: Used in Figures calls out the specific tools and equipment recommended for this process.
	REVISION MARK: This mark highlights a change in installation with respect to previous issue.
	SAFETY TORQUE: This mark indicates that torque is related to safety.

TOYOTA Avalon LED Illumination Package (Interior & Exterior)

Table of Contents:

I.	Preparation.....	1
1.	Table of Contents	2
2.	Kit/Hardware Bag Contents.....	3
3.	Parts for Installation.....	4
4.	Service & Warranty Information.....	5
II.	Procedures	
1.	Vehicle Preparation & Disassembly.....	6-7
2.	Vehicle Assembly.....	8-13
3.	Trunk Light Replacement.....	14
4.	Install LED Replacement Housing.....	14
5.	Testing & Reassembly.....	15
III.	Function Verification.....	16
IV.	Block Diagram & Connectors.....	17-19
V.	Drill Template.....	20
VI.	Limited Warranty Statement.....	21-22

Kit/Hardware Bag Contents:

Item #	Quantity	Description
1.	4	Puddle Lights & Harnesses
2.	1	Control Module
3.	1	Power Harness
4.	1	Hardware Bag
5.	2	Foot-well Lights
6.	1	Foot-well Harness
7.	1	Trunk Light
8.	10	Wire Ties
9.	4	Foil Tape
10.	5	Foam Tape
11.	14	Plastic Rivets
12.	4	Black T-Taps
13.	4	Red T-Taps
14.	1	Blue T-Tap

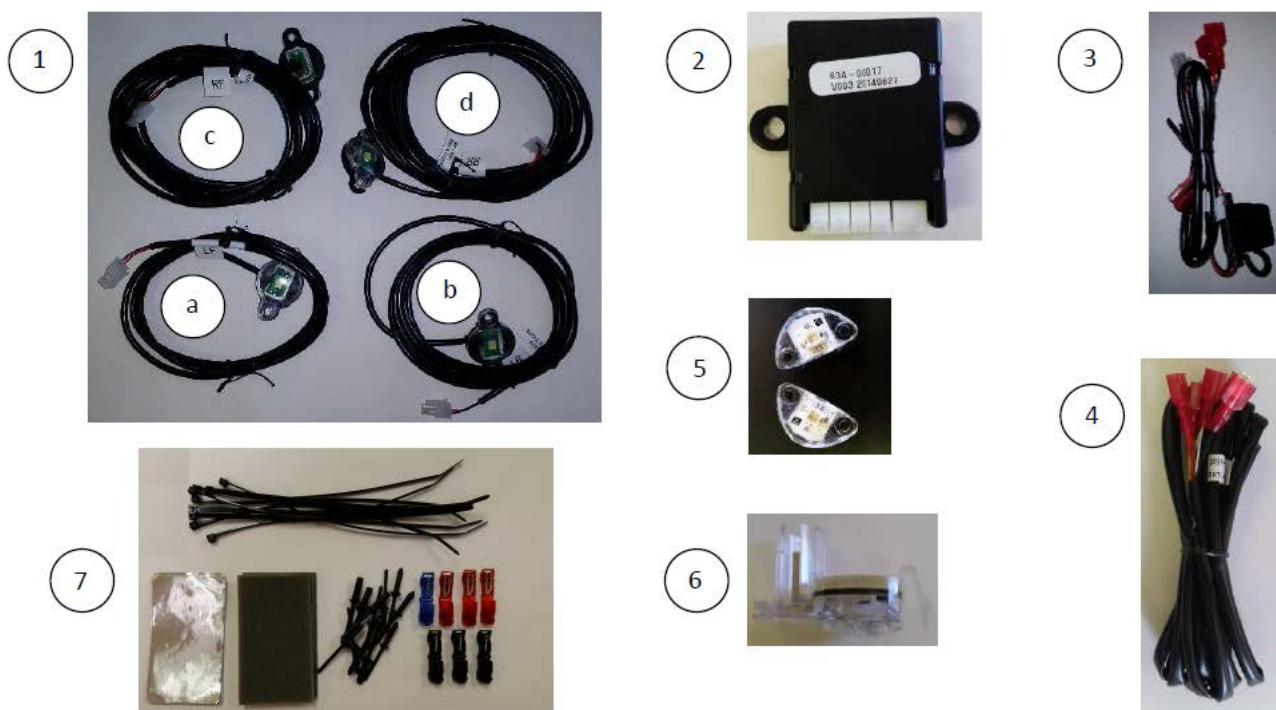
Parts for Installation:

Care must be taken when installing this accessory to ensure damage does not occur to the vehicle. The installation of this accessory should follow approved guidelines to ensure a quality installation. These guidelines can be found in the “Accessory Installation Practices” document.

This document covers such items as:

- Vehicle Protection (use of covers and blankets, cleaning chemicals, etc.).
- Safety (eye protection, re-checking torque procedure, etc.).
- Vehicle Disassembly/ Reassembly (panel removal, part storage, etc.).
- Electrical Component Disassembly/Reassembly (battery disconnection, connector removal, etc.).

Item #	Quantity	Description	Part Number
1.	4	Puddle Lights and Harnesses	00016-00071
(a)	1	LF (4.9') Puddle Light	00016-00064-05
(b)	1	LR (7.8') Puddle Light	00016-00064-06
(c)	1	RF (10.8') Puddle Light	00016-00064-07
(d)	1	RR (13.8') Puddle Light	00016-00064-08
2.	1	Control Module	00016-00064-04
3.	1	Power Harness	00016-00064-01
4.	1	Foot-well Harness	00016-00064-02
5.	2	Foot-well Lights	00016-00064-03
6.	1	Trunk Light	00016-00069-99
7.	1	Hardware Bag	N/A



CAUTION: It is advisable to disconnect the negative battery cable for 3 minutes before beginning installation, to avoid unintended air bag deployment. Note and record any anti-theft radio codes prior to disconnecting.

Service & Warranty Information:

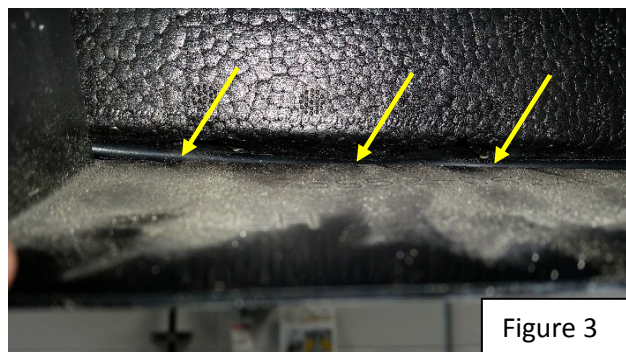
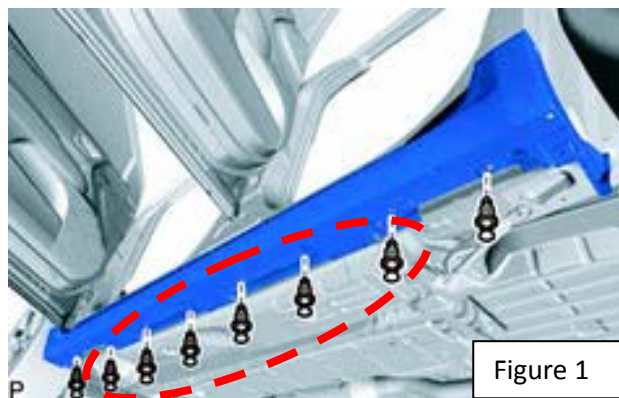
Image Key	Parts information		Warranty Information	
	Part Number	Description	Warranty Time	Labor Op. Code
NA	00016-00071	LED Illumination Pckg (Int/Ext) No Trunk	NA	NA
A	00016-00064-01	Power harness	0.3	AIP011
B	00016-00064-02	Foot well light harness	0.4	AIP021
C	00016-00064-03	Foot well LED light pod	0.2	AIP031
D	00016-00064-04	Puddle light control module	0.3	AIP041
E	00016-00064-05	Left Front puddle light and harness	1.3	AIP051
F	00016-00064-06	Left Rear puddle light and harness	1.3	AIP061
G	00016-00064-07	Right Front puddle light and harness	1.3	AIP071
H	00016-00064-08	Right Rear puddle light and harness	1.3	AIP081
Note: Use Combo codes if replacing more than one puddle light. A for additional 0.3 per light. A- adds 0.3 for two lights, AA- adds 0.6 for three lights, AAA- adds 0.9 for three lights				
N/A	00016-00069-99	Trunk LED – NOT IN KIT (Stand-alone)	0.2	AIP091

Labor times include consideration for diagnosis and Administration time

If you are a dealer located outside of the Southeast Region, please contact the SET Accessory Warranty Department at (888) 851-2722 or email Accessory.Warranty@SETToyota.com for claim payment instructions.

Image:



**VEHICLE PREPERATION:**

1. Remove the 6 center clips along each side of the lower rocker covers. Figure 1.
2. Measure drill locations for all four light pods. They should be centered in the rocker tab below each door and 2" in from the inside edge Figure 2. **Templates are provided on last page of document, align front corner on rocker tab.**
3. Using the 1" hole saw with a 1/4" stop, drill center hole.
4. Temporarily align puddle light. Using the 5/32" drill bit, drill the 2 mounting holes.



NOTE: Arrow on puddle light lens must face out, away from vehicle.

5. Thread appropriate puddle light harness through corresponding 1" hole and secure in place with plastic rivets.
6. Route rear harnesses forward along the inside of the plastic rocker trim to just past the front puddle lights. Tuck harnesses back behind foam the entire length. Figure 3.
7. Remove Drain plugs from both left and right front floor pans. Figure 4.

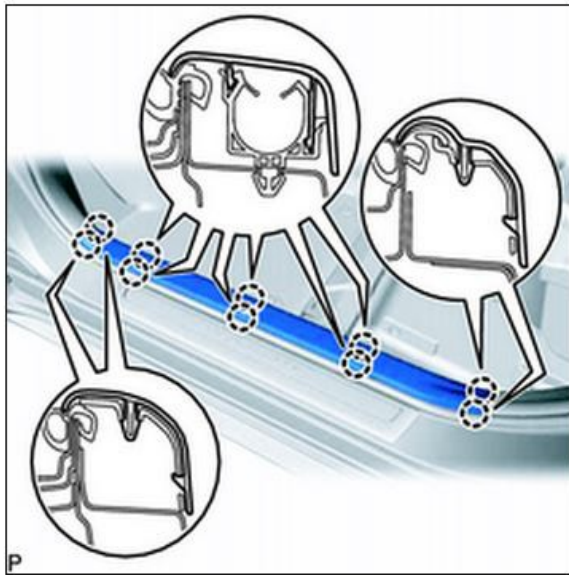


Figure 5

Remove Front Door Scuff Plates and Cowl Side Trim

8. Disengage the 10 claws and remove the front door scuff plate, LH. Figure 5.

9. Remove the clip. Disengage the two clips and remove the cowl side trim sub-assembly, LH. Figure 6.

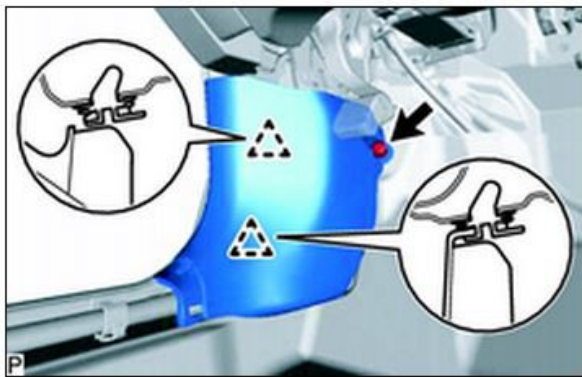


Figure 6

10. Repeat for RH side.

11. Using a sharp blade, cut an 'X' in the middle of each drain plug in order to route harnesses through and into the vehicle.



Figure 7



Figure 8



Figure 9



Figure 10

Vehicle Assembly:

12. Lift carpet to gain access to the drain holes and route puddle light harnesses up and into the vehicle. Figure 7.
13. Re-install drain plugs, with both front and rear harnesses threaded through plugs.
14. Secure front and rear harnesses together with a wire tie, just to the outside of the pinch weld. Figure 8.
15. Route harnesses from lower rockers to drain plugs. Figure 9.
16. Seal harnesses to drain plugs using VPC approved sealant. Make sure to work sealant completely around and in between both wires for a water tight seal. Figure 9.
17. Route harnesses toward the threshold and tape to threshold using foam tape. Figure 10.



Figure 11

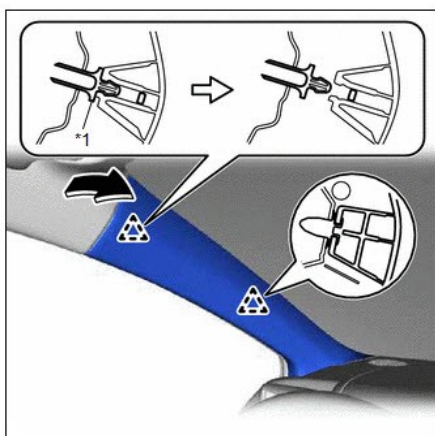


Figure 12

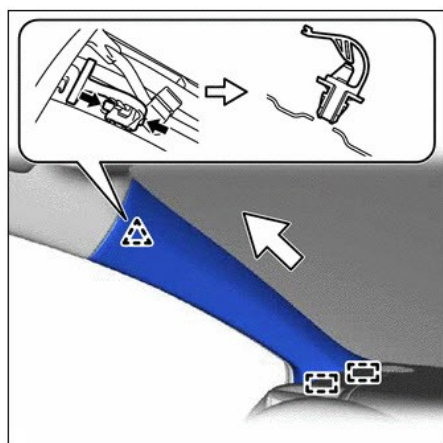


Figure 13

18. Remove the forward most, white clip, at the threshold and wire tie harnesses forward to the factory harness. Figure 11.
19. Repeat for passenger side harnesses and route under the carpet at the upper side of the factory foam.
20. Secure harnesses to factory harness above pedals using wire ties.
21. Route driver side harnesses in the same fashion to the driver side kick panel.
22. Remove Front Pillar Garnish (LH). Figure 12.
 - (a) Pull the upper part of the garnish toward the inside of the cabin and disengage the garnish from the base of the 2 clips.

Text in Illustration

*1	Front Pillar Garnish Clip
----	---------------------------

HINT:

Let the front pillar garnish LH hang from the front pillar garnish clip.

- (b) While pushing the tabs of the front pillar garnish clip as shown in the illustration, disengage the front pillar garnish clip.

Text in Illustration

*a	Protective Tape
*b	90°

- (c) Remove the front upper garnish clip.

This clip CAN NOT be reused. DESTROY and DISPOSE of clip. See figure 13.

NOTE: Install a new A-Pillar garnish upper clip when replacing garnish at end of installation. A- Pillar clip 62217-06050 is not provided in the kit. This item must be ordered separately.



NOTICE: Do not apply excessive force using a tool.



Figure 14

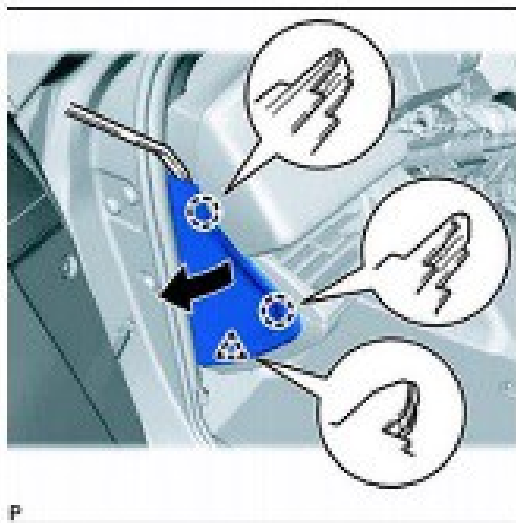


Figure 15

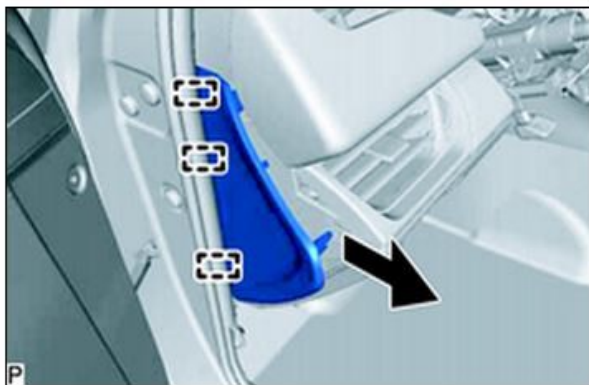
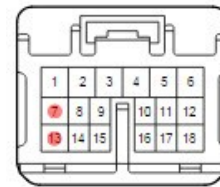


Figure 16

23. Drop the fused end of the power harness from the lower corner of the A-pillar down towards the driver's kick panel, securing in existing wire locations.

NOTE: All connectors are shown from the pin side.

24. Using a black T-tap connect the **Red** power wire to the Light Green wire in **PIN 13** of the **DN1** connector in the A-pillar.
Figure 14.

**DN1**

25. Using a black T-tap connect the **Black** ground wire to the Gray wire in **PIN 7** of the DN1 connector.
Figure 14.

26. Remove Instrument Side Panel LH

- (a) Using a molding remover, disengage the 2 claws and clip as shown in Figure 15.
- (b) Disengage the 3 guides and remove the instrument side panel LH as shown in Figure 16.

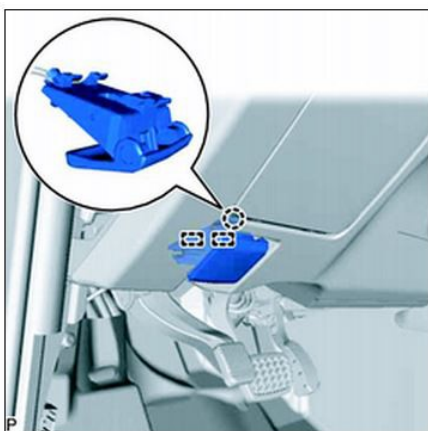


Figure 17

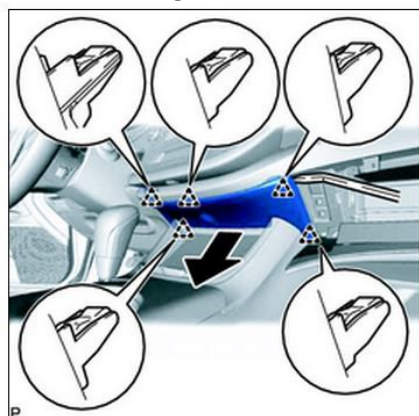


Figure 18

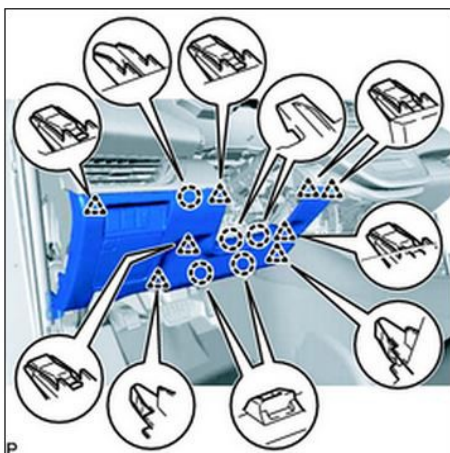


Figure 19



Figure 20



Remove Lower No. 1 Instrument Panel Finish Assembly

27. Disengage the claw and 2 guides to disconnect the hood lock control lever assembly. Figure 17.



Illustration

Note: Place red hang tag on instrument panel sub assembly **OR** hood release cable when removing hood latch cable from hood latch release lever. See Illustration.

Red Tag required for PIO only.

Tag is not part of the kit contents.

28. Disengage the 2 most left Clips on the Lower Center Information Finish Panel. Figure 18.

29. Remove lower No. 1 Instrument panel finish assembly.

- (a) Remove the bolt and screw. Figure 19.

- (b) Disengage the 5 claws and 8 clips. Figure 20.

- (c) Disconnect each connector and remove lower No. 1 Instrument panel finish assembly.



Figure 21

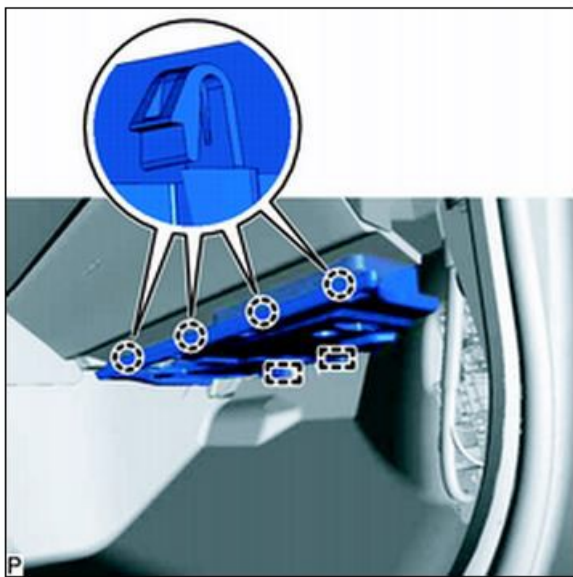


Figure 22

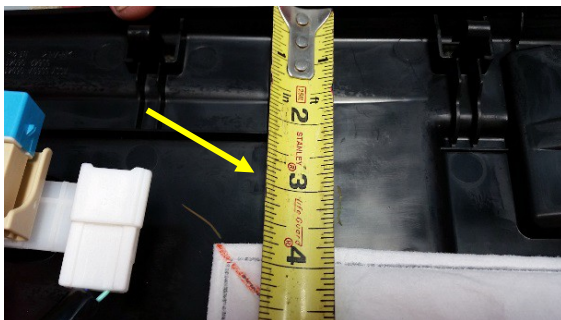


Figure 23

- 30. Mark where Driver side foot-well light will be mounted, 1 ¼" from rear edge. Drill one 5/8" hole where the connector will be located. Figure 21.
- 31. Align light with flat side facing seats and using 5/32" drill bit, drill two mounting holes. Mount light pod using included plastic rivets
- 32. Remove the No.2 Instrument panel under cover sub assembly in passenger side foot-well. Figure 22.
 - a. Disengage the 4 claws and 2 guides.
 - b. Disconnect each connector and remove the No. 2 instrument panel under cover sub- assembly.
- 33. Mark where Passenger side foot- well light will be mounted. Measure 2 ¾" down from rib as shown in image. Drill one 5/8" hole where the connector will be located. Figure 23.
- 34. Align light with flat side facing seats and drill (2) 5/32" holes for mounting. Mount light pod using included rivets.
- 35. Connect the **Red** wire from the foot-well harness to the red wire from the puddle light control module. Connect the **White** wire from the foot-well harness to the white wire from the puddle light module.

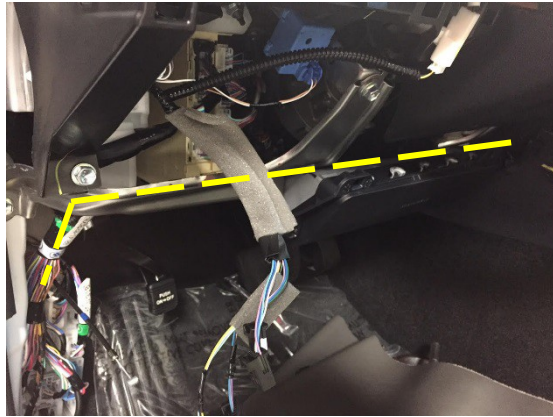


Figure 24

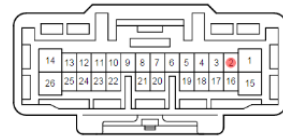


Figure 25

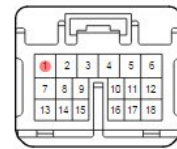


Figure 26

36. Secure harnesses to factory harness under steering column using wire ties routing down to the driver side kick panel. Figure 24.
37. Using a Red T-tap, connect the **Yellow** wire to the Pink wire in **Pin 2** of the blue **DA2** connector. Figure 25.

**DA2**

38. Using a Blue T-tap, connect the **Black** wire to the White/Black wire in **Pin 1** of the **GD1** connector. Figure 25.

**GD1**

39. Route long side of foot-well power harness, above pedals and secure to factory wiring harness. Fish over to passenger side foot-well and connect to corresponding light. Reinstall lower garnish with attached light.
40. Route additional connector to driver side foot-well light. Connect and wire tie in place.
41. Connect all harnesses and mount the control module to the factory harnesses, in front of the JB connector with wire tie. Figure 26.

NOTE: Prior to buttoning up, please verify the emergency brake function. Confirm the wires do not interfere with the operation

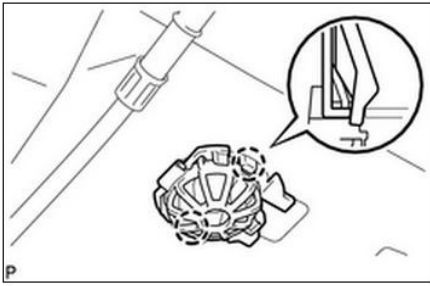


Figure 27



Figure 28

REMOVAL**Trunk Light Replacement**

1. REMOVE NO.1
LUGGAGE
COMPARTMENT
LIGHT ASSEMBLY
Figure 27.

- (a) Disengage the 2 claws.
- (b) Disconnect the
connector and remove
the No. 1 luggage
compartment light
assembly

2. **Install LED Replacement
Housing:**

Figure 28.

- (a) Connect the connector to
trunk light.
 - (b) Insert tab end and
click into place.
3. Print Warranty Statement &
place in glove box, DIO Only.

Testing and Reassembly:

1. REINSTALL ALL TRIM PANELS IN THE ORDER OF REMOVAL TAKING SPECIAL CARE TO MAKE SURE ALL HARNESSSES AND WIRING ARE PROPERLY SECURED. MAKE SURE HARNESSSES ARE NOT PINCHED OR BOUND BY TRIM PIECES.



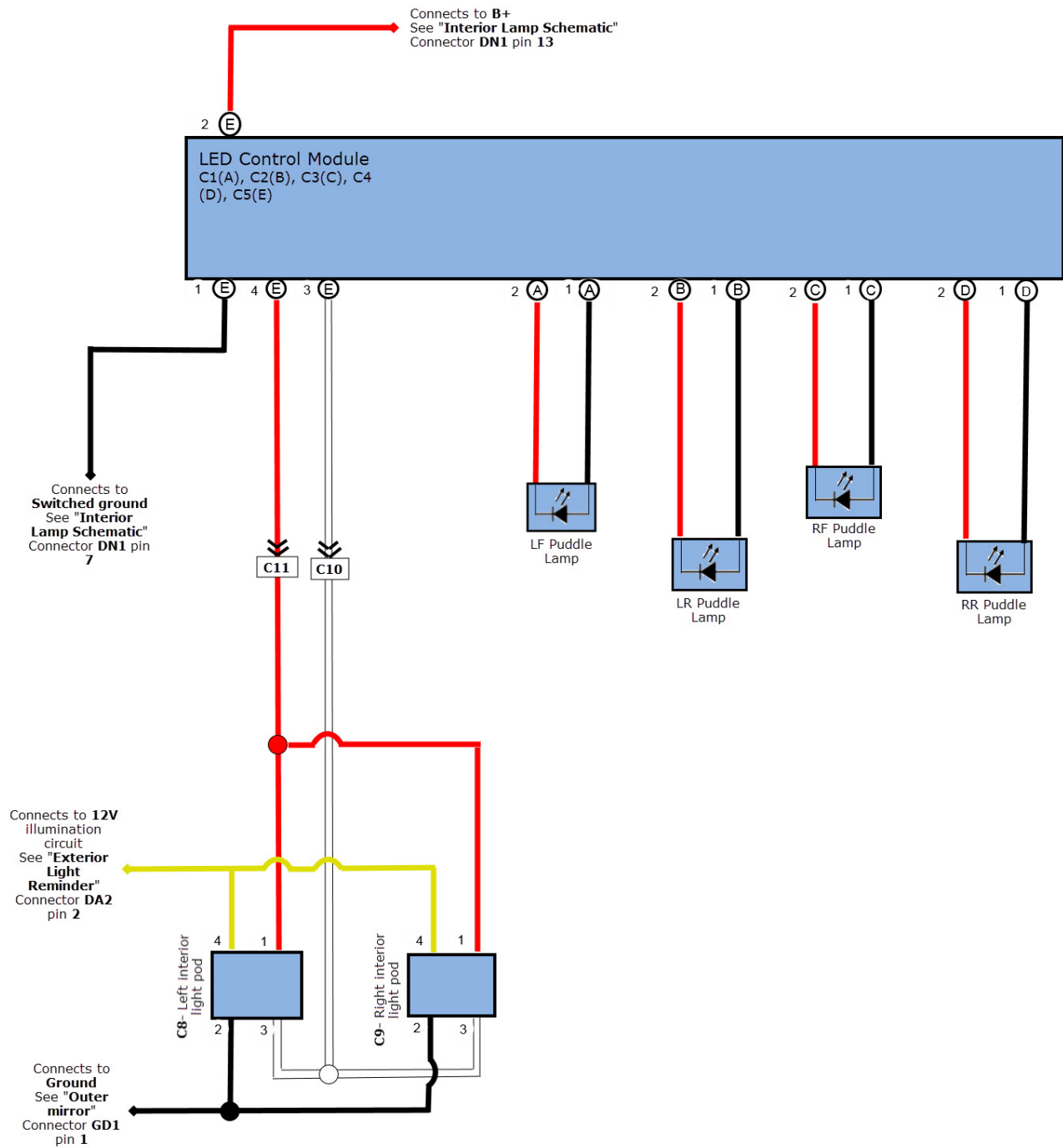
2. RECONNECT NEGATIVE BATTERY CABLE AND TORQUE TO 48 IN/LBS.

Vehicle Functions Checks:

Checklist- these points MUST be checked to ensure a quality installation

<u>Check:</u>	<u>Look For:</u>
✓ Full Light Condition	Close all doors and lock vehicle do foot-well and puddle lights go out? Unlock vehicle, do foot-well lights come on full brightness? Do puddle lights come on?
✓ Low Light Condition	Start vehicle, do puddle lights go out? Do the foot-well lights dim to low level?
✓ Ignition	Verify that the vehicle will crank?
✓ SRS Warning Light	Confirm SRS warning light illuminates for approximately 6 seconds with the ignition on, and then goes out.
✓ Warranty Statement	Place in glove box (DIO only).

Block Diagram Avalon Lighting Package



Connector C-1 thru C-4



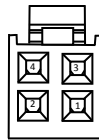
BLK to LF ext light	Off	12V	C1	Off	12V	Red to LF ext light
	On	8.6V		On	8.6V	
BLK to LR ext light	Off	7.6V	C2	Off	7.6V	Red to LR ext light
	On	5.6V		On	5.6V	
BLK to RF ext light	Off	12V	C3	Off	12V	Red to RF ext light
	On	8.6V		On	8.6V	
BLK to RR ext light	Off	7.6V	C4	Off	7.6V	Red to RR ext light
	On	5.6V		On	5.6V	

C1, C2, C3, and C4 are all individual LEDs.

Can be tested with Diode mode on DVOM.

Red to **Red**, **Black** to **Black** = 2.5V

Red to **Black**, **Black** to **Red** = O.L.



Connector C5

BLK to swt ground	Int Imp OFF	12V	C5	Int Imp OFF	12V	WHT to Int Lamp
RED to B+	Int Imp ON	0V		Int Imp ON	0V	RED to Int Lamp
	B+	12V		B+	12V	
	Voltage supply to module			From module to Int Light		

Connector C6

Pin	Wire Color	Test Reference	Proper Operation
1		Pin 1 to Ground	Approximately 0 VDC when Dome Light is ON +12 VDC when Dome Light is OFF

Connector C7

Pin	Wire Color	Test Reference	Proper Operation
1			+12 VDC

Connector C8 & C9

Pin	Wire Color	Test Reference	Proper Operation
1	Red	Pin 1 to Ground	+12 VDC
2	Black	Pin 2 to Ground	Approximately 0 VDC
3	White	Pin 3 to Ground	Approximately 0 VDC when Dome Light is ON +12 VDC when Dome Light is OFF
4	Yellow	Pin 4 to Ground	Approximately 0 VDC ignition switch OFF +12 VDC when ignition ON

Connector C10

Pin	Wire Color	Test Reference	Proper Operation
1	White	Pin 1 to Ground	Approximately 0 VDC when Dome Light is ON +12 VDC when Dome Light is OFF

Connector C11

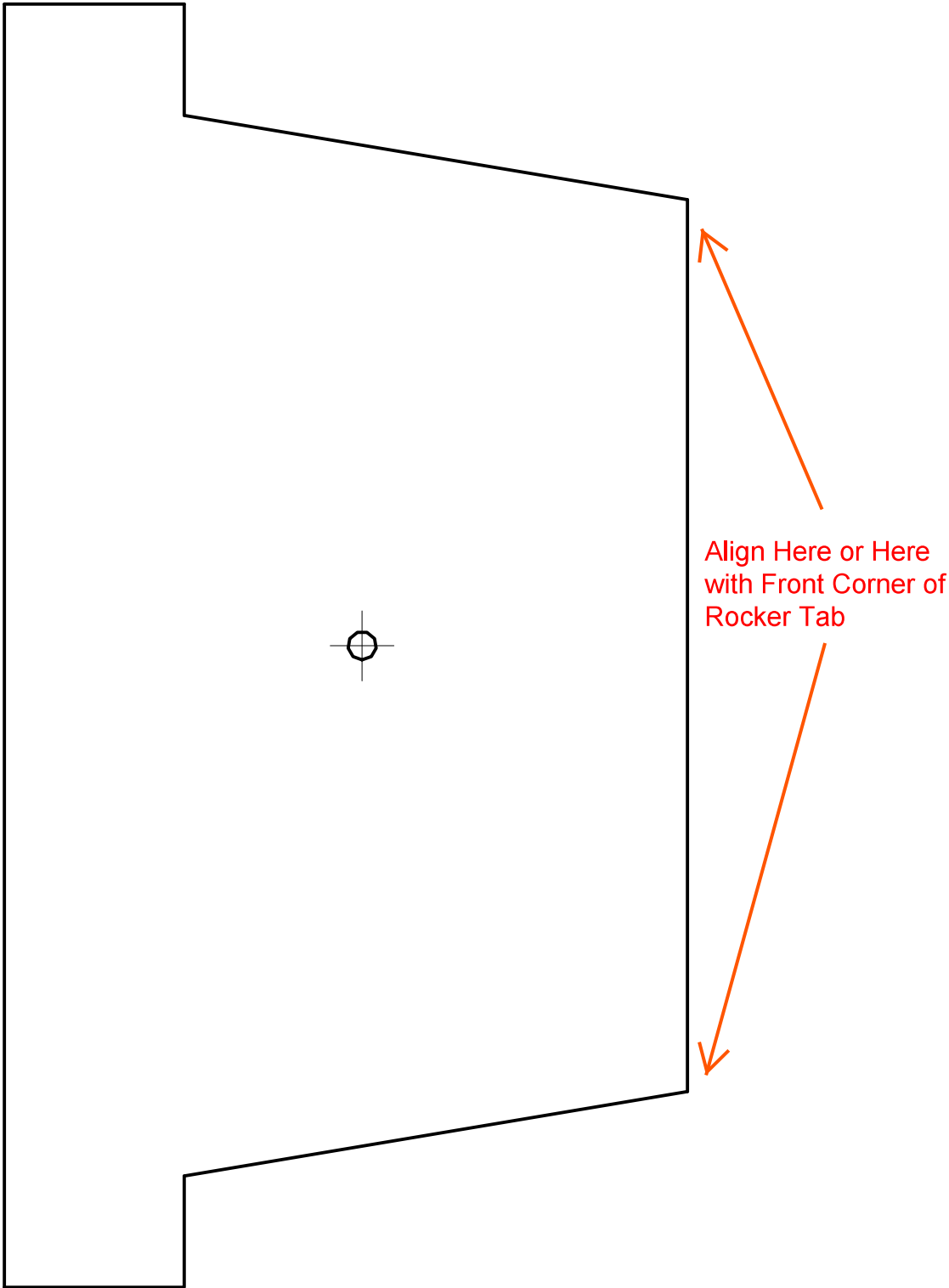
Pin	Wire Color	Test Reference	Proper Operation
1	Red	Pin 1 to Ground	+12 VDC

Connector C12

Pin	Wire Color	Test Reference	Proper Operation
1	Yellow	Pin 1 to Ground	Approximately 0 VDC ignition switch OFF +12 VDC when ignition ON

Connector C13

Pin	Wire Color	Test Reference	Proper Operation
1	Black	Pin 1 to Ground	Approximately 0 VDC



DRILL TEMPLATE

LIMITED WARRANTY – SOUTHEAST TOYOTA

SOUTHEAST TOYOTA DISTRIBUTORS, LLC ("we," "our" and "us") provides the following limited warranty on our accessories, excluding tires, ("Accessories" or "Accessory") installed on a Toyota. This limited warranty is not provided by and does not bind or provide benefit to the vehicle dealer, the manufacturer, or Toyota Motor Sales, U.S.A., Inc. This limited warranty does not apply to tires; please consult the tire manufacturer and/or its materials accompanying the vehicle for any warranty terms concerning tires. This limited warranty also does not apply to ToyoGuard Exterior Paint Sealant and ToyoGuard Interior Protector; please consult the ToyoGuard Limited Warranty Certificate for the warranty terms concerning those products.

SCOPE OF LIMITED WARRANTY:

A. Protection:

- i. **Accessories Installed by Southeast Toyota Distributors, LLC on a new Toyota vehicle.** We warrant that, for a period of 36 months or 36,000 miles, whichever occurs first, we will repair or replace (includes labor), free of charge, any defect in such an Accessory due to faulty material or workmanship, or, at our option, provide a full refund of the purchase price of the Accessory. The warranty period begins on the vehicle's In-Service Date, which is the first date the new vehicle is either delivered to an ultimate purchaser, leased, or used as a company car or demonstrator. Accessories installed by Southeast Toyota Distributors, LLC are identified on the vehicle's window sticker (Monroney Label).
- ii. **Accessories Installed by a Toyota Dealer on a Toyota vehicle.** We warrant that, for 12 months, regardless of mileage, from the date such an Accessory was installed on the vehicle or the remainder of the Toyota new vehicle warranty, whichever is longer, we will repair or replace (includes labor), free of charge, any defect in the Accessory due to faulty material or workmanship, or, at our option, provide a full refund of the purchase price of the Accessory. For a new vehicle, the warranty period begins on the vehicle's In-Service Date, which is the first date the new vehicle is either delivered to an ultimate purchaser, leased, or used as a company car or demonstrator.
- iii. **Accessories purchased from a Toyota Dealer but not installed by the Toyota Dealer.** We warrant that, for a period of 12 months, regardless of mileage, from the date the accessory was purchased, we will repair or replace (does not include labor), free of charge, any defect in the Accessory due to faulty material or workmanship, or, at our option, provide a full refund of the purchase price of the Accessory.

B. Limitation of Warranty. This limited warranty does not apply to, and we will not repair, replace, or reimburse you for: (1) wheel balancing and wheel alignments, except for one wheel balancing or alignment during the first 12 months or 12,000 miles, whichever occurs first, from the vehicle's In-Service Date, as defined above, (2) abrasions or dents, whatever their cause, and any failure or damage resulting directly or indirectly from accidents, collisions, impacts from foreign objects, fire, theft, larceny, explosion, malicious mischief, vandalism, civil commotion, riots, war, or any other similar causes, (3) any failure or damage resulting directly or indirectly from lightning, windstorms, hail, water, floods, subfreezing temperatures, airborne chemicals, tree sap, dust, salt, and any other environmental conditions or similar causes, (4) any failure or damage caused by: (a) a failure of any part, other than the Accessory, (b) any misuse, abuse, improper towing, negligence or lack of maintenance of the vehicle or Accessory, (c) the alteration, modification or repair of the Accessory by anyone other than persons expressly authorized by us to perform such alteration, modification or repair, or (d) the use of the vehicle for commercial purposes, competitive driving or racing, (5) any failure or damage, if the Accessory has not been installed according to instructions, (6) any failure or damage occurring outside of Canada, the United States of America, its territories or possessions, (7) except to the extent required by the state whose laws govern this limited warranty, any consequential, secondary, or unreasonable costs that may be suffered as a result of the need to repair or replace the Accessory, including without limitation any loss of use of the vehicle, road service, towing, storage charges, inconvenience, loss of wages and/or income, additional expense incurred, loss of transportation, rental car expense, or any derivative damage to persons or things other than the Accessory, including other parts of the vehicle, or (8) liability for damage to property or for injury to or death of any person, arising out of the operation, maintenance or use of your vehicle whether or not related to the covered Accessory.

C. Exclusive Remedy. If there is a valid claim under this limited warranty for a defect due to faulty material or workmanship in the Accessory, we will, at our option, either: (i) repair, (ii) replace or (iii) provide a full refund of the purchase price of the Accessory. We have no other obligations under this limited warranty. Refunds will be made to the vehicle owner. If the vehicle is leased, the refund will be made to the leasing company.

HOW TO MAKE A CLAIM: In the event of a warranty claim, please contact the nearest Toyota dealer to arrange for repairs. The dealership must receive our prior authorization before making repairs covered by this limited warranty. The dealer will contact Southeast Toyota Distributors, LLC at 1-888-851-2722, select option #5 (Warranty Department), then option #4 (Repairs), for instructions on processing a warranty claim, if they are not already familiar with the process. If you have any questions or concerns regarding repairs covered by this limited warranty, please contact our **Customer Assistance Hotline at 1-800-301-6859**.

OUR DISPUTE RESOLUTION PROGRAM: Your satisfaction is our highest priority. In keeping with that focus, in the event that an issue arises related to this Limited Warranty, we invite you to call our Customer Assistance Hotline at 1-800-301-6859 to discuss it. In most cases, we expect that a satisfactory resolution of your issue can be reached through engagement with that Department. If our Customer Loyalty Department is unable to resolve your issue to your satisfaction, we offer a dispute resolution program administered by the National Center for Dispute Settlement (NCDS) ("the Program"). The purpose of the Program is to resolve disputes in an informal setting before an impartial arbitrator. The Program is free of charge to you (although you must bear the cost of any expert witness or attorney you elect to employ). You are required to complete the Program before exercising rights or seeking remedies under the federal Magnuson-Moss Warranty Act, 15 U.S.C. § 2301 et seq. ("the Act"). If you choose to seek remedies that are not created by the Act, you are not required to use the Program before pursuing such remedies – although the Program is still available to you to resolve the dispute. When utilizing the Program, you will need to provide (a) the vehicle identification number of your vehicle, (b) the identity of your selling and servicing dealerships, (c) the mileage on your vehicle at relevant times, (d) the date and nature of any relevant repairs, (e) legible copies of repair orders and other relevant documents, (f) a summary of the unresolved issue and the requested action, and (g) your contact information. In most cases, the dispute resolution process under the Program will be completed within forty (40) days of your submission of your request and will consist of steps such as an initial eligibility determination, an opportunity for you and us to submit information in writing relating to your claim, an oral hearing, and a decision from the arbitrator. A decision will be binding on you only if you choose to accept it. You may submit a request to NCDS by telephone at their toll free number: (877)-276-8848 or in writing at P.O. Box 463196, Mt. Clemens, MI 48046. You may obtain additional information regarding the Program at www.ncdsusa.org. In the event that the NCDS does not exist or no longer handles disputes for us at the time that you seek to submit a request, you may contact our **Customer Assistance Hotline at 1-800-301-6859** to obtain current information about our dispute resolution programs.

GENERAL LIMITATION OF WARRANTY: THIS LIMITED WARRANTY IS IN LIEU OF ALL OTHER EXPRESS WARRANTIES OR LIABILITIES. IN NO EVENT SHALL WE BE LIABLE FOR ANY CONSEQUENTIAL OR INCIDENTAL DAMAGES FOR BREACH OF THIS OR ANY OTHER WARRANTY. SOME STATES DO NOT ALLOW THE EXCLUSIONS OR LIMITATIONS OF INCIDENTAL OR CONSEQUENTIAL DAMAGES, SO THE ABOVE INFORMATION OR EXCLUSION MAY NOT APPLY. NO EXPRESS WARRANTY OF FITNESS OR MERCHANTABILITY IS GRANTED BY THIS LIMITED WARRANTY. THERE ARE NO WARRANTIES WHICH EXTEND BEYOND THOSE DESCRIBED IN THIS DOCUMENT. ANY IMPLIED WARRANTIES, INCLUDING THE IMPLIED WARRANTY OF MERCHANTABILITY OR FITNESS FOR A PARTICULAR PURPOSE, WHICH MAY BE APPLICABLE BY OPERATION OF LAW SHALL BE LIMITED TO THE PERIOD OF THIS WRITTEN LIMITED WARRANTY. SOME STATES DO NOT ALLOW LIMITATIONS ON HOW LONG AN IMPLIED WARRANTY LASTS, SO THE ABOVE LIMITATIONS MAY NOT APPLY. THIS LIMITED WARRANTY PROVIDES SPECIFIC LEGAL RIGHTS, AND THERE MAY BE OTHER RIGHTS WHICH VARY FROM STATE TO STATE. ANY ACTION FOR BREACH OF ANY WARRANTY HEREUNDER, INCLUDING ANY IMPLIED WARRANTY OF MERCHANTABILITY, MUST BE BROUGHT WITHIN A PERIOD NOT EXCEEDING 12 MONTHS AFTER EXPIRATION OF THIS LIMITED WARRANTY. THE REMEDIES SPECIFIED HEREIN AND THOSE SPECIFIED BY APPLICABLE LAW ARE THE ONLY REMEDIES AVAILABLE. WE ASSUME NO OTHER OBLIGATION OR RESPONSIBILITY WITH REGARD TO THE ACCESSORY. WE NEITHER ASSUME, NOR AUTHORIZE ANYONE TO ASSUME FOR US, ANY ADDITIONAL LIABILITY IN CONNECTION HERewith.

GENERAL: This limited warranty describes the complete and exclusive rights that result from the purchase of Accessories. No oral representations or statements may be relied upon. This limited warranty may not be amended or modified, and additional rights may not be granted, unless in a written statement signed by one of our officers. This limited warranty shall be governed by the laws of the state where the vehicle is purchased, excluding laws concerning conflicts of law. We may delegate the performance of our duties and obligations and assign our rights and benefits hereunder. For inquiries regarding this limited warranty, we can be contacted directly at **Customer Assistance Hotline at 1-800-301-6859**, or by mail to: **Southeast Toyota Distributors, LLC, Attention: Customer Loyalty Department, 100 Jim Moran Boulevard, Deerfield Beach, Florida 33442.**